

Home Stretch 40 Mil Membrane

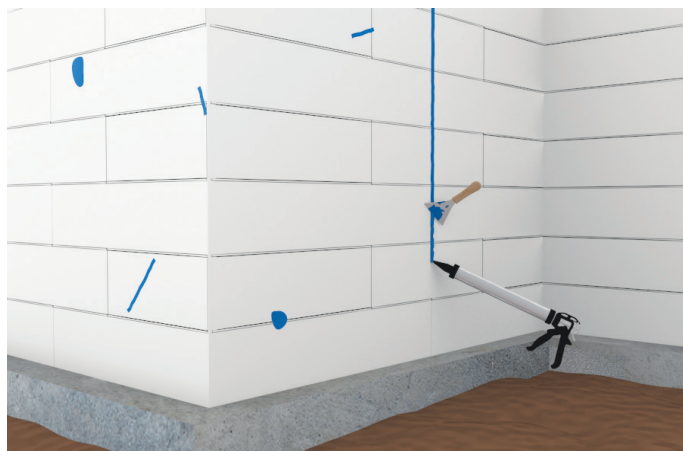
STEP 1

Apply Home Stretch 40 Mil Membrane waterproofing system onto vertical insulated concrete form (ICF) walls, cast-in-place concrete walls, concrete masonry (CMU) walls, or precast concrete foundation walls.



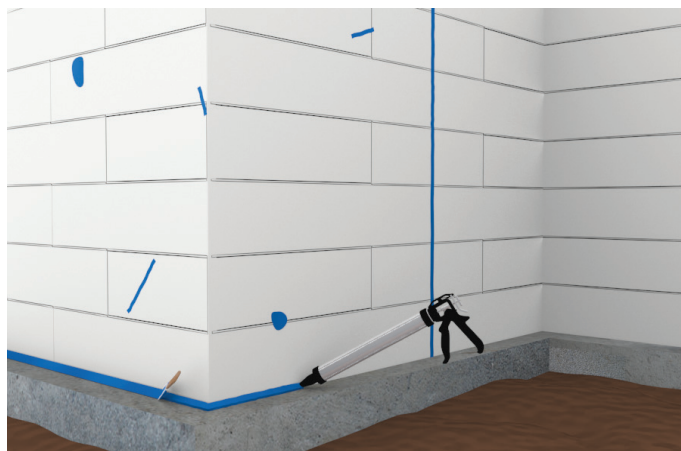
STEP 2

The substrate foundation and walls must be clean; dry; clear of dirt, debris, frost, smears, and concrete form release agents; and be allowed to cure a minimum three (3) days prior to the application of the Home Stretch 40 Mil Membrane waterproofing system.



STEP 3

Minor voids in the foundation wall, as well as wall control joints, are to be filled and sealed with Blue Barrier Gap Filler to provide a level plane for the application of the Home Stretch 40 Mil Membrane waterproofing material. Allow the Blue Barrier Gap Filler a minimum two (2) hours to skin over before covering with the Home Stretch 40 Mil Membrane, adding additional time for lower ambient and surface temperatures.



STEP 4A

If Home Stretch 40 Mil Membrane is continued at the base of the foundation wall onto the footer, then where the vertical wall interfaces the footer shall be prepared with a 3/4-inch, 45 degree angle tooled cant of Blue Barrier Gap Filler. Allow a minimum two (2) hours for the Blue Barrier Gap Filler to cure prior to covering it up. Do NOT prime with Polyguard 650 WB underneath Blue Barrier Gap Filler applications. Do NOT use wood or fiber cant strips in substitution for the Blue Barrier Gap Filler.



STEP 4B

If Home Stretch 40 Mil Membrane is continued at the base of the foundation wall onto the footer, then apply the Polyguard 650 WB at a rate of 350-400 SF / gal by lamb's wool roller or by brush to a cleaned, dust-free ICF substrate surface to provide a tacky adhesive surface for the Home Stretch 40 Mil Membrane installation. It is important to note that the Polyguard 650 WB **MUST** be tacky to the touch on the substrate wall prior to the Home Stretch 40 Mil Membrane installation.



STEP 4C

If Home Stretch 40 Mil Membrane is continued at the base of the foundation wall onto the footer, then apply a 12-inch wide strip of Home Stretch Detail Tape over the Blue Barrier Gap filler cant. Prior to installing the Home Stretch Detail Tape, apply Polyguard 650 WB at a rate of 350 – 400 SF / gal by lamb's wool roller or by brush to a cleaned, dust-free substrate surface to provide a tacky adhesive surface for the Home Stretch Detail Tape to bond to the wall and the horizontal face of the footer. Again, it is important to note that the Polyguard 650 WB **MUST** be tacky to the touch on the substrate wall prior to the Home Stretch Detail Tape installation. Center the Home Stretch Detail Tape along the joint's axis; and press, or roll, firmly to achieve a complete seal.



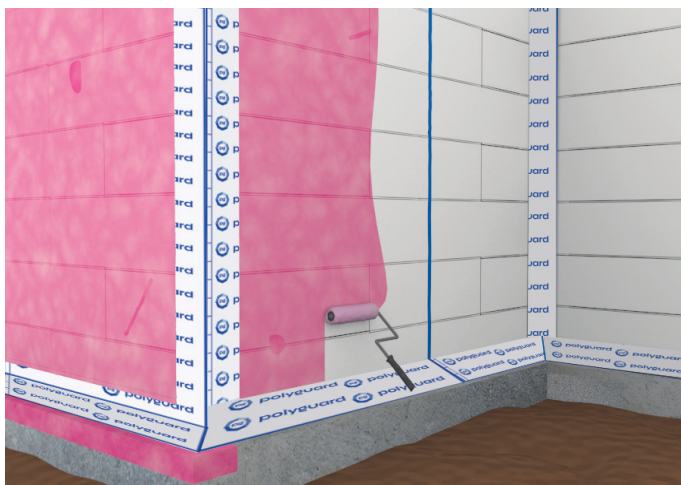
STEP 5A

All inside and outside corners shall be treated with a 12-inch wide strip of Home Stretch Detail Tape. First apply Polyguard 650 WB at a rate of 350 – 400 SF / gal by lamb's wool roller or by brush to a cleaned, dust-free substrate surface to provide a tacky adhesive surface for the Home Stretch Detail Tape to bond to the wall. Again, it is important to note that the Polyguard 650 WB MUST be tacky to the touch on the substrate wall prior to the Home Stretch Detail Tape installation.



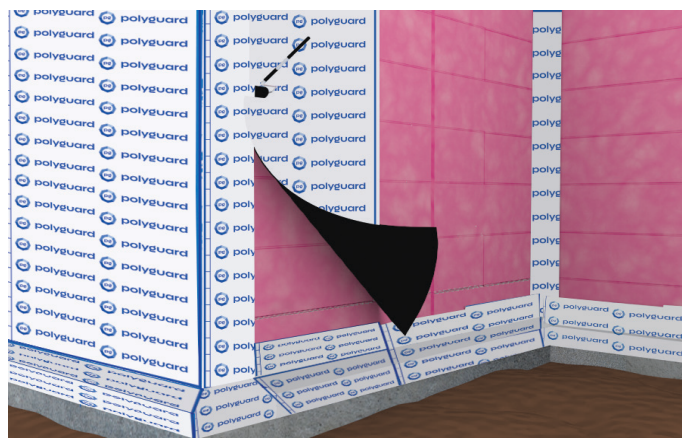
STEP 5B

Center the Home Stretch Detail Tape along the joint's axis; and press, or roll, firmly to achieve a complete seal. As an alternative to the Home Stretch Detail Tape at all inside and outside corners, a 3/4-inch, 45 degree angle tooled cant of Blue Barrier Gap Filler is acceptable. Allow a minimum two (2) hours for the Blue Barrier Gap Filler to cure prior to covering it up. Do NOT prime with Polyguard 650 WB underneath Blue Barrier Gap Filler applications. Do NOT use wood or fiber cant strips in substitution for the Blue Barrier Gap Filler.



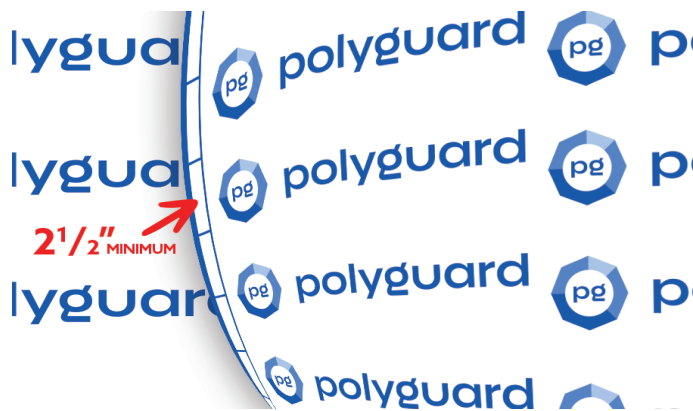
STEP 6

Apply the Polyguard 650 WB at a rate of 350 – 400 SF / gal by lamb's wool roller or by brush to a cleaned, dust-free ICF substrate surface to provide a tacky adhesive surface for the Home Stretch 40 Mil Membrane installation. It is important to note that the Polyguard 650 WB **MUST** be tacky to the touch on the substrate wall prior to the Home Stretch Peel 'N Stick Membrane installation. Re-prime all areas of the ICF substrate wall where the Home Stretch 40 Mil Membrane material is not applied within the same working day as the Polyguard 650 WB.



STEP 7

Align and apply the Home Stretch 40 Mil Membrane vertically in sections of 8 feet in length or less, starting from the lower foundation wall base and rising to the top using the 6-inch overlap, shingling down on each ply of membrane. On walls higher than 8 feet, apply two or more sections of Home Stretch 40 Mil Membrane with the upper section overlapping the lower. Use heavy hand pressure while smoothing out the Home Stretch 40 Mil Membrane surface as its applied; and use a hard, narrow, hand-held roller to firmly adhere the material for a complete bond as it is placed on the vertical surfaces. When continuing the Home Stretch 40 Mil Membrane materials above grade to reach the top of foundation wall, apply Polyguard UV40 or metal flashing over all of the Home Stretch 40 Mil Membrane above grade, with its lower edge a minimum of four (4) inches below grade, to protect the installed Home Stretch 40 Mil Membrane from UV exposure beyond its 30 day limit.



STEP 8

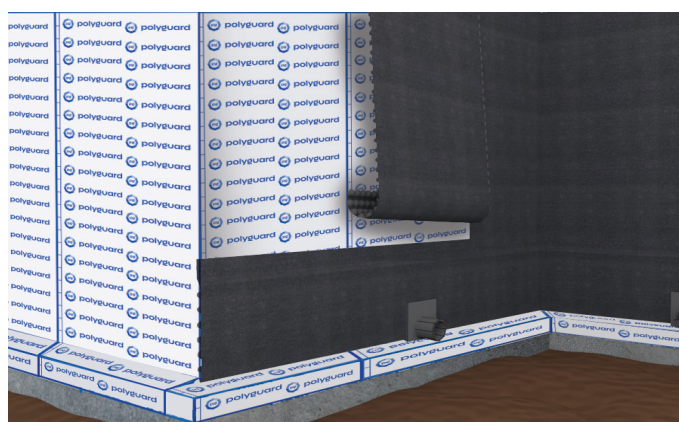
Home Stretch 40 Mil Membrane side laps shall be 2-1/2 inches minimum. Staggered end laps shall be 6 inches minimum.



STEP 9

All Home Stretch 40 Mil Membrane wall terminations shall receive a termination bar (supplied by others). Firmly press the termination edge with a hard, narrow, hand-held roller; install the termination bar with fasteners, and then cover the membrane edge and termination bar with a tooled bead of Blue Barrier Gap Filler as a termination protection.

- Inadequately lapped seams and damaged areas shall be cleaned, primed, and patched with Home Stretch Detail Tape, extending the repair coverage at least 6 inches in each direction beyond the defect. Seal all Home Stretch Detail Tape edges with 30 mils tooled of Blue Barrier Gap Filler.
- Fishmouths and/or severe wrinkles shall be slit, flaps overlapped, and repaired with a Home Stretch Detail Tape patch.
- Puncture all air blisters, expel the air, prime and cover with a Home Stretch Detail Tape patch. Seal all Home Stretch Detail Tape Tape edges with 30 mils tooled of Blue Barrier Gap Filler.
- Home Stretch 40 Mil Membrane will be adversely affected by prolonged or constant ultraviolet radiation (UV) exposure longer than 30 days. For periods of (UV) exposure greater than 30 days, remove and reapply all uncovered/exposed Home Stretch 40 Mil Membrane.



STEP 10

Install Polyguard's Totalflow and Polyflow 10 Protection and Drainage Board accessory products over the complete and continuous Home Stretch 40 Mil Membrane waterproofing system; or provide another protective board by others. Home Stretch Membrane surfaces should be dry and free of stones and dirt prior to drainboard/protection board installation.

Hold the selected drainboard / protection board in-place against the membrane by backfilling against the board in 1'-0" high sections (lifts) in a non-destructive manner, or by adhering the board directly to the membrane with Polyguard Quick Grip Adhesive. Quick Grip Adhesive is designed and approved only as a temporary hold (up to 72 hours) of the Polyflow 10 and Totalflow Drainboard materials on the vertical wall, so final backfill against the selected drainboard / protection board on the foundation wall must be completed as soon as possible in a non-destructive manner up to the maximum 72-hour time limit for the board materials to be secured in place long-term against the foundation wall. The temporary hold and release of the installed selected board from the Quick Grip Adhesive provides protection of the Home Stretch Membrane sheet waterproofing after backfill has been completed and may exert downward pressure on the board during settlement. The board will be allowed to detach from the membrane, by the Quick Grip Adhesive release, and slip downwards to relieve stress off the Home Stretch Membrane.