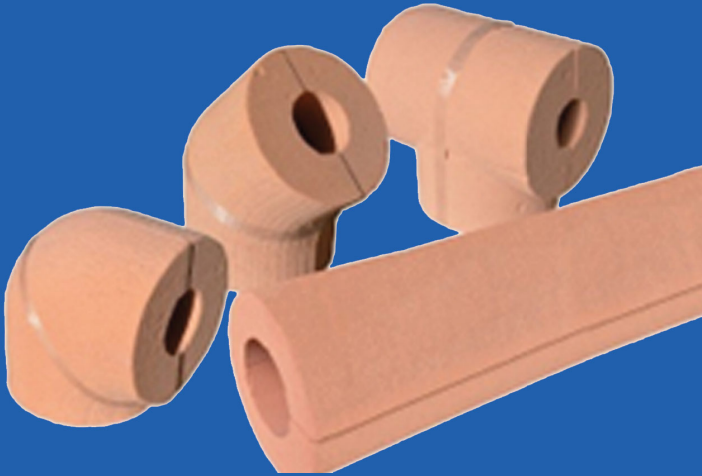


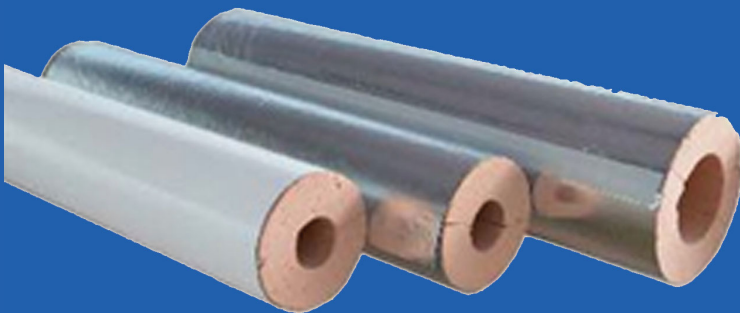
Polyguard PolyPhen[®] 2500

Product Overview



The Polyguard PolyPhen[®] phenolic insulation is one component in our PolyPhen[®] system including a range of rigid foam insulation densities designed for piping systems, tanks, vessels and ductwork in commercial and industrial applications.

The PolyPhen[®] phenolic rigid foam insulation products, have thermal conductivities ranging from 0.17 - .24 Btu in/hr ft² and can be used to insulate surfaces operating within the temperature range of -290°F to +250°F (-180°C to +120°C), and is manufactured to provide optimum thermal performance and flame resistance, low smoke emissions, environmental safety, and efficient cost.



2.5 Lb. Density, Pink/Red



8.3 Ft. Long, 3 Ft. Wide, 2.5 Ft. High, 750 Brd. Ft. in Billet.



Quality closed cell, efficient insulation



Accurately fabricated, tight fitting insulation



Firmly butted and sealed offset joints



Vapor stops as needed



Continuous, sealed ZeroPerm vapor barrier



Mechanical and weather cladding

Meets the requirements of ASTM C 1126 type III products

| Properties | Standard | Units | Value & Type | | | |
|--------------------------------------------------------------------------------------------------|----------------|-------------------------------------|--------------|--------------|--------------|--------------|
| | | | 2.5 LB | 3.75 LB | 5 LB | 7.5 LB |
| COLOR | | | Orange | Yellow/White | Pink/Red | Green |
| NOMINAL DENSITY | ASTM D-1622 | lb/ft ² | 2.5 | 3.75 | 5 | 7.5 |
| CLOSED CELL CONTENT | ASTM D-2856 | Minimum % | 95 | 95 | 95 | 95 |
| TEMPERATURE LIMITS | | °F | -290 to +250 | -290 to +250 | -290 to +250 | -290 to +250 |
| THERMAL CONDUCTIVITY | ASTM C-518 | Btu-in./hr-ft ² -°F@75°F | 0.17 | 0.19 | 0.22 | 0.24 |
| SPECIFIC HEAT | | Btu/lb.°F | 0.45 | 0.45 | 0.45 | 0.45 |
| COMPRESSIVE STRENGTH Parallel to Rise | ASTM D-1621 | lb/in ² | 30 | 50 | 90 | 150 |
| | ASTM D-1621 | lb/in ² | 25 | 40 | 70 | 110 |
| TENSILE STRENGTH Parallel to Rise | ASTM D-1623 | lb/in ² | 23 | 45 | 80 | 100 |
| | ASTM D-1623 | lb/in ² | 21 | 35 | 60 | 90 |
| THERMAL AND HUMID AGING -40 " 6°F Ambient RH 158 " 4°F 97, " 3% RH 257 " 4°F Ambient RH | ASTM D-2126 | % lin chg | #2 | #2 | #2 | #2 |
| | ASTM D-2127 | % lin chg | #2 | #2 | #2 | #2 |
| | ASTM D-2128 | % lin chg | #2 | #2 | #2 | #2 |
| WATER VAPOR PERMEABILITY | ASTM E-96 | perm inch | #4 | #4 | #4 | #4 |
| WATER ABSORPTION | ASTM C-209 | % by volume | 0.6% | 0.6% | 0.6% | 0.6% |
| FLAME/SMOKE | ASTM E-84 | | | | | |
| Insulation only (2.5# tested 2-26-2016) | up to 4 inches | flame spread | 25/50 | #25 | #25 | #25 |
| | up to 4 inches | smoked developed | 0.0 | #50 | #50 | #50 |

| Part # | Bun Density (LB.) | Bun Color | Bun Length (FT.) | Bun Width (FT.) | Bun Height (FT.) | BRD. FT. in Bun |
|---------------|-------------------|--------------|------------------|-----------------|------------------|-----------------|
| POLYPHEN 2500 | 2.5 | Orange | 8.3 | 3 | 2.5 | 750 |
| POLYPHEN 3750 | 3.75 | Yellow/White | 8.3 | 3 | 2.5 | 750 |
| POLYPHEN 5000 | 5.0 | Pink/Red | 8.3 | 3 | 2.5 | 750 |
| POLYPHEN 7500 | 7.5 | Green | 8.3 | 3 | 2.3 | 700 |

contact us



3801 S. IH-45
Ennis, TX 75119

Phone : 214-515-5000

Web : www.polyguard.com

Social : @polyguardproducts

