

BACKER ROD AND POLYGUARD DETAIL  
SEALANT PW APPLIED AND TOOLED IN JOINT

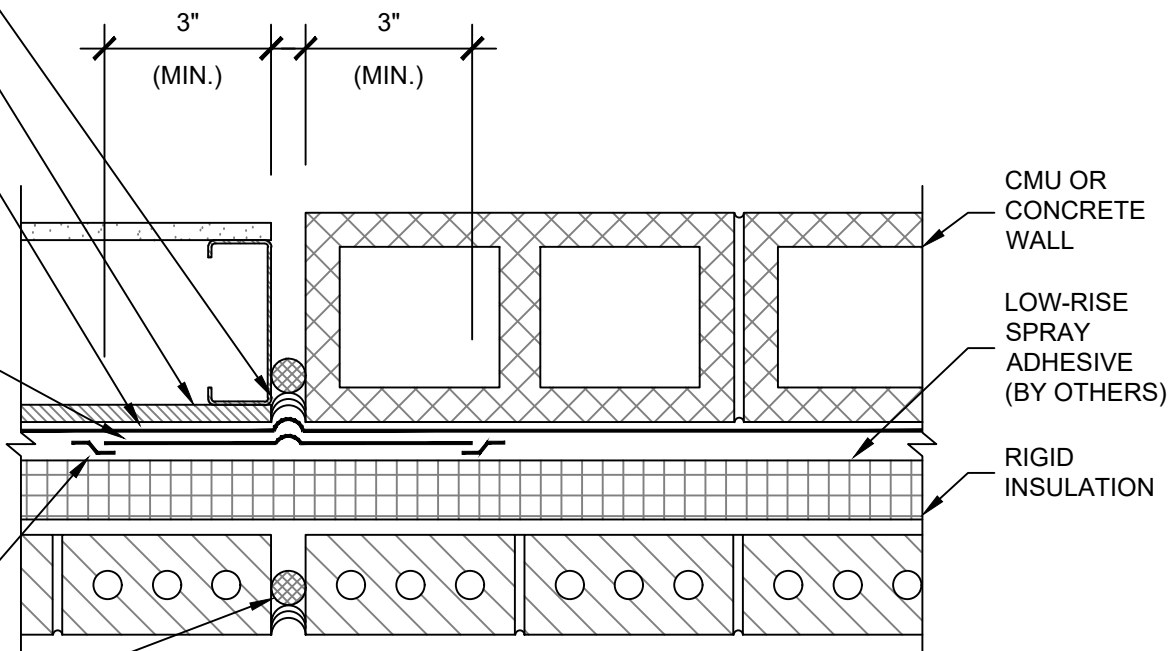
GYPSUM SHEATHING

POLYGUARD NON-PERMEABLE AIRLOK  
SHEET 200 BU SERIES AIR BARRIER  
MEMBRANE APPLIED BEFORE (AS SHOWN)  
OR AFTER SELECTED FLASHING MEMBRANE

POLYGUARD AIRLOK SHEET 200 BU / NP SERIES  
OR AIRLOK SHEET 400 NP SERIES APPLIED  
OVER POLYGUARD 650 LT LIQUID ADHESIVE OR  
CALIFORNIA SEALANT APPLIED AT A RATE OF  
250 - 300 SF / GAL, OR OVER 650 WB LIQUID  
ADHESIVE APPLIED AT A RATE OF 350 - 400 SF /  
GAL. EXTEND SELECTED FLASHING MEMBRANE  
A MINIMUM 3" ONTO EACH SIDE OF JOINT.  
APPLY SELECTED FLASHING MATERIAL EITHER  
BEFORE OR AFTER (AS SHOWN) SELECTED  
POLYGUARD AIR BARRIER MEMBRANE.

COVER EXPOSED SHEET FLASHING MEMBRANE  
EDGES WITH POLYGUARD DETAIL SEALANT PW  
APPLIED AND TOOLED TO MINIMUM 25 MILS

BACKER ROD AND SEALANT (BY OTHERS)



10

ASBNP

PLAN @ FRAMED BACKING WALL / MASONRY VENEER - TRANSITION JOINT

Polyguard Products, Inc.  
P.O. Box 755 - Ennis, TX 75120  
Phone: 214-515-5000  
Web Site - [www.polyguard.com](http://www.polyguard.com)

©POLYGUARD PRODUCTS, INC.  
MATERIAL SEPARATED FOR CLARITY

The information provided is based on data and knowledge considered to be true and accurate and is offered for the users' consideration, investigation and verification, but we do not warrant the results to be obtained. Please read all data sheets, statements, recommendations or suggestions in conjunction with our conditions of sale, which apply to all goods supplied by us.	NOT TO SCALE
	EFFECTIVE DATE: 03/06/2023
	SUPERCEDES: 01/01/2023