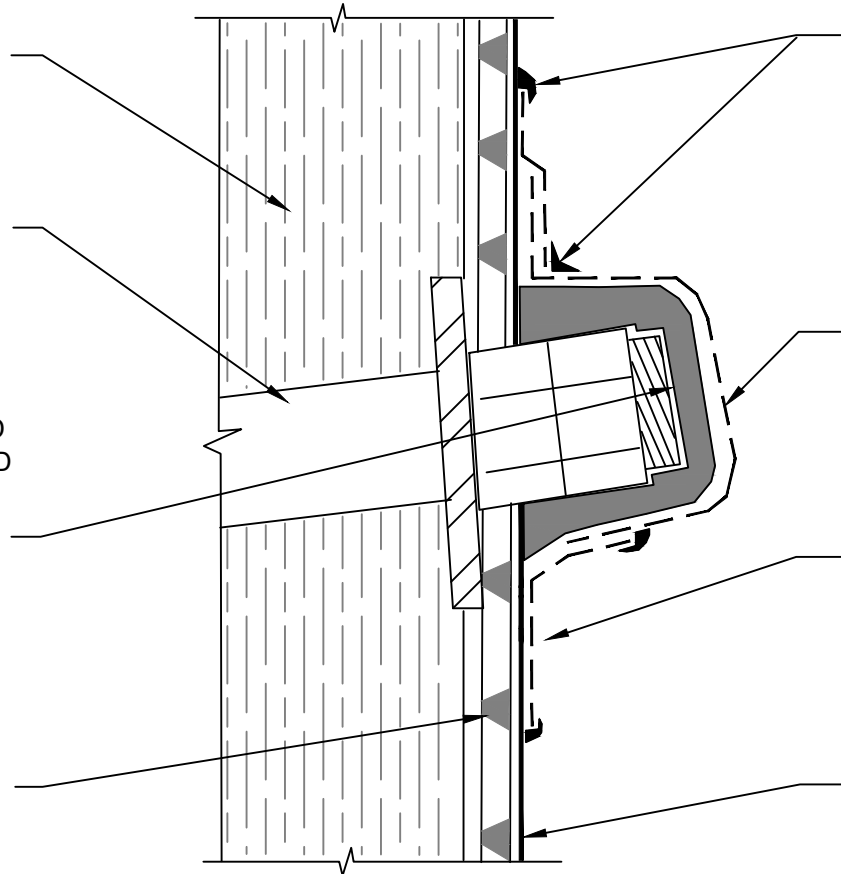


APPROVED RETENTION SYSTEM  
LAGGING SHOWN - BY OTHERS

SOIL NAIL - BY OTHERS

90 MILS MINIMUM OF POLYGUARD  
LM-95 APPLIED OVER POLYGUARD  
BLINDSIDE MEMBRANE AND SOIL  
NAIL HEAD - PREPARE FABRIC  
WITH POLYGUARD 650 LT LIQUID  
ADHESIVE OR POLYGUARD  
CALIFORNIA SEALANT AT A RATE  
OF 50 - 75 SF/GAL

POLYGUARD POLYFLOW 15 /15P  
MOLDED SHEET DRAIN FABRIC  
TOWARD RETENTION SYSTEM



POLYGUARD DETAIL SEALANT PW OR  
POLYGUARD LM-95 APPLIED OVER  
TERMINATION OF POLYGUARD FABRIC  
TAPE AND ONTO POLYGUARD BLINDSIDE  
MEMBRANE - PREPARE FABRIC WITH  
POLYGUARD 650 LT LIQUID ADHESIVE OR  
POLYGUARD CALIFORNIA SEALANT AT A  
RATE OF 50 - 75 SF/GAL

POLYGUARD FABRIC TAPE APPLIED OVER  
POLYGUARD BLINDSIDE MEMBRANE AND  
POLYGUARD LM-95 - PREPARE FABRIC  
WITH POLYGUARD 650 LT LIQUID  
ADHESIVE OR POLYGUARD CALIFORNIA  
SEALANT AT A RATE OF 50 - 75 SF/GAL

POLYGUARD FABRIC TAPE APPLIED ONTO  
POLYGUARD FABRIC TAPE AND ONTO  
POLYGUARD BLINDSIDE MEMBRANE  
PREPARED WITH POLYGUARD 650 LT  
LIQUID ADHESIVE OR POLYGUARD  
CALIFORNIA SEALANT AT A RATE OF 50 -  
75 SF/GAL

POLYGUARD BLINDSIDE MEMBRANE  
FABRIC TOWARD CONCRETE POUR OR  
SHOTCRETE NOT IN THE WATER TABLE -  
CONSULT POLYGUARD IF IN THE WATER  
TABLE

**BS11**

**SECTION @ TIE BACK / SOIL NAIL HEAD**

Polyguard Products, Inc.  
P.O. Box 755 - Ennis, TX 75120  
Phone: 214-515-5000  
Web Site - www.polyguard.com

©POLYGUARD PRODUCTS, INC.  
MATERIAL SEPARATED FOR CLARITY

<small>The information provided is based on data and knowledge considered to be true and accurate and is offered for the users' consideration, investigation and verification, but we do not warrant the results to be obtained. Please read all data sheets, statements, recommendations or suggestions in conjunction with our conditions of sale, which apply to all goods supplied by us.</small>	NOT TO SCALE
	EFFECTIVE DATE: 07/15/2024
	SUPERCEDES: 10/01/2022