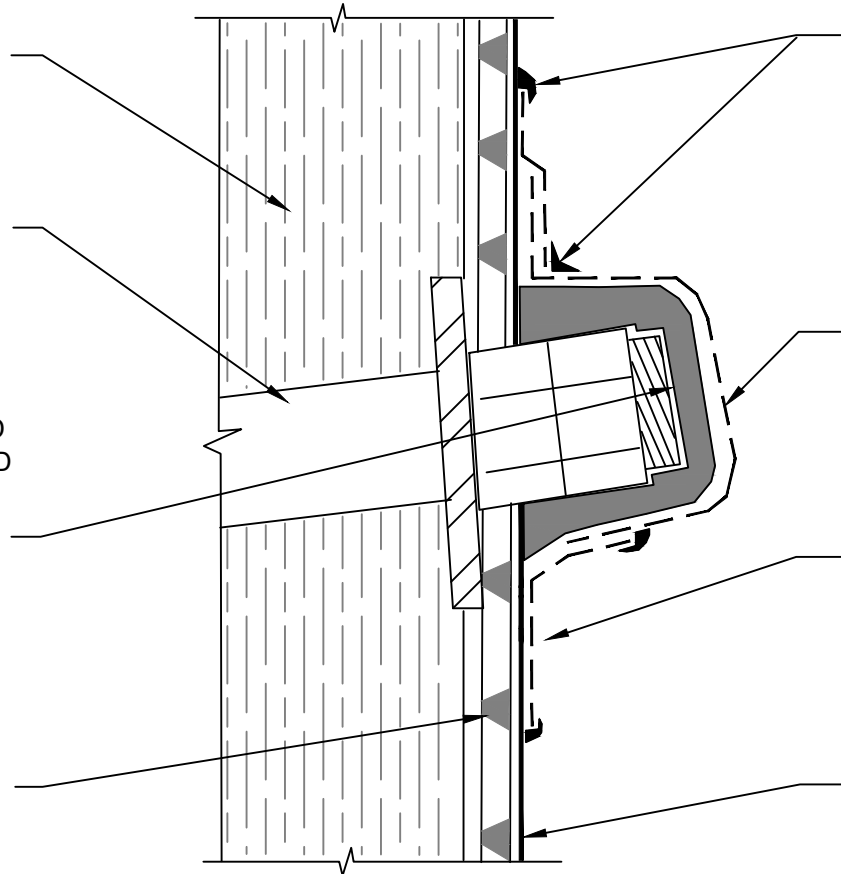


APPROVED RETENTION SYSTEM
LAGGING SHOWN - BY OTHERS

SOIL NAIL - BY OTHERS

90 MILS MINIMUM OF POLYGUARD
LM-95 APPLIED OVER POLYGUARD
BLINDSIDE MEMBRANE AND SOIL
NAIL HEAD - PREPARE FABRIC
WITH POLYGUARD 650 LT LIQUID
ADHESIVE OR POLYGUARD
CALIFORNIA SEALANT AT A RATE
OF 50 - 75 SF/GAL

POLYGUARD POLYFLOW 15 /15P
MOLDED SHEET DRAIN FABRIC
TOWARD RETENTION SYSTEM



POLYGUARD DETAIL SEALANT PW OR
POLYGUARD LM-95 APPLIED OVER
TERMINATION OF POLYGUARD FABRIC
TAPE AND ONTO POLYGUARD BLINDSIDE
MEMBRANE - PREPARE FABRIC WITH
POLYGUARD 650 LT LIQUID ADHESIVE OR
POLYGUARD CALIFORNIA SEALANT AT A
RATE OF 50 - 75 SF/GAL

POLYGUARD FABRIC TAPE APPLIED OVER
POLYGUARD BLINDSIDE MEMBRANE AND
POLYGUARD LM-95 - PREPARE FABRIC
WITH POLYGUARD 650 LT LIQUID
ADHESIVE OR POLYGUARD CALIFORNIA
SEALANT AT A RATE OF 50 - 75 SF/GAL

POLYGUARD FABRIC TAPE APPLIED ONTO
POLYGUARD FABRIC TAPE AND ONTO
POLYGUARD BLINDSIDE MEMBRANE
PREPARED WITH POLYGUARD 650 LT
LIQUID ADHESIVE OR POLYGUARD
CALIFORNIA SEALANT AT A RATE OF 50 -
75 SF/GAL

POLYGUARD BLINDSIDE MEMBRANE
FABRIC TOWARD CONCRETE POUR OR
SHOTCRETE NOT IN THE WATER TABLE -
CONSULT POLYGUARD IF IN THE WATER
TABLE

BS11

SECTION @ TIE BACK / SOIL NAIL HEAD

©POLYGUARD PRODUCTS, INC.
MATERIAL SEPARATED FOR CLARITY

Polyguard Products, Inc.
P.O. Box 755 - Ennis, TX 75120
Phone: 214-515-5000
Web Site - www.polyguard.com

<small>The information provided is based on data and knowledge considered to be true and accurate and is offered for the users' consideration, investigation and verification, but we do not warrant the results to be obtained. Please read all data sheets, statements, recommendations or suggestions in conjunction with our conditions of sale, which apply to all goods supplied by us.</small>	NOT TO SCALE
	EFFECTIVE DATE: 10/01/2022
	SUPERCEDES: 01/18/2022