

TOPPING SLAB- BY OTHERS

POLYGUARD POLYFLOW 18
MOLDED SHEET DRAIN AS
REQUIRED

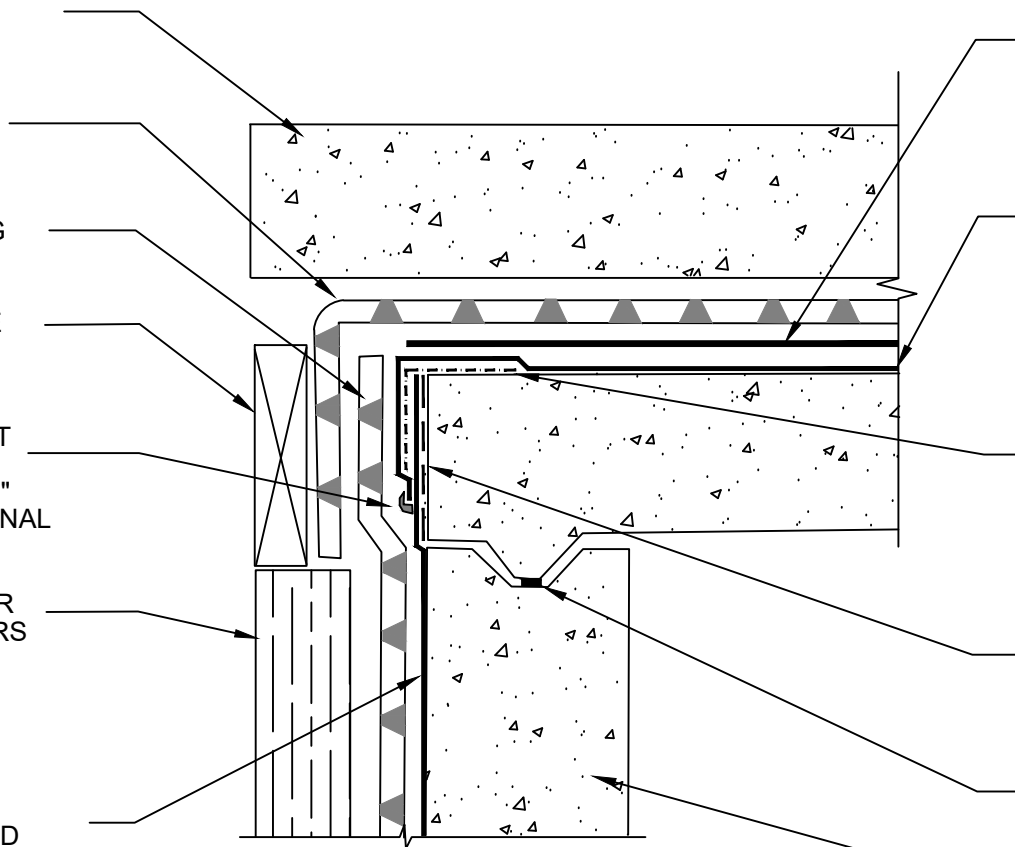
POLYFLOW 15 / 15P MOLDED
SHEET DRAIN FABRIC FACING
RETENTION SYSTEM

TEMPORARY FORM (REMOVE
FOR TIE IN)

MINIMUM 90 MILS OF
POLYGUARD DETAIL SEALANT
PW OR POLYGUARD LM-95
EXTENDED A MINIMUM OF 1/2"
TO EACH SIDE OF THE TERMINAL
EDGE

RETENTION SYSTEM - TIMBER
LAGGING SHOWN - BY OTHERS

POLYGUARD BLINDSIDE
MEMBRANE APPLIED OVER
POLYGUARD 606 TAPE -
PREPARE FABRIC OF
POLYGUARD BLINDSIDE
MEMBRANE WITH POLYGUARD
650 LT LIQUID ADHESIVE OR
POLYGUARD CALIFORNIA
SEALANT AT A RATE OF 50 - 75
SF/GAL



PROTECTION COURSE AS
REQUIRED - BY OTHERS

POLYGUARD 650 MEMBRANE OR
POLYGUARD PRM APPLIED TO
SUBSTRATE PREPARED WITH
POLYGUARD 650 LT LIQUID
ADHESIVE OR POLYGUARD
CALIFORNIA SEALANT AT A RATE
OF 250 - 300 SF/GAL AND ONTO
FILM SIDE OF POLYGUARD
BLINDSIDE MEMBRANE

POLYGUARD DETAIL TAPE
APPLIED TO SUBSTRATE
PREPARED WITH POLYGUARD
650 LT LIQUID ADHESIVE OR
POLYGUARD CALIFORNIA
SEALANT AT A RATE OF 250 - 300
SF/GAL

POLYGUARD 606 TAPE APPLIED
TO SUBSTRATE PREPARED WITH
POLYGUARD 650 LT LIQUID
ADHESIVE OR POLYGUARD
CALIFORNIA SEALANT AT A RATE
OF 250 - 300 SF/GAL

WATERSTOP BY OTHERS

CONCRETE WALL OR
SHOTCRETE WHEN NOT IN
WATER TABLE - BY OTHERS -
CONSULT POLYGUARD IF IN
WATER TABLE

BS12

SECTION @ TIE IN TO 650 / PRM MEMBRANE

Polyguard Products, Inc.
P.O. Box 755 - Ennis, TX 75120
Phone: 214-515-5000
Web Site - www.polyguard.com

©POLYGUARD PRODUCTS, INC.
MATERIAL SEPARATED FOR CLARITY

<small>The information provided is based on data and knowledge considered to be true and accurate and is offered for the users' consideration, investigation and verification, but we do not warrant the results to be obtained. Please read all data sheets, statements, recommendations or suggestions in conjunction with our conditions of sale, which apply to all goods supplied by us.</small>	NOT TO SCALE
	EFFECTIVE DATE: 10/01/2022
	SUPERCEDES: 01/18/2022