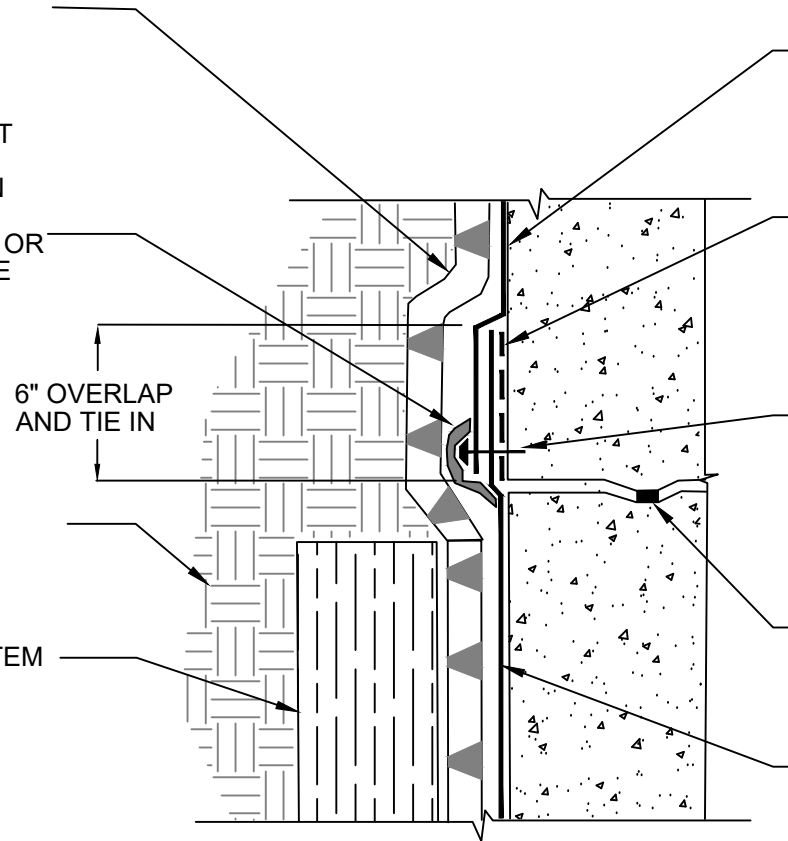


POLYGUARD POLYFLOW 15 / 15P
MOLDED SHEET DRAINAGE -
FABRIC FACING RETENTION
SYSTEM AND BACKFILL

MINIMUM 90 MILS OF
POLYGUARD DETAIL SEALANT
PW OR POLYGUARD LM-95
APPLIED OVER TERMINATION
STRIP AND TIE IN SEAMS OF
POLYGUARD 650 MEMBRANE OR
POLYGUARD PRM MEMBRANE
AND POLYGUARD BLINDSIDE
MEMBRANE EXTENDED A
MINIMUM OF 1/2" PAST
TERMINAL EDGE

SOIL - BY OTHERS

APPROVED RETENTION SYSTEM
- BY OTHERS



POLYGUARD 650 MEMBRANE OR POLYGUARD PRM
MEMBRANE APPLIED TO CLEAN, DRY, FROST FREE
SUBSTRATE PREPARED WITH POLYGUARD 650 LT
LIQUID ADHESIVE OR POLYGUARD CALIFORNIA
SEALANT AT A RATE OF 250 - 300 SF/GAL AND
ONTO EXISTING POLYGUARD BLINDSIDE
MEMBRANE MINIMUM OF 6"

POLYGUARD 606 TAPE APPLIED TO CLEAN, DRY,
FROST FREE SUBSTRATE PREPARED WITH
POLYGUARD 650 LT LIQUID ADHESIVE OR
POLYGUARD CALIFORNIA SEALANT AT A RATE OF
250 - 300 SF/GAL

1/8" X 1" METAL TERMINATION STRIP ALIGNED
ALONG BOTTOM EDGE OF POLYGUARD 650
MEMBRANE OR POLYGUARD PRM MEMBRANE WITH
FASTENERS SPACED 2" INWARD FROM END OF
TERMINATION STRIP AND NOT MORE THAN 8"
SPACING BETWEEN FASTENERS - IF TERMINATION
IS NOT IN WATER TABLE NO TERM BAR IS
REQUIRED - BY OTHERS

WATERSTOP - BY OTHERS

POLYGUARD BLINDSIDE MEMBRANE FABRIC
TOWARD CONCRETE POUR OR SHOTCRETE WHEN
NOT IN WATER TABLE - CONSULT POLYGUARD IF IN
THE WATER TABLE - FOLD BACK TOP FLAP AND
PREPARE WITH POLYGUARD 650 LT LIQUID
ADHESIVE OR POLYGUARD CALIFORNIA SEALANT
AT A RATE OF 50 - 75 SF/GAL PRIOR TO APPLYING
OVER POLYGUARD 606 TAPE

BS13

SECTION @ VERTICAL TERMINATION OF 650 / PRM TO BLINDSIDE MEMBRANE

©POLYGUARD PRODUCTS, INC.
MATERIAL SEPARATED FOR CLARITY

<small>The information provided is based on data and knowledge considered to be true and accurate and is offered for the users' consideration, investigation and verification, but we do not warrant the results to be obtained. Please read all data sheets, statements, recommendations or suggestions in conjunction with our conditions of sale, which apply to all goods supplied by us.</small>	NOT TO SCALE
	EFFECTIVE DATE: 10/01/2022
	SUPERCEDES: 01/18/2022