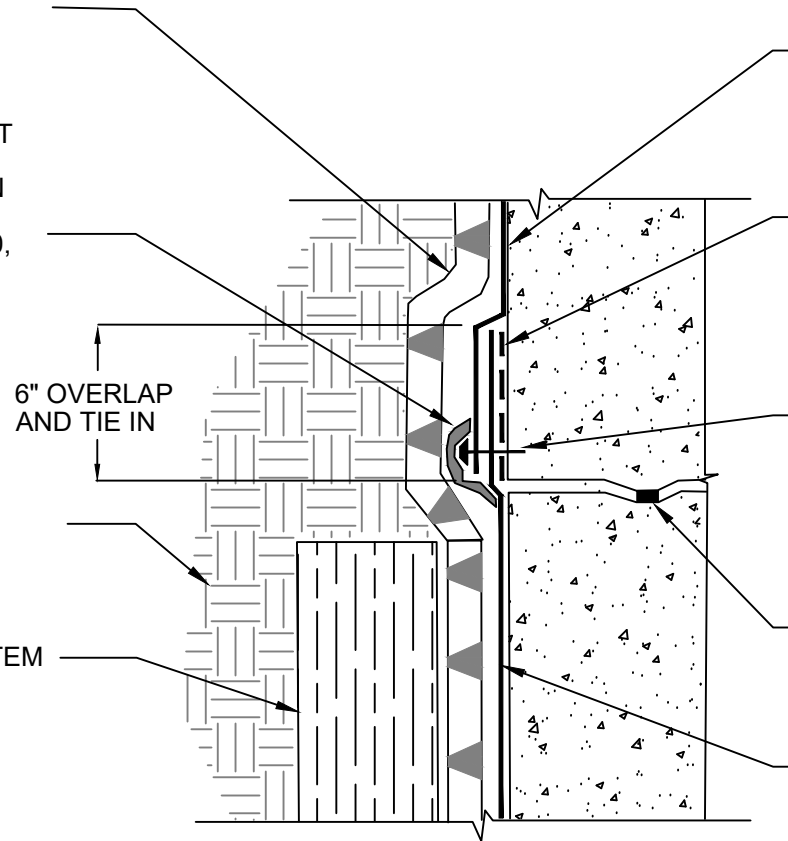


POLYGUARD POLYFLOW 15 / 15P
MOLDED SHEET DRAINAGE -
FABRIC FACING RETENTION
SYSTEM AND BACKFILL

MINIMUM 90 MILS OF
POLYGUARD DETAIL SEALANT
PW OR POLYGUARD LM-95
APPLIED OVER TERMINATION
STRIP AND TIE IN SEAMS OF
POLYGUARD MEMBRANE: 650,
650 PRM OR 650 WRM AND
POLYGUARD BLINDSIDE
MEMBRANE EXTENDED A
MINIMUM OF 1/2" PAST
TERMINAL EDGE

SOIL - BY OTHERS

APPROVED RETENTION SYSTEM
- BY OTHERS



POLYGUARD MEMBRANE: 650, 650 PRM OR 650
WRM APPLIED TO CLEAN, DRY, FROST FREE
SUBSTRATE PREPARED WITH POLYGUARD 650 LT
LIQUID ADHESIVE OR POLYGUARD CALIFORNIA
SEALANT AT A RATE OF 250 - 300 SF/GAL AND
ONTO EXISTING POLYGUARD BLINDSIDE
MEMBRANE MINIMUM OF 6"

POLYGUARD 606 TAPE APPLIED TO CLEAN, DRY,
FROST FREE SUBSTRATE PREPARED WITH
POLYGUARD 650 LT LIQUID ADHESIVE OR
POLYGUARD CALIFORNIA SEALANT AT A RATE OF
250 - 300 SF/GAL

1/8" X 1" METAL TERMINATION STRIP ALIGNED
ALONG BOTTOM EDGE OF POLYGUARD 650, 650
PRM OR 650 WRM MEMBRANE WITH FASTENERS
SPACED 2" INWARD FROM END OF TERMINATION
STRIP AND NOT MORE THAN 8" SPACING BETWEEN
FASTENERS - IF TERMINATION IS NOT IN WATER
TABLE NO TERM BAR IS REQUIRED - BY OTHERS

WATERSTOP - BY OTHERS

POLYGUARD BLINDSIDE MEMBRANE FABRIC
TOWARD CONCRETE POUR OR SHOTCRETE WHEN
NOT IN WATER TABLE - CONSULT POLYGUARD IF IN
THE WATER TABLE - FOLD BACK TOP FLAP AND
PREPARE WITH POLYGUARD 650 LT LIQUID
ADHESIVE OR POLYGUARD CALIFORNIA SEALANT
AT A RATE OF 50 - 75 SF/GAL PRIOR TO APPLYING
OVER POLYGUARD 606 TAPE

BS13

SECTION @ VERTICAL TERMINATION OF 650 / 650 PRM / 650 WRM TO BLINDSIDE MEMBRANE

©POLYGUARD PRODUCTS, INC.
MATERIAL SEPARATED FOR CLARITY

<small>The information provided is based on data and knowledge considered to be true and accurate and is offered for the users' consideration, investigation and verification, but we do not warrant the results to be obtained. Please read all data sheets, statements, recommendations or suggestions in conjunction with our conditions of sale, which apply to all goods supplied by us.</small>	NOT TO SCALE
	EFFECTIVE DATE: 12/16/2024
	SUPERCEDES: 07/15/2024