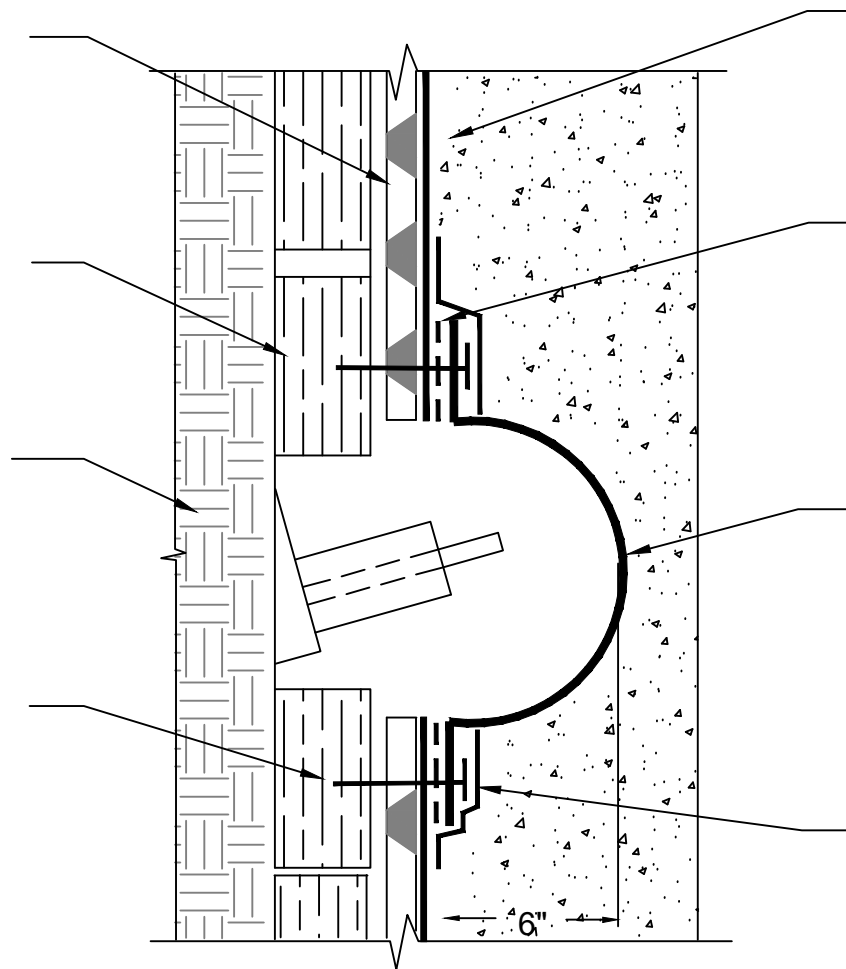


POLYGUARD POLYFLOW 15 / 15 P  
SHEET MOLDED DRAIN FABRIC FACING  
RETENTION SYSTEM

RETENTION SYSTEM - WOOD LAGGING  
SHOWN - BY OTHERS

SOIL - BY OTHERS

FASTEN POLYGUARD POLYCOVER TO  
RETENTION SYSTEM AT EACH FLANGE  
CORNER PRE DRILL FASTENER HOLES  
IN COLD WEATHER



POLYGUARD BLINDSIDE MEMBRANE  
FABRIC FACING CONCRETE POUR  
OR SHOTCRETE WHEN NOT IN  
WATER TABLE - CONSULT  
POLYGUARD IF IN THE WATER  
TABLE

POLYGUARD 606 TAPE APPLIED TO  
BASE OF CLEAN DRY POLYGUARD  
POLYCOVER AND FASTENER HEAD  
- APPLY POLYGUARD 650 LT LIQUID  
ADHESIVE OR POLYGUARD  
CALIFORNIA SEALANT AT A RATE  
OF 50 - 75 SF/GAL PRIOR TO  
APPLICATION OVER FABRIC SIDE  
OF POLYGUARD BLINDSIDE  
MEMBRANE

POLYGUARD PREFORMEND  
POLYCOVER OR TIEBACK COVER  
FIELD MADE - IF FIELD MADE  
CONTACT POLYGUARD FOR  
RECOMMENDATIONS

POLYGUARD LM-95 APPLIED 3"  
ONTO UNPRIMED POLYGUARD  
POLYCOVER AND 3" ON THE  
FABRIC OF THE POLYGUARD  
BLINDSIDE MEMBRANE PREPARED  
WITH POLYGUARD 650 LT LIQUID  
ADHESIVE OR POLYGUARD  
CALIFORNIA SEALANT AT A RATE  
OF 50 - 75 SF/GAL

**BS15**

SECTION @ POLYCOVER OVER THE TIE BACK / SOIL NAIL ASSEMBLY

<small>The information provided is based on data and knowledge considered to be true and accurate and is offered for the users' consideration, investigation and verification, but we do not warrant the results to be obtained. Please read all data sheets, statements, recommendations or suggestions in conjunction with our conditions of sale, which apply to all goods supplied by us.</small>	NOT TO SCALE
	EFFECTIVE DATE: 07/15/2024
	SUPERCEDES: 10/01/2022