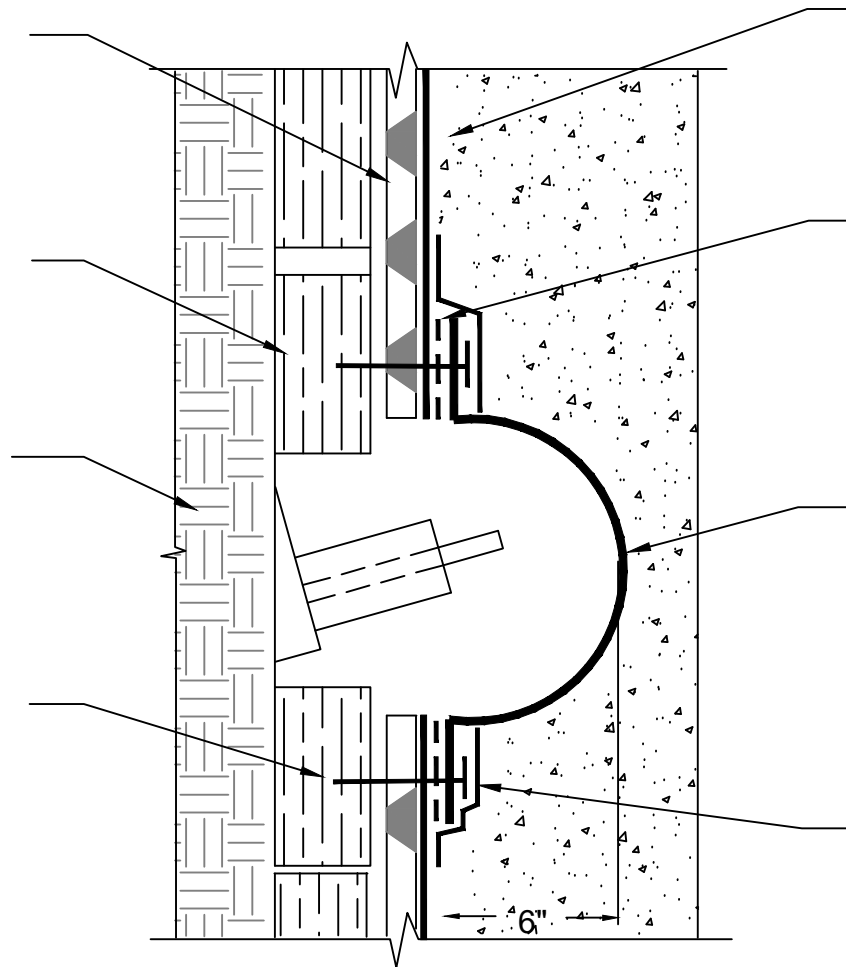


POLYGUARD POLYFLOW 15 / 15 P
SHEET MOLDED DRAIN FABRIC FACING
RETENTION SYSTEM

RETENTION SYSTEM - WOOD LAGGING
SHOWN - BY OTHERS

SOIL - BY OTHERS

FASTEN POLYGUARD POLYCOVER TO
RETENTION SYSTEM AT EACH FLANGE
CORNER PRE DRILL FASTENER HOLES
IN COLD WEATHER



POLYGUARD BLINDSIDE MEMBRANE
FABRIC FACING CONCRETE POUR
OR SHOTCRETE WHEN NOT IN
WATER TABLE - CONSULT
POLYGUARD IF IN THE WATER
TABLE

POLYGUARD 606 TAPE APPLIED TO
BASE OF CLEAN DRY POLYGUARD
POLYCOVER AND FASTENER HEAD
- APPLY POLYGUARD 650 LT LIQUID
ADHESIVE OR POLYGUARD
CALIFORNIA SEALANT AT A RATE
OF 50 - 75 SF/GAL PRIOR TO
APPLICATION OVER FABRIC SIDE
OF POLYGUARD BLINDSIDE
MEMBRANE

POLYGUARD PREFORMED
POLYCOVER OR TIEBACK COVER
FIELD MADE - IF FIELD MADE
CONTACT POLYGUARD FOR
RECOMMENDATIONS

POLYGUARD LM-95 APPLIED 3"
ONTO UNPRIMED POLYGUARD
POLYCOVER AND 3" ON THE
FABRIC OF THE POLYGUARD
BLINDSIDE MEMBRANE PREPARED
WITH POLYGUARD 650 LT LIQUID
ADHESIVE OR POLYGUARD
CALIFORNIA SEALANT AT A RATE
OF 50 - 75 SF/GAL

BS15

SECTION @ POLYCOVER OVER THE TIE BACK / SOIL NAIL ASSEMBLY

Polyguard Products, Inc.
P.O. Box 755 - Ennis, TX 75120
Phone: 214-515-5000
Web Site - www.polyguard.com

©POLYGUARD PRODUCTS, INC.
MATERIAL SEPARATED FOR CLARITY

<small>The information provided is based on data and knowledge considered to be true and accurate and is offered for the users' consideration, investigation and verification, but we do not warrant the results to be obtained. Please read all data sheets, statements, recommendations or suggestions in conjunction with our conditions of sale, which apply to all goods supplied by us.</small>	NOT TO SCALE
	EFFECTIVE DATE: 10/01/2022
	SUPERCEDES: 01/18/2022