

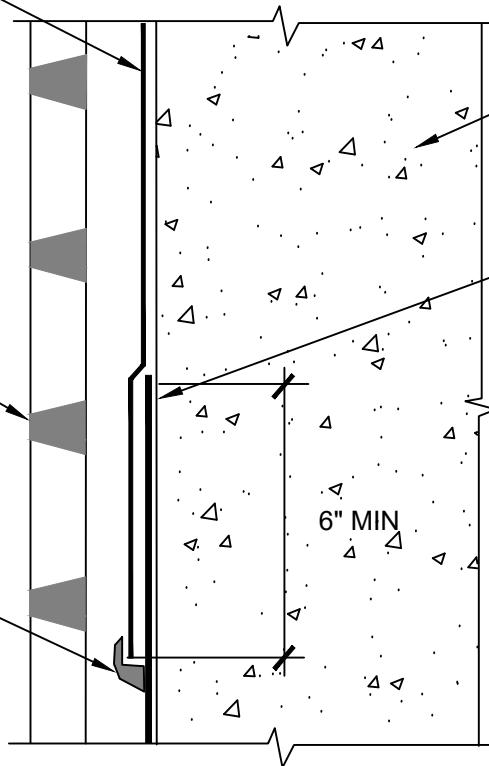
POLYGUARD 650 MEMBRANE OR
POLYGUARD PRM MEMBRANE
APPLIED TO CLEAN, DRY, FROST-
FREE SUBSTRATE PREPARED WITH
POLYGUARD 650 LT LIQUID
ADHESIVE OR POLYGUARD
CALIFORNIA SEALANT AT A RATE OF
250 - 300 SF/GAL AND OVER
EMBEDDED POLYGUARD BLINDSIDE
MEMBRANE A MINIMUM OF 6"

APPROVED SUBSTRATE - BY
OTHERS

EMBEDDED POLYGUARD BLINDSIDE
MEMBRANE

POLYGUARD POLYFLOW 15 / 15P
SHEET MOLDED DRAIN FABRIC
TOWARD SOIL

90 MILS MINIMUM POLYGUARD
DETAIL SEALANT PW APPLIED TO
TERMINAL EDGE OF POLYGUARD
650 MEMBRANE OR POLYGUARD
PRM MEMBRANE AND ONTO EACH
SIDE OF THE EDGE A MINIMUM OF
3/4"



BS3

SECTION @ EMBEDDED BLINDSIDE TIE IN TO 650 / PRM MEMBRANE

Polyguard Products, Inc.
P.O. Box 755 - Ennis, TX 75120
Phone: 214-515-5000
Web Site - www.polyguard.com

©POLYGUARD PRODUCTS, INC.
MATERIAL SEPARATED FOR CLARITY

| | |
|-------------------------------------------------------------------------------------------------------------------------------------------------------------------------------------------------------------------------------------------------------------------------------------------------------------------------------------------------------------------------------------------------------|-------------------------------|
| <small>The information provided is based on data and knowledge considered to be true and accurate and is offered for the users' consideration, investigation and verification, but we do not warrant the results to be obtained. Please read all data sheets, statements, recommendations or suggestions in conjunction with our conditions of sale, which apply to all goods supplied by us.</small> | NOT TO SCALE |
| | EFFECTIVE DATE: 07/15/2024 |
| | SUPERCEDES: 10/01/2022 |