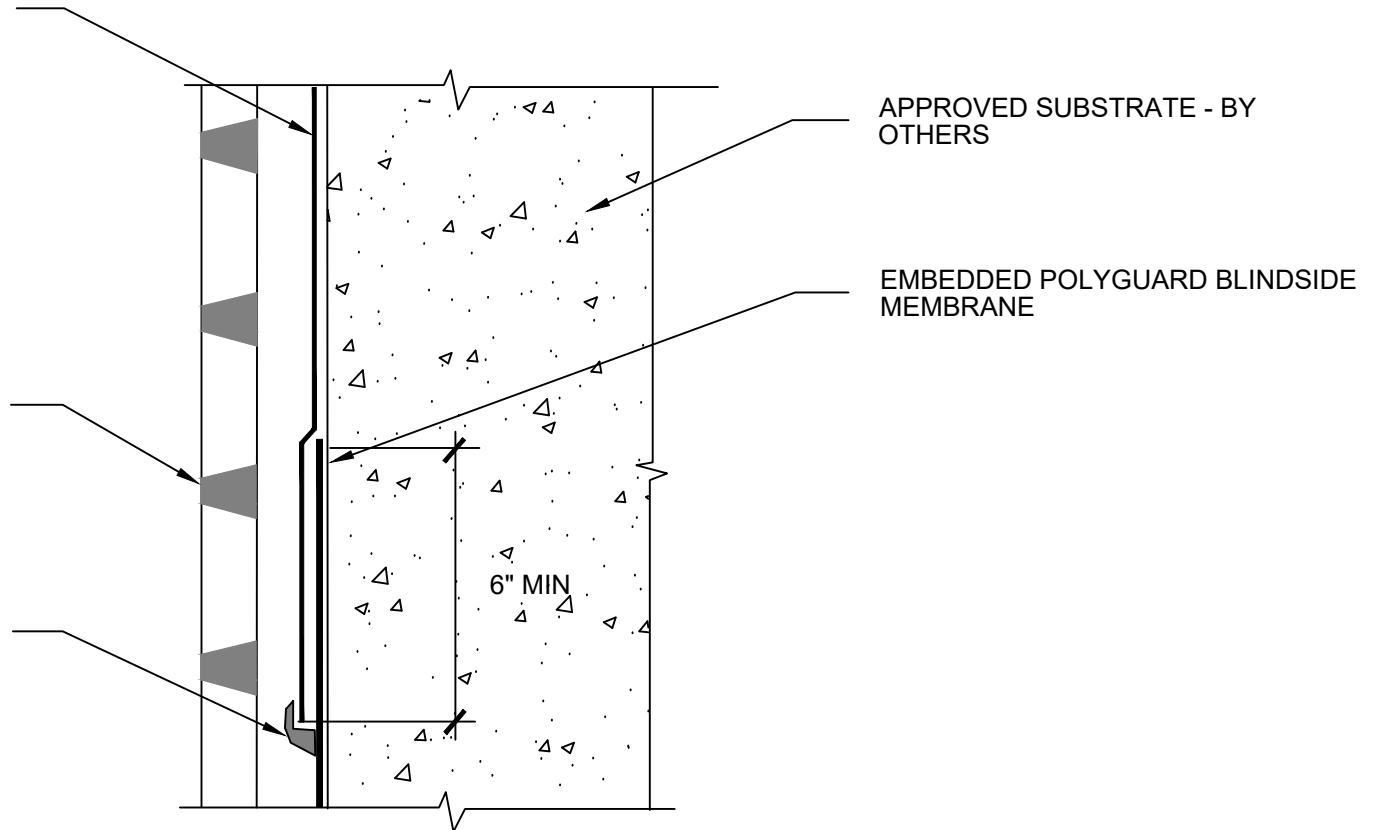


POLYGUARD MEMBRANE: 650, 650 PRM OR 650 WRM APPLIED TO CLEAN, DRY, FROST FREE SUBSTRATE PREPARED WITH POLYGUARD 650 LT LIQUID ADHESIVE OR POLYGUARD CALIFORNIA SEALANT AT A RATE OF 250 - 300 SF/GAL AND OVER EMBEDDED POLYGUARD BLINDSIDE MEMBRANE A MINIMUM OF 6"

POLYGUARD POLYFLOW 15 / 15P SHEET MOLDED DRAIN FABRIC TOWARD SOIL

90 MILS MINIMUM POLYGUARD DETAIL SEALANT PW APPLIED TO TERMINAL EDGE OF POLYGUARD MEMBRANE: 650, 650 PRM OR 650 WRM AND FEATHERED ONTO EACH SIDE OF THE LAP A MINIMUM OF 3/4"



APPROVED SUBSTRATE - BY OTHERS

EMBEDDED POLYGUARD BLINDSIDE MEMBRANE

6" MIN

**BS3**

**SECTION @ EMBEDDED BLINDSIDE TIE IN TO 650 / 650 PRM / 650 WRM MEMBRANE**

©POLYGUARD PRODUCTS, INC.  
MATERIAL SEPARATED FOR CLARITY

Polyguard Products, Inc.  
P.O. Box 755 - Ennis, TX 75120  
Phone: 214-515-5000  
Web Site - www.polyguard.com

<small>The information provided is based on data and knowledge considered to be true and accurate and is offered for the users' consideration, investigation and verification, but we do not warrant the results to be obtained. Please read all data sheets, statements, recommendations or suggestions in conjunction with our conditions of sale, which apply to all goods supplied by us.</small>	NOT TO SCALE
	EFFECTIVE DATE: 12/16/2024
	SUPERCEDES: 10/01/2022