

POLYGUARD POLYFLOW 15 / 15P MOLDED SHEET DRAIN FABRIC FACING RETENTION SYSTEM

REFER TO POLYGUARD END LAP DETAIL

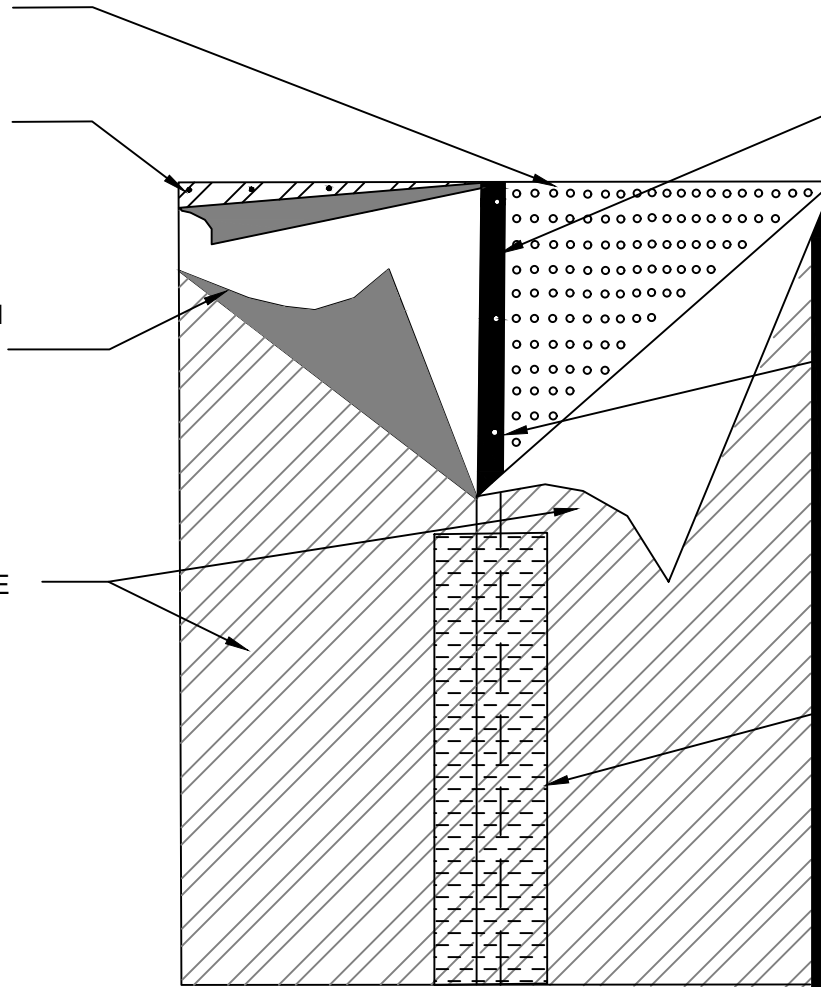
PROTECTIVE PACKAGING FILM REMOVED DURING INSTALLATION

POLYGUARD BLINDSIDE MEMBRANE FABRIC TOWARD CONCRETE POUR OR SHOTCRETE WHEN NOT IN THE WATER TABLE - CONSULT POLYGUARD IF IN THE WATER TABLE

4" FACTORY SELVAGE WITH PROTECTIVE RELEASE FILM COVERING

FASTENERS 18" - 24" O.C. INSTALLED IN OUTSIDE 1" OF SELVAGE EDGE - BY OTHERS

12" STRIP OF POLYGUARD FABRIC TAPE CENTERED OVER SEAM OF POLYGUARD BLINDSIDE MEMBRANE FABRIC PREPARED WITH POLYGUARD 650 LT LIQUID ADHESIVE OR POLYGUARD CALIFORNIA SEALANT AT A RATE OF 50 - 75 SF/GAL



BS6

SECTION @ REINFORCED SIDE LAP SEAM

©POLYGUARD PRODUCTS, INC.
MATERIAL SEPARATED FOR CLARITY

<small>The information provided is based on data and knowledge considered to be true and accurate and is offered for the users' consideration, investigation and verification, but we do not warrant the results to be obtained. Please read all data sheets, statements, recommendations or suggestions in conjunction with our conditions of sale, which apply to all goods supplied by us.</small>	NOT TO SCALE
	EFFECTIVE DATE: 07/15/2024
	SUPERCEDES: 10/01/2022