

POLYGUARD POLYFLOW 15 SHEET
MOLDED DRAIN FABRIC FACING
RETENTION SYSTEM

SPRAY A 12" WIDE AREA OF LOW
RISE ADHESIVE - BY OTHERS
ONTO DRAINBOARD AND ONTO
POLYGUARD CR SEAM TAPE
ALLOW TO FLASH OFF AND PRESS
FILM SIDE OF POLYGUARD CRM
MEMBRANE AND POLYGUARD CR
SEAM TAPE INTO ADHESIVE ON
POLYGUARD POLYFLOW 15

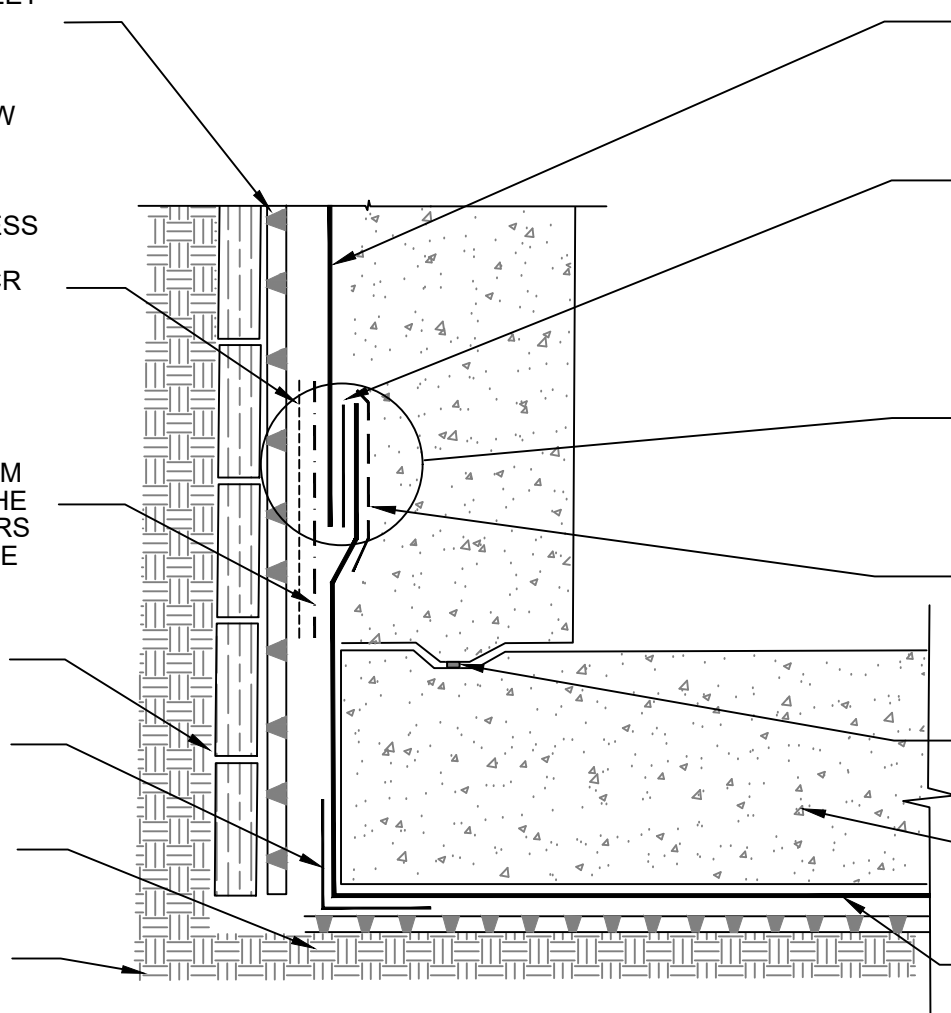
POLYGUARD CR SEAM TAPE
APPLIED TO FILM SIDE OF ALL
SEAMS OF THE POLYGUARD CRM
MEMBRANE AND PRESS INTO THE
LOW RISE ADHESIVE - BY OTHERS
THAT HAS BEEN APPLIED TO THE
DRAINBOARD

RETENTION SYSTEM - BY
OTHERS TIMBER LAGGING
SHOWN

POLYGUARD CR INSIDE AND
OUTSIDE CORNER BOOTS
WERE APPLICABLE

POLYGUARD POLYFLOW 18
MOLDED SHEET DRAINAGE
FABRIC TOWARD SUBSTRATE

APPROVED SUBSTRATE -
BY OTHERS



POLYGUARD CRM MEMBRANE
FABRIC TOWARD CONCRETE POUR

MINIMUM 90 MILS OF POLYGUARD
CR LIQUID MEMBRANE APPLIED TO
POLYGUARD CRM MEMBRANE A
MAXIMUM 4" - PREPARE FABRIC
WITH POLYGUARD CR SEALANT AT
A RATE OF 50 - 75 SF/GAL

VERTICAL ENDLAP CENTER OF
LIFT DETAIL - REFERENCE
POLYGUARD END LAP DETAIL

12" STRIP OF POLYGUARD FABRIC
APPLIED TO CLEAN DRY
POLYGUARD CRM MEMBRANE
PREPARED WITH POLYGUARD CR
SEALANT AT A RATE OF 50 - 75
SF/GAL

WATERSTOP - BY OTHERS

EXISTING CONCRETE -
BY OTHERS

POLYGUARD CRM MEMBRANE
FABRIC TOWARD CONCRETE POUR
AND OVERLAPPING VERTICAL
POLYGUARD CRM MEMBRANE - 3"
MINIMUM 4" MAXIMUM

CRH1 SECTION @ HORIZONTAL TO VERTICAL TIE IN

Polyguard Products, Inc.
P.O. Box 755 - Ennis, TX 75120
Phone: 214-515-5000
Web Site - www.polyguard.com

©POLYGUARD PRODUCTS, INC.
MATERIAL SEPARATED FOR CLARITY

<p>The information provided is based on data and knowledge considered to be true and accurate and is offered for the users' consideration, investigation and verification, but we do not warrant the results to be obtained. Please read all data sheets, statements, recommendations or suggestions in conjunction with our conditions of sale, which apply to all goods supplied by us.</p>	NOT TO SCALE
	EFFECTIVE DATE: 07/15/2024
	SUPERCEDES: 10/01/2022