

POLYGUARD POLYFLOW 15 SHEET  
MOLDED DRAIN FABRIC FACING  
RETENTION SYSTEM

SPRAY A 12" WIDE AREA OF LOW  
RISE ADHESIVE - BY OTHERS  
ONTO DRAINBOARD AND ONTO  
POLYGUARD CR SEAM TAPE  
ALLOW TO FLASH OFF AND PRESS  
FILM SIDE OF POLYGUARD CRM  
MEMBRANE AND POLYGUARD CR  
SEAM TAPE INTO ADHESIVE ON  
POLYGUARD POLYFLOW 15

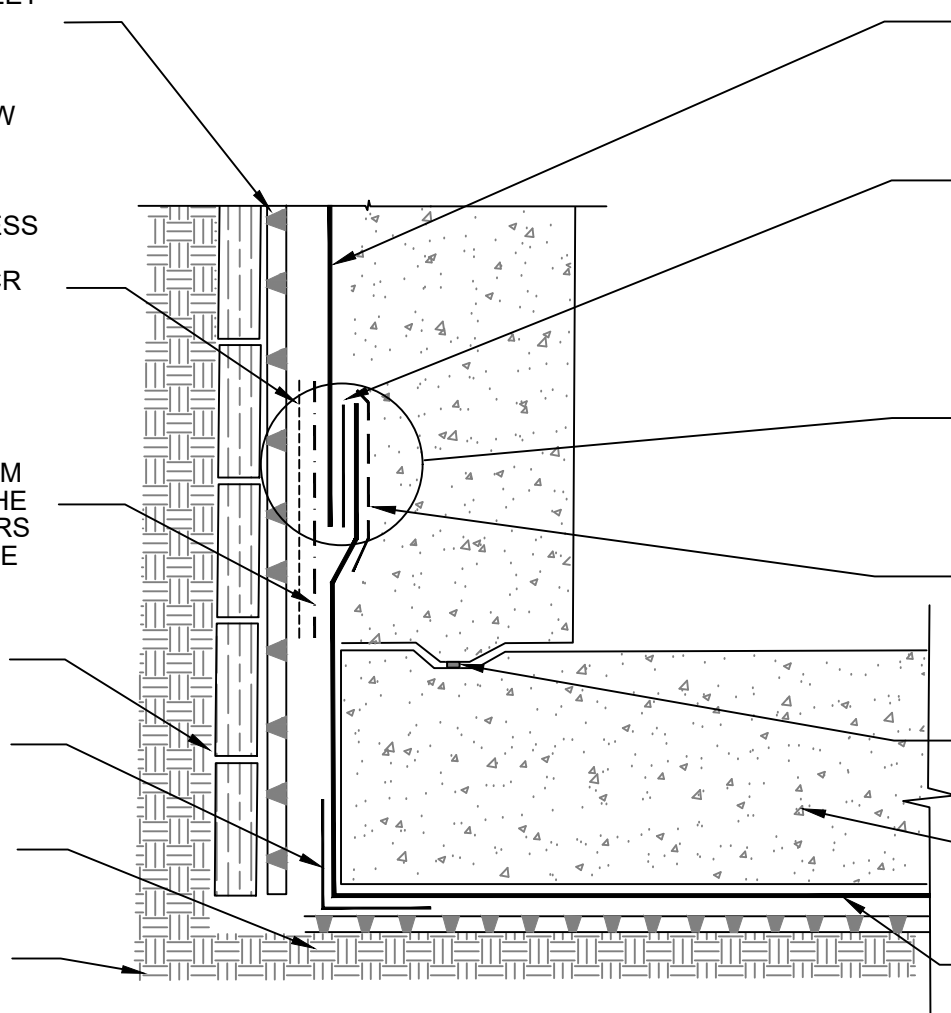
POLYGUARD CR SEAM TAPE  
APPLIED TO FILM SIDE OF ALL  
SEAMS OF THE POLYGUARD CRM  
MEMBRANE AND PRESS INTO THE  
LOW RISE ADHESIVE - BY OTHERS  
THAT HAS BEEN APPLIED TO THE  
DRAINBOARD

RETENTION SYSTEM - BY  
OTHERS TIMBER LAGGING  
SHOWN

POLYGUARD CR INSIDE AND  
OUTSIDE CORNER BOOTS  
WERE APPLICABLE

POLYGUARD POLYFLOW 18  
MOLDED SHEET DRAINAGE  
FABRIC TOWARD SUBSTRATE

APPROVED SUBSTRATE -  
BY OTHERS



POLYGUARD CRM MEMBRANE  
FABRIC TOWARD CONCRETE POUR

MINIMUM 90 MILS OF POLYGUARD  
CR LIQUID MEMBRANE APPLIED TO  
POLYGUARD CRM MEMBRANE A  
MAXIMUM 4" - PREPARE FABRIC  
WITH POLYGUARD CR SEALANT AT  
A RATE OF 50 - 75 SF/GAL

VERTICAL ENDLAP CENTER OF  
LIFT DETAIL - REFERENCE  
POLYGUARD END LAP DETAIL

12" STRIP OF POLYGUARD FABRIC  
APPLIED TO CLEAN DRY  
POLYGUARD CRM MEMBRANE  
PREPARED WITH POLYGUARD CR  
SEALANT AT A RATE OF 50 - 75  
SF/GAL

WATERSTOP - BY OTHERS

EXISTING CONCRETE -  
BY OTHERS

POLYGUARD CRM MEMBRANE  
FABRIC TOWARD CONCRETE POUR  
AND OVERLAPPING VERTICAL  
POLYGUARD CRM MEMBRANE - 3"  
MINIMUM 4" MAXIMUM

**CRH1**

**SECTION @ HORIZONTAL TO VERTICAL TIE IN**

Polyguard Products, Inc.  
P.O. Box 755 - Ennis, TX 75120  
Phone: 214-515-5000  
Web Site - www.polyguard.com

©POLYGUARD PRODUCTS, INC.  
MATERIAL SEPARATED FOR CLARITY

<p>The information provided is based on data and knowledge considered to be true and accurate and is offered for the users' consideration, investigation and verification, but we do not warrant the results to be obtained. Please read all data sheets, statements, recommendations or suggestions in conjunction with our conditions of sale, which apply to all goods supplied by us.</p>	NOT TO SCALE
	EFFECTIVE DATE: 10/01/2022
	SUPERCEDES: 02/04/2022