

POLYGUARD ULTRA CRM APPLIED TO CLEAN, DRY, AND FROST FREE CONCRETE PREPARED WITH POLYGUARD 650 LT LIQUID ADHESIVE OR POLYGUARD CALIFORNIA SEALANT AT A RATE OF 250- 300 SF/GAL

STRIP OF POLYGUARD ULTRA CRM APPLIED TO CLEAN, DRY, AND FROST FREE CONCRETE PREPARED WITH POLYGUARD 650 LT LIQUID ADHESIVE OR POLYGUARD CALIFORNIA SEALANT AT A RATE OF 250 - 300 SF/GAL

POLYGUARD POLYFLOW 15 SHEET MOLDED DRAIN - FABRIC TOWARD BACKFILL

MINIMUM 3/4" CANT OF POLYGUARD LM-95

WATERSTOP - BY OTHERS

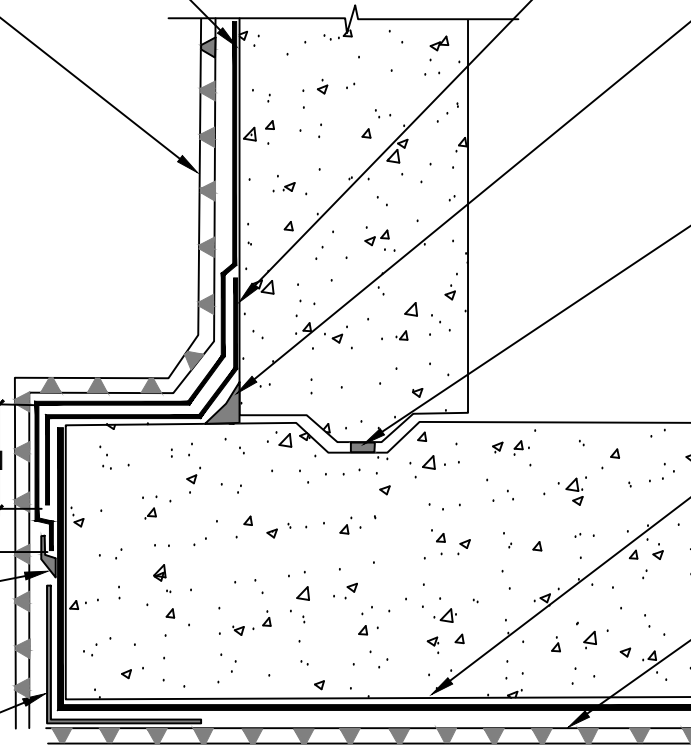
90 MIL MINIMUM THICKNESS OF POLYGUARD CR LIQUID MEMBRANE EXTENDED ONTO A MINIMUM OF 1/2" TO EACH SIDE OF THE TERMINAL EDGE APPLIED TO HDPE PREPARED WITH POLYGUARD CR SEALANT AT A RATE OF 50 - 75 SF/GAL

4" MIN  
2" MIN

EXISTING POLYGUARD CRM FABRIC TOWARD CONCRETE POUR

POLYGUARD POLYFLOW 18 MOLDED SHEET DRAINAGE - FABRIC TOWARD SUBSTRATE

POLYGUARD CR INSIDE CORNER BOOT



**CRH13**

**SECTION @ ULTRA CRM TIE IN TO EMBEDDED CRM MEMBRANE WITH POLYFLOW 15**

©POLYGUARD PRODUCTS, INC.  
MATERIAL SEPARATED FOR CLARITY

Polyguard Products, Inc.  
P.O. Box 755 - Ennis, TX 75120  
Phone: 214-515-5000  
Web Site - www.polyguard.com

<p>The information provided is based on data and knowledge considered to be true and accurate and is offered for the users' consideration, investigation and verification, but we do not warrant the results to be obtained. Please read all data sheets, statements, recommendations or suggestions in conjunction with our conditions of sale, which apply to all goods supplied by us.</p>	NOT TO SCALE
	EFFECTIVE DATE: 10/01/2022
	SUPERCEDES: 02/04/2022