

PENETRATION SIDEWALLS
ABRADED AND PREPARED
WITH POLYGUARD CR
SEALANT AT A RATE OF
175 - 200 SF/GAL

SEALANT AND BACKER
ROD - BY OTHERS

CONCRETE POUR - BY
OTHERS

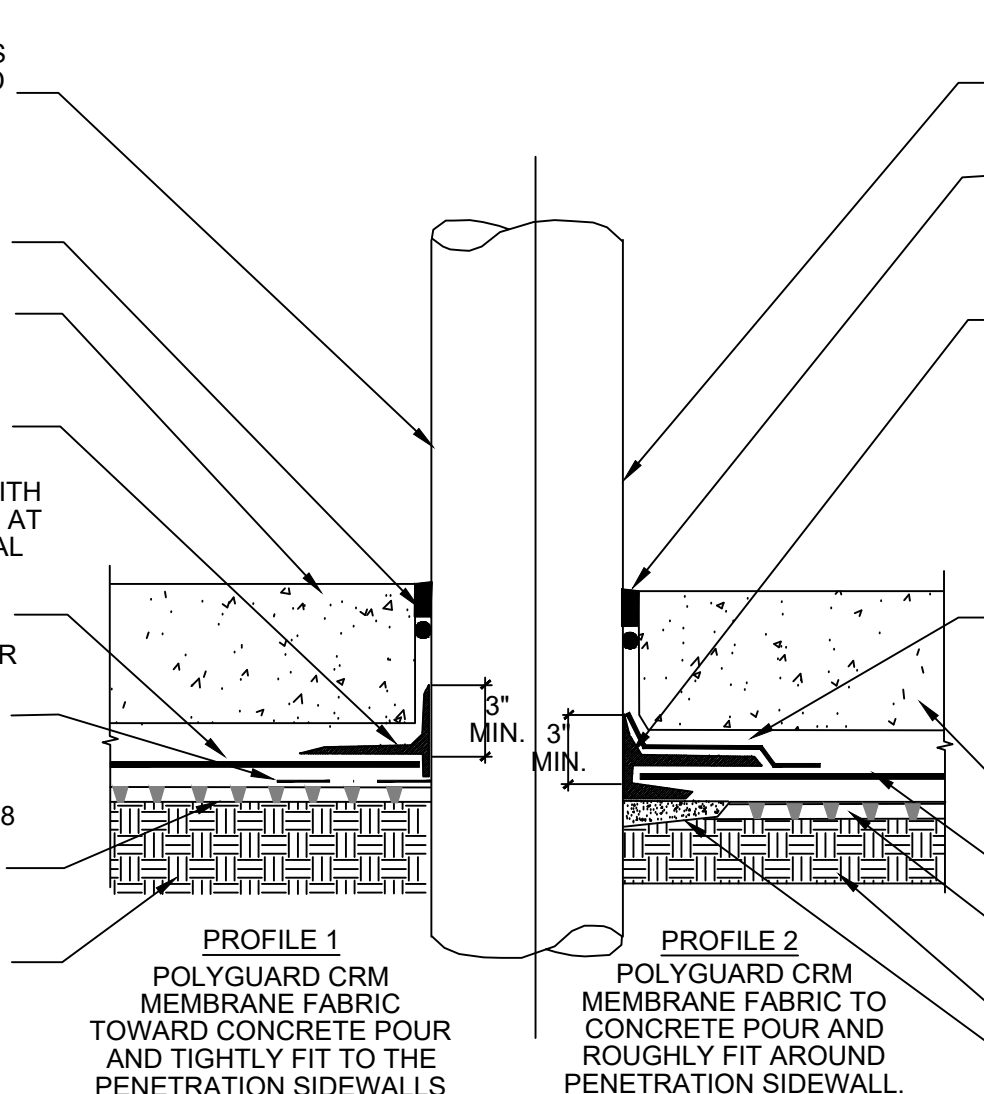
MINIMUM 90 MILS OF
POLYGUARD CR LIQUID
MEMBRANE APPLIED TO
POLYGUARD CRM
MEMBRANE PREPARED WITH
POLYGUARD CR SEALANT AT
A RATE OF 175 - 200 SF/GAL

POLYGUARD CRM
MEMBRANE FABRIC
TOWARD CONCRETE POUR

POLYGUARD CR SEAM
TAPE ADHESIVE SIDE UP

POLYGUARD POLYFLOW 18
MOLDED SHEET DRAIN
FABRIC TOWARD
SUBSTRATE

APPROVED SUBSTRATE
- BY OTHERS



PENETRATION SIDEWALLS ABRADED
AND PREPARED WITH POLYGUARD CR
SEALANT APPLIED AT A RATE OF 175 -
200 SF/GAL

SEALANT AND BACKER ROD - BY
OTHERS

MINIMUM 90 MILS OF POLYGUARD CR
LIQUID MEMBRANE APPLIED TO
CONCRETE PREPARED WITH
POLYGUARD CR SEALANT AT A RATE OF
175 - 200 SF/GAL - ENCAPSULATE
POLYGUARD CRM MEMBRANE INTO
WET POLYGUARD CR LIQUID
MEMBRANE AND ONTO SIDEWALLS -
PREPARE FABRIC WITH POLYGUARD
CR SEALANT AT A RATE OF 50 - 75
SF/GAL

POLYGUARD FABRIC TAPE APPLIED
OVER POLYGUARD CR LIQUID
MEMBRANE AND ONTO FABRIC OF
POLYGUARD CRM MEMBRANE
PREPARED WITH POLYGUARD CR
SEALANT AT A RATE OF 50 - 75 SF/GAL

CONCRETE POUR - BY OTHERS

POLYGUARD CRM MEMBRANE FABRIC
TOWARD CONCRETE POUR

POLYGUARD POLYFLOW 18 MOLDED
SHEET DRAIN FABRIC TOWARD
SUBSTRATE

APPROVED SUBSTRATE - BY OTHERS

CONCRETE WELL - BY OTHERS

PROFILE 1
POLYGUARD CRM
MEMBRANE FABRIC
TOWARD CONCRETE POUR
AND TIGHTLY FIT TO THE
PENETRATION SIDEWALLS

PROFILE 2
POLYGUARD CRM
MEMBRANE FABRIC TO
CONCRETE POUR AND
ROUGHLY FIT AROUND
PENETRATION SIDEWALL.

CRH14 SECTION @ CRM MEMBRANE PENETRATION PROFILE 1 AND 2

©POLYGUARD PRODUCTS, INC.
MATERIAL SEPARATED FOR CLARITY

Polyguard Products, Inc.
P.O. Box 755 - Ennis, TX 75120
Phone: 214-515-5000
Web Site - www.polyguard.com

<small>The information provided is based on data and knowledge considered to be true and accurate and is offered for the users' consideration, investigation and verification, but we do not warrant the results to be obtained. Please read all data sheets, statements, recommendations or suggestions in conjunction with our conditions of sale, which apply to all goods supplied by us.</small>	NOT TO SCALE
	EFFECTIVE DATE: 10/01/2022
	SUPERCEDES: 02/04/2022