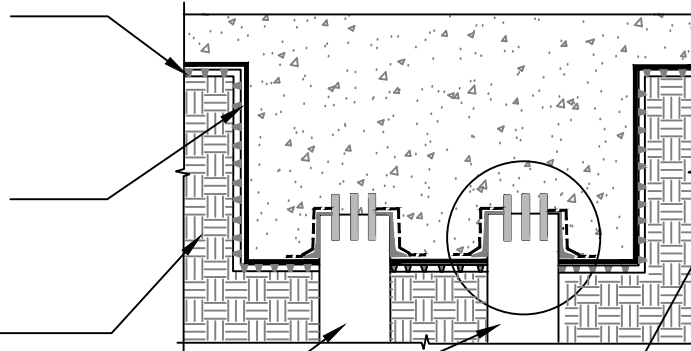


POLYGUARD POLYFLOW 18
MOLDED SHEET DRAINAGE
FABRIC TOWARD SUBSTRATE

POLYGUARD CRM MEMBRANE
FABRIC TOWARD CONCRETE
POUR

APPROVED SUBSTRATE -
BY OTHERS

EXISTING CONCRETE PILES -
BY OTHERS



POLYGUARD FABRIC TAPE APPLIED OVER
CURED POLYGUARD CR LIQUID MEMBRANE
PREPARED WITH POLYGUARD CR SEALANT
APPLIED AT A RATE OF 175 - 200 SF/GAL AND
ONTO CLEAN, DRY FABRIC OF POLYGUARD
CRM MEMBRANE PREPARED WITH
POLYGUARD CR SEALANT AT A RATE OF 50 - 75
SF/GAL

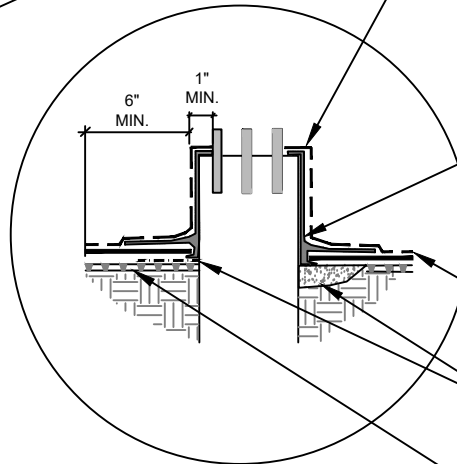
MINIMUM 90 MILS OF POLYGUARD CR LIQUID
MEMBRANE APPLIED TO SUBSTRATE
PREPARED WITH POLYGUARD CR SEALANT AT
A RATE OF 175 - 200 SF/GAL TO CLEAN, DRY
AND FROST FREE CONCRETE WITH 3/4"
MINIMUM CANT AROUND BASE OF PILE
INTERSECTION WITH POLYGUARD CRM
MEMBRANE FABRIC ENCAPSULATING
POLYGUARD CRM MEMBRANE EDGE -
PREPARE FABRIC WITH POLYGUARD CR
SEALANT AT A RATE OF 50 - 75 SF/GAL

POLYGUARD CRM MEMBRANE FIT TIGHTLY
AROUND PERIMETER OF PILE WITH FABRIC
TOWARD CONCRETE POUR

CONCRETE WELL - BY OTHERS OR
POLYGUARD CR SEAM TAPE MINIMUM 4"
RADIUS AROUND THE PENETRATION

POLYGUARD POLYFLOW 18 MOLDED SHEET
DRAINAGE FABRIC TOWARD SUBSTRATE

NOTE: WHERE THE TOP OF THE PILE
CANNOT BE USED AS A
TERMINATION AREA, INSTALL A 1"
WIDE STAINLESS STEEL BAND
CLAMP - BY OTHERS ALIGNED
ALONG THE TOP EDGE OF THE
POLYGUARD FABRIC TAPE - SEAL
TERMINATION WITH POLYGUARD
CR SEALANT AND POLYGUARD
CR LIQUID MEMBRANE



CRH3

SECTION @ PILE TERMINATION - PROFILE 1

©POLYGUARD PRODUCTS, INC.
MATERIAL SEPARATED FOR CLARITY

Polyguard Products, Inc.
P.O. Box 755 - Ennis, TX 75120
Phone: 214-515-5000
Web Site - www.polyguard.com

<small>The information provided is based on data and knowledge considered to be true and accurate and is offered for the users' consideration, investigation and verification, but we do not warrant the results to be obtained. Please read all data sheets, statements, recommendations or suggestions in conjunction with our conditions of sale, which apply to all goods supplied by us.</small>	NOT TO SCALE
	EFFECTIVE DATE: 10/01/2022
	SUPERCEDES: 02/04/2022