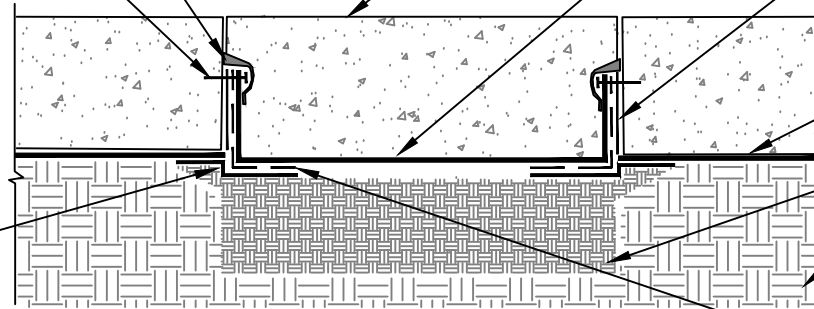


MINIMUM 90 MILS OF POLYGUARD CR LIQUID MEMBRANE APPLIED TO TOP TERMINATION - REFERENCE POLYGUARD CRM MEMBRANE TERMINATION AT EXISTING CONCRETE WALL DETAIL

TERMINATION BAR AND FASTENERS - BY OTHERS

DIG OUT AND EXPOSE POLYGUARD CRM MEMBRANE THE ENTIRE PERIMETER OF THE TRENCH A MINIMUM OF 2" PAST SAW CUTS - APPLY A 12" PIECE OF POLYGUARD CR SEAM TAPE TO CLEANED FILM SIDE OF POLYGUARD CRM MEMBRANE - LEAVING FILM ON EXPOSED SIDE OF MEMBRANE - ANCHOR TO SIDE OF TRENCH TO PROTECT MEMBRANE FROM BACKFILLING DAMAGE. ONCE BACKFILLED THEN LAY TAPED PIECE TO BOTTOM OF TRENCH AND REMOVE FILM FOR ADHESION OF POLYGUARD CR BOOT AND POLYGUARD CRM MEMBRANE

NOTE: AFTER CONCRETE IS REPLACED, SEAL CROSS SAW CUTS WITH INJECTABLE MATERIAL - BY OTHERS



REPLACEMENT CONCRETE - BY OTHERS

NEW PIECE OF POLYGUARD CRM MEMBRANE WITH FABRIC FACING CONCRETE POUR ADHERE FILM SIDE OF POLYGUARD CRM MEMBRANE TO CR SEAM TAPE

APPLY A MINIMUM 90 MILS OF POLYGUARD CR LIQUID MEMBRANE TO SUBSTRATE PREPARED WITH POLYGUARD CR SEALANT AT A RATE OF 175 - 200 SF/GAL

EXISTING POLYGUARD CRM MEMBRANE

APPROVED SUBSTRATES - BY OTHERS

PLACE POLYGUARD CR OUTSIDE CORNER BOOT ONTO TACK SIDE OF POLYGUARD CR TAPE AND INTO CORNER - TO FIELD MAKE INSIDE CORNERS REFERENCE POLYGUARD PREFORMED CORNER BOOT DETAIL

CRH6 SECTION @ SAW CUT THROUGH EXISTING SLAB

Polyguard Products, Inc.
P.O. Box 755 - Ennis, TX 75120
Phone: 214-515-5000
Web Site - www.polyguard.com

©POLYGUARD PRODUCTS, INC.
MATERIAL SEPARATED FOR CLARITY

<p>The information provided is based on data and knowledge considered to be true and accurate and is offered for the users' consideration, investigation and verification, but we do not warrant the results to be obtained. Please read all data sheets, statements, recommendations or suggestions in conjunction with our conditions of sale, which apply to all goods supplied by us.</p>	NOT TO SCALE
	EFFECTIVE DATE: 10/01/2022
	SUPERCEDES: 02/04/2022