

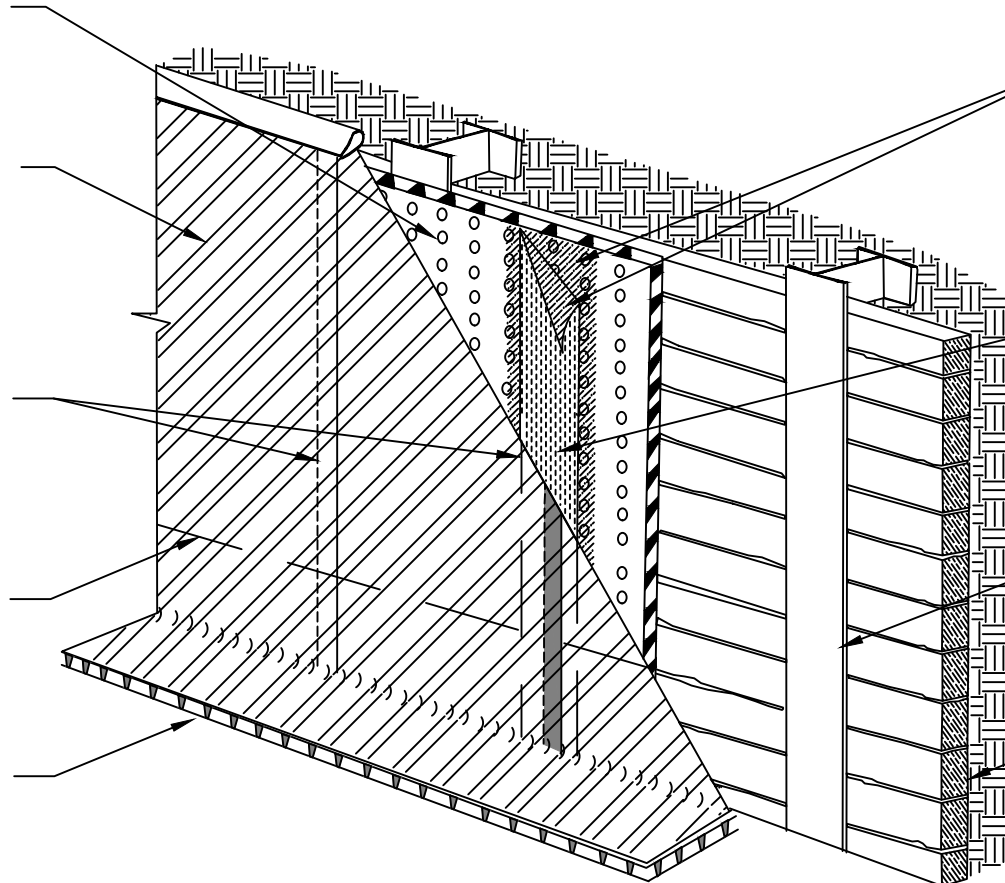
POLYGUARD
POLYFLOW 15 SHEET
MOLDED DRAIN
FABRIC FACING
RETENTION SYSTEM

POLYGUARD CRM
MEMBRANE FABRIC
FACING CONCRETE
POUR

POLYGUARD CRM
MEMBRANE 4"
FACTORY SELVEDGE
OVERLAP REFER TO
POLYGUARD
SELVEDGE LAP SEAM
DETAIL

VERTICAL LAP
REFERENCE
POLYGUARD END LAP
DETAIL

POLYGUARD
POLYFLOW 18 MOLDED
SHEET DRAIN FABRIC
TOWARD SUBSTRATE



SPRAY A 12" WIDE AREA OF
LOW RISE SPRAY ADHESIVE
ONTO DRAINBOARD AND ONTO
POLYGUARD CR SEAM TAPE
ALLOW TO FLASH OFF AND
PRESS POLYGUARD CRM
MEMBRANE AND POLYGUARD
CR SEAM TAPE INTO ADHESIVE
ON POLYGUARD POLYFLOW 15

POLYGUARD CR SEAM TAPE
APPLIED TO THE FILM SIDE OF
ALL SEAMS OF THE
POLYGUARD CRM MEMBRANE
AND PRESSED INTO THE LOW
RISE SPRAY ADHESIVE THAT
HAS BEEN APPLIED TO THE
DRAINBOARD

SOLDIER PILES AND LAGGING
- FILL GAPS GREATER THAN 2"
BETWEEN TIMBERS OR OTHER
SUBSTRATES WITH FAST SET
GROUT OR COVER WITH 1/2"
MINIMUM WOOD BASED
SHEATHING - BY OTHERS

LAGGING RETENTION SYSTEM -
BY OTHERS

SOIL RETENTION SYSTEM -
BY OTHERS



OVERVIEW @ EARTH RETENTION SYSTEM

Polyguard Products, Inc.
P.O. Box 755 - Ennis, TX 75120
Phone: 214-515-5000
Web Site - www.polyguard.com

©POLYGUARD PRODUCTS, INC.
MATERIAL SEPARATED FOR CLARITY

<p>The information provided is based on data and knowledge considered to be true and accurate and is offered for the users' consideration, investigation and verification, but we do not warrant the results to be obtained. Please read all data sheets, statements, recommendations or suggestions in conjunction with our conditions of sale, which apply to all goods supplied by us.</p>	NOT TO SCALE
	EFFECTIVE DATE: 07/15/2024
	SUPERCEDES: 10/01/2022