

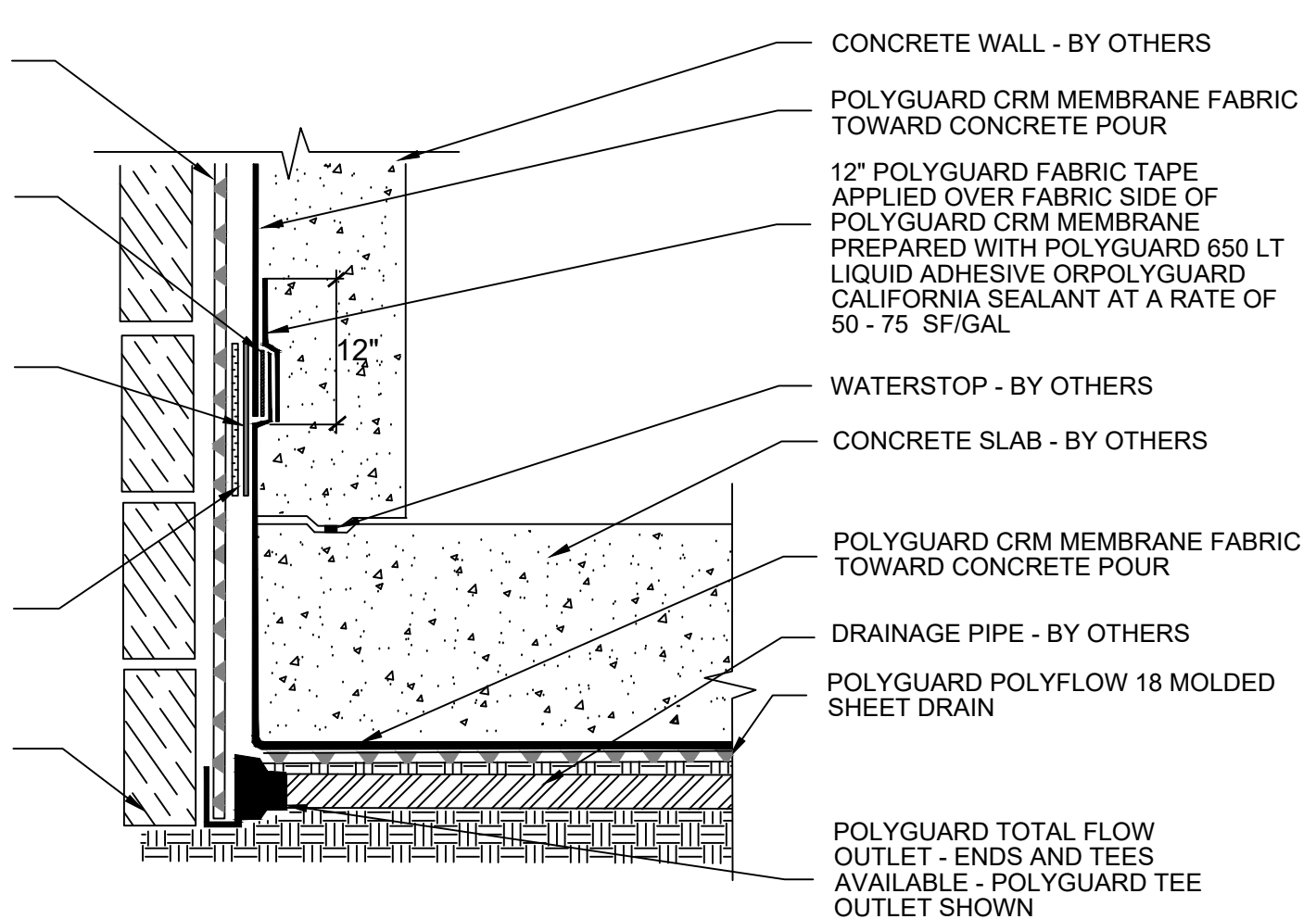
POLYGUARD POLYFLOW 15 SHEET  
MOLDED DRAIN FABRIC FACING  
RETENTION SYSTEM

MINIMUM 90 MILS OF POLYGUARD  
CR LIQUID MEMBRANE APPLIED TO  
POLYGUARD CRM MEMBRANE  
MAXIMUM 4" - PREPARE FABRIC  
WITH POLYGUARD CR SEALANT AT  
A RATE OF 50 - 75 SF/GAL

POLYGUARD CR SEAM TAPE  
APPLIED TO THE FILM SIDE OF ALL  
SEAMS OF THE POLYGUARD CRM  
MEMBRANE AND PRESSED INTO  
THE LOW RISE SPRAY ADHESIVE  
THAT HAS BEEN APPLIED TO THE  
DRAINBOARD

SPRAY A 12" WIDE AREA OF LOW  
RISE SPRAY ADHESIVE ONTO  
DRAINBOARD BEHIND POLYGUARD  
CR SEAM TAPE AND PRESS  
POLYGUARD CRM MEMBRANE AND  
POLYGUARD CR SEAM TAPE INTO  
ADHESIVE ON POLYGUARD  
POLYFLOW 15

APPROVED RETENTION SYSTEM  
- TIMBER LAGGING SHOWN - BY  
OTHERS



CONCRETE WALL - BY OTHERS

POLYGUARD CRM MEMBRANE FABRIC  
TOWARD CONCRETE POUR

12" POLYGUARD FABRIC TAPE  
APPLIED OVER FABRIC SIDE OF  
POLYGUARD CRM MEMBRANE  
PREPARED WITH POLYGUARD 650 LT  
LIQUID ADHESIVE OR POLYGUARD  
CALIFORNIA SEALANT AT A RATE OF  
50 - 75 SF/GAL

WATERSTOP - BY OTHERS

CONCRETE SLAB - BY OTHERS

POLYGUARD CRM MEMBRANE FABRIC  
TOWARD CONCRETE POUR

DRAINAGE PIPE - BY OTHERS

POLYGUARD POLYFLOW 18 MOLDED  
SHEET DRAIN

POLYGUARD TOTAL FLOW  
OUTLET - ENDS AND TEES  
AVAILABLE - POLYGUARD TEE  
OUTLET SHOWN

**CRV11**

**SECTION @ CRM MEMBRANE TIE IN TO CRM MEMBRANE**

Polyguard Products, Inc.  
P.O. Box 755 - Ennis, TX 75120  
Phone: 214-515-5000  
Web Site - www.polyguard.com

©POLYGUARD PRODUCTS, INC.  
MATERIAL SEPARATED FOR CLARITY

<p>The information provided is based on data and knowledge considered to be true and accurate and is offered for the users' consideration, investigation and verification, but we do not warrant the results to be obtained. Please read all data sheets, statements, recommendations or suggestions in conjunction with our conditions of sale, which apply to all goods supplied by us.</p>	NOT TO SCALE
	EFFECTIVE DATE: 07/15/2024
	SUPERCEDES: 10/01/2022