

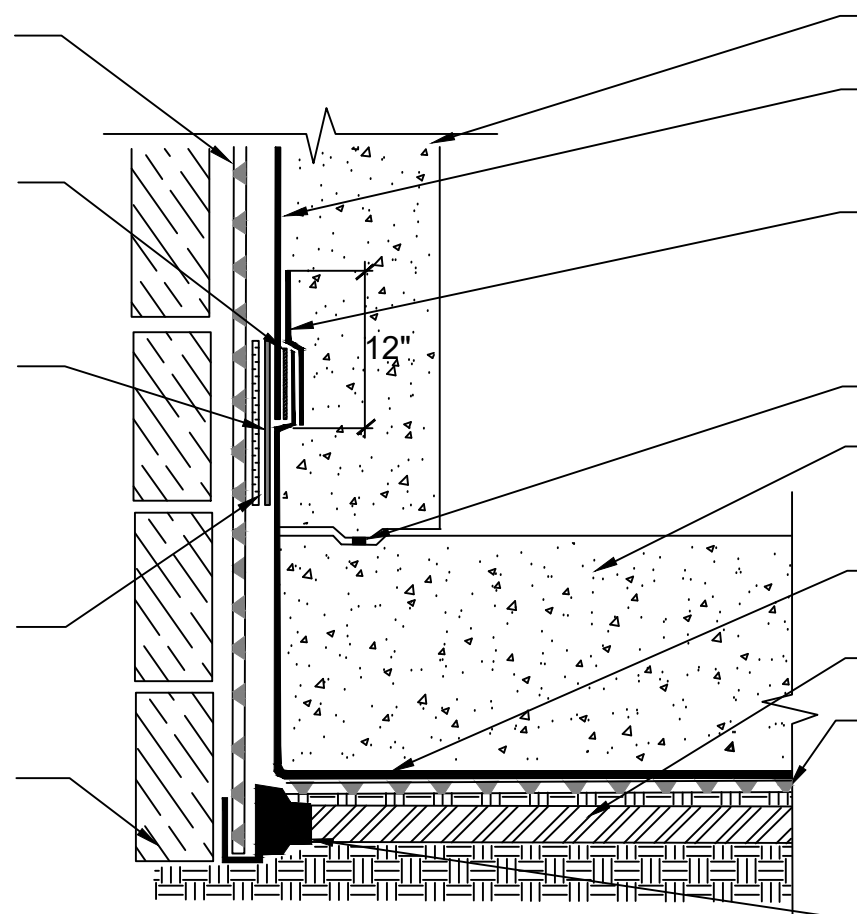
POLYGUARD POLYFLOW 15 SHEET
MOLDED DRAIN FABRIC FACING
RETENTION SYSTEM

MINIMUM 90 MILS OF POLYGUARD
CR LIQUID MEMBRANE APPLIED TO
POLYGUARD CRM MEMBRANE
MAXIMUM 4" - PREPARE FABRIC
WITH POLYGUARD CR SEALANT AT
A RATE OF 50 - 75 SF/GAL

POLYGUARD CR SEAM TAPE
APPLIED TO THE FILM SIDE OF ALL
SEAMS OF THE POLYGUARD CRM
MEMBRANE AND PRESSED INTO
THE LOW RISE SPRAY ADHESIVE
THAT HAS BEEN APPLIED TO THE
DRAINBOARD

SPRAY A 12" WIDE AREA OF LOW
RISE SPRAY ADHESIVE ONTO
DRAINBOARD BEHIND POLYGUARD
CR SEAM TAPE AND PRESS
POLYGUARD CRM MEMBRANE AND
POLYGUARD CR SEAM TAPE INTO
ADHESIVE ON POLYGUARD
POLYFLOW 15

APPROVED RETENTION SYSTEM
- TIMBER LAGGING SHOWN - BY
OTHERS



CONCRETE WALL - BY OTHERS

POLYGUARD CRM MEMBRANE FABRIC
TOWARD CONCRETE POUR

12" POLYGUARD FABRIC TAPE
APPLIED OVER FABRIC SIDE OF
POLYGUARD CRM MEMBRANE
PREPARED WITH POLYGUARD 650 LT
LIQUID ADHESIVE OR POLYGUARD
CALIFORNIA SEALANT AT A RATE OF
50 - 75 SF/GAL

WATERSTOP - BY OTHERS

CONCRETE SLAB - BY OTHERS

POLYGUARD CRM MEMBRANE FABRIC
TOWARD CONCRETE POUR

DRAINAGE PIPE - BY OTHERS

POLYGUARD POLYFLOW 18 MOLDED
SHEET DRAIN

POLYGUARD TOTAL FLOW
OUTLET - ENDS AND TEES
AVAILABLE - POLYGUARD TEE
OUTLET SHOWN

CRV11

SECTION @ CRM MEMBRANE TIE IN TO CRM MEMBRANE

Polyguard Products, Inc.
P.O. Box 755 - Ennis, TX 75120
Phone: 214-515-5000
Web Site - www.polyguard.com

©POLYGUARD PRODUCTS, INC.
MATERIAL SEPARATED FOR CLARITY

<small>The information provided is based on data and knowledge considered to be true and accurate and is offered for the users' consideration, investigation and verification, but we do not warrant the results to be obtained. Please read all data sheets, statements, recommendations or suggestions in conjunction with our conditions of sale, which apply to all goods supplied by us.</small>	NOT TO SCALE
	EFFECTIVE DATE: 10/01/2022
	SUPERCEDES: 01/09/2017