

TOPPING SLAB - BY OTHERS

POLYGUARD POLYFLOW 18
DRAINAGE COMPOSITE AS
REQUIRED

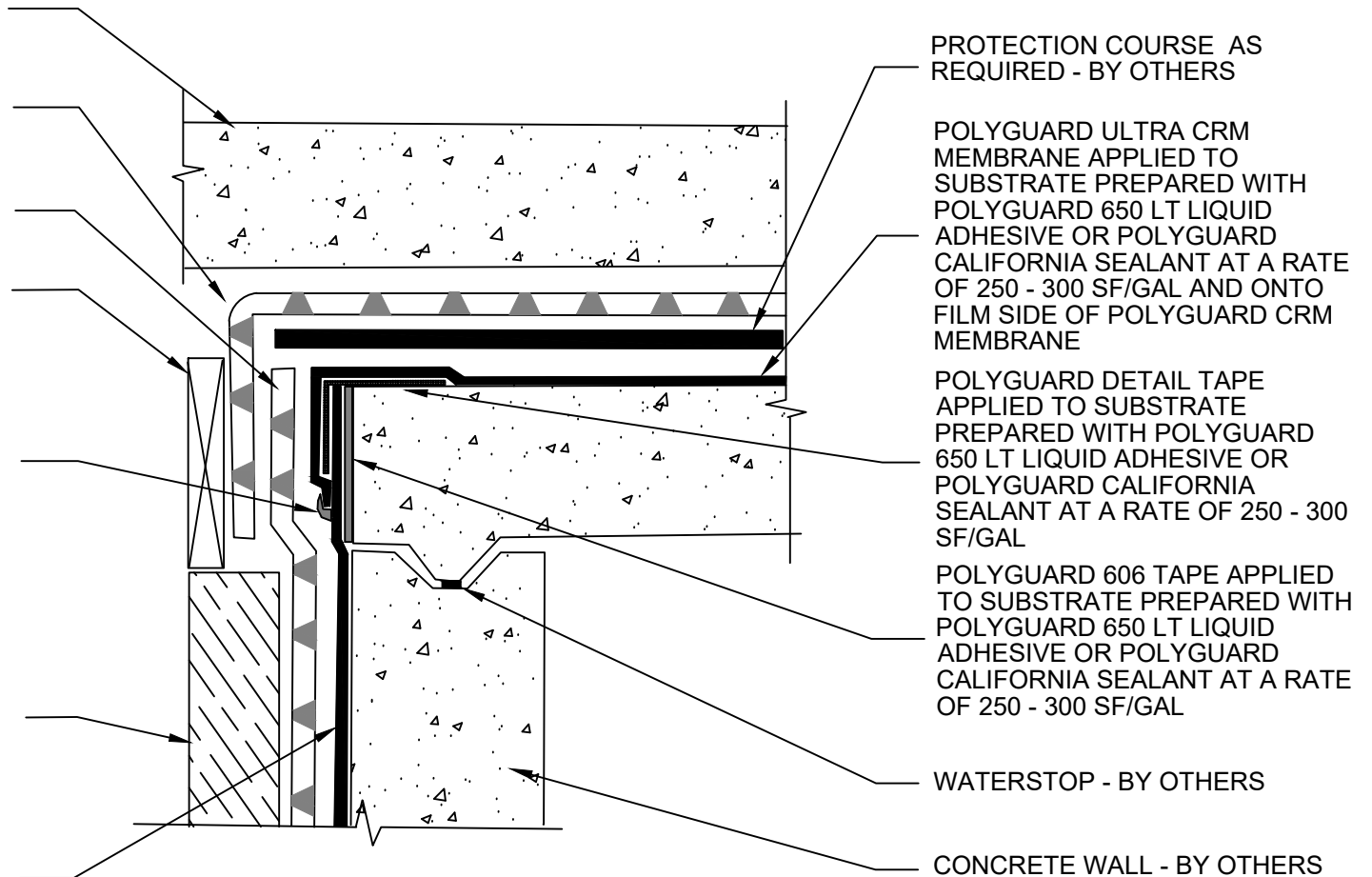
POLYGUARD POLYFLOW 15
SHEET MOLDED DRAIN FABRIC
FACING RETENTION SYSTEM

TEMPORARY FORM (REMOVE
FOR TIE IN) - BY OTHERS

MINIMUM 90 MILS OF POLYGUARD
CR LIQUID MEMBRANE
EXTENDED A MINIMUM OF 1/2" TO
EACH SIDE OF THE TERMINAL
EDGE APPLIED TO HDPE
PREPARED WITH POLYGUARD CR
SEALANT AT A RATE OF 50 - 75
SF/GAL OR USE POLYGUARD CR
SEAM TAPE CENTERED OVER
TERMINATION.

APPROVED RETENTION SYSTEM
- TIMBER LAGGING SHOWN - BY
OTHERS

POLYGUARD CRM MEMBRANE
APPLIED OVER POLYGUARD 606
TAPE - PREPARE FABRIC OF
POLYGUARD CRM MEMBRANE
WITH POLYGUARD CR SEALANT
AT A RATE OF 50 - 75 SF/GAL



PROTECTION COURSE AS
REQUIRED - BY OTHERS

POLYGUARD ULTRA CRM
MEMBRANE APPLIED TO
SUBSTRATE PREPARED WITH
POLYGUARD 650 LT LIQUID
ADHESIVE OR POLYGUARD
CALIFORNIA SEALANT AT A RATE
OF 250 - 300 SF/GAL AND ONTO
FILM SIDE OF POLYGUARD CRM
MEMBRANE

POLYGUARD DETAIL TAPE
APPLIED TO SUBSTRATE
PREPARED WITH POLYGUARD
650 LT LIQUID ADHESIVE OR
POLYGUARD CALIFORNIA
SEALANT AT A RATE OF 250 - 300
SF/GAL

POLYGUARD 606 TAPE APPLIED
TO SUBSTRATE PREPARED WITH
POLYGUARD 650 LT LIQUID
ADHESIVE OR POLYGUARD
CALIFORNIA SEALANT AT A RATE
OF 250 - 300 SF/GAL

WATERSTOP - BY OTHERS

CONCRETE WALL - BY OTHERS

CRV12 SECTION @ CRM MEMBRANE TIE IN TO ULTRA CRM MEMBRANE

The information provided is based on data and knowledge considered to be true and accurate and is offered for the users' consideration, investigation and verification, but we do not warrant the results to be obtained. Please read all data sheets, statements, recommendations or suggestions in conjunction with our conditions of sale, which apply to all goods supplied by us.	NOT TO SCALE
	EFFECTIVE DATE: 07/15/2024
	SUPERCEDES: 10/01/2022