

TOPPING SLAB - BY OTHERS

POLYGUARD POLYFLOW 18  
DRAINAGE COMPOSITE AS  
REQUIRED

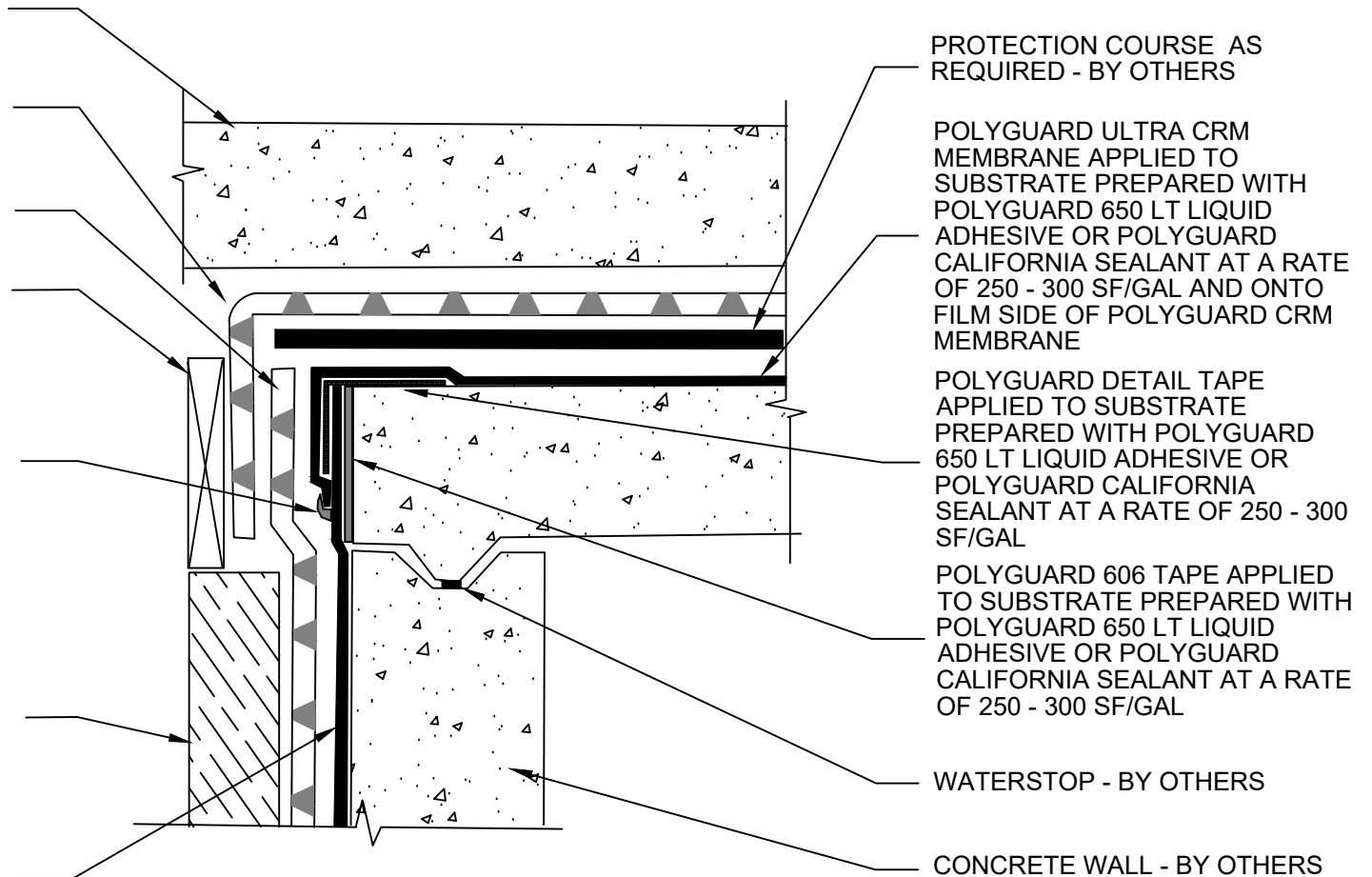
POLYGUARD POLYFLOW 15  
SHEET MOLDED DRAIN FABRIC  
FACING RETENTION SYSTEM

TEMPORARY FORM (REMOVE  
FOR TIE IN) - BY OTHERS

MINIMUM 90 MILS OF POLYGUARD  
CR LIQUID MEMBRANE  
EXTENDED A MINIMUM OF 1/2" TO  
EACH SIDE OF THE TERMINAL  
EDGE APPLIED TO HDPE  
PREPARED WITH POLYGUARD CR  
SEALANT AT A RATE OF 50 - 75  
SF/GAL OR USE POLYGUARD CR  
SEAM TAPE CENTERED OVER  
TERMINATION.

APPROVED RETENTION SYSTEM  
- TIMBER LAGGING SHOWN - BY  
OTHERS

POLYGUARD CRM MEMBRANE  
APPLIED OVER POLYGUARD 606  
TAPE - PREPARE FABRIC OF  
POLYGUARD CRM MEMBRANE  
WITH POLYGUARD CR SEALANT  
AT A RATE OF 50 - 75 SF/GAL



PROTECTION COURSE AS  
REQUIRED - BY OTHERS

POLYGUARD ULTRA CRM  
MEMBRANE APPLIED TO  
SUBSTRATE PREPARED WITH  
POLYGUARD 650 LT LIQUID  
ADHESIVE OR POLYGUARD  
CALIFORNIA SEALANT AT A RATE  
OF 250 - 300 SF/GAL AND ONTO  
FILM SIDE OF POLYGUARD CRM  
MEMBRANE

POLYGUARD DETAIL TAPE  
APPLIED TO SUBSTRATE  
PREPARED WITH POLYGUARD  
650 LT LIQUID ADHESIVE OR  
POLYGUARD CALIFORNIA  
SEALANT AT A RATE OF 250 - 300  
SF/GAL

POLYGUARD 606 TAPE APPLIED  
TO SUBSTRATE PREPARED WITH  
POLYGUARD 650 LT LIQUID  
ADHESIVE OR POLYGUARD  
CALIFORNIA SEALANT AT A RATE  
OF 250 - 300 SF/GAL

WATERSTOP - BY OTHERS

CONCRETE WALL - BY OTHERS

**CRV12** SECTION @ CRM MEMBRANE TIE IN TO ULTRA CRM MEMBRANE

Polyguard Products, Inc.  
P.O. Box 755 - Ennis, TX 75120  
Phone: 214-515-5000  
Web Site - www.polyguard.com

©POLYGUARD PRODUCTS, INC.  
MATERIAL SEPARATED FOR CLARITY

<p>The information provided is based on data and knowledge considered to be true and accurate and is offered for the users' consideration, investigation and verification, but we do not warrant the results to be obtained. Please read all data sheets, statements, recommendations or suggestions in conjunction with our conditions of sale, which apply to all goods supplied by us.</p>	NOT TO SCALE
	EFFECTIVE DATE: 10/01/2022
	SUPERCEDES: 01/09/2017