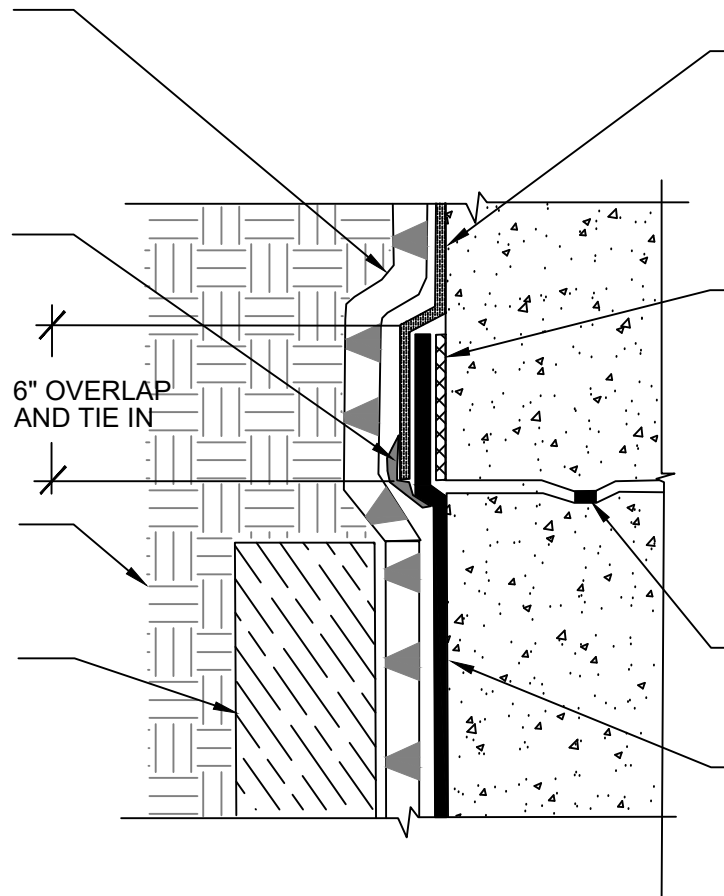


POLYGUARD POLYFLOW 15 SHEET MOLDED DRAINAGE - FABRIC FACING RETENTION SYSTEM AND BACKFILL

MINIMUM 90 MILS OF POLYGUARD CR LIQUID MEMBRANE EXTENDED A MINIMUM OF 1/2" TO EACH SIDE OF THE TERMINAL EDGE APPLIED TO HDPE PREPARED WITH POLYGUARD CR SEALANT AT A RATE OF 50 - 75 SF/GAL OR USE POLYGUARD CR SEAM TAPE CENTERED OVER TERMINATION

SOIL - BY OTHERS

RETENTION SYSTEM - WOOD LAGGING SHOWN - BY OTHERS



POLYGUARD ULTRA CRM MEMBRANE APPLIED TO CLEAN, DRY, FROST FREE SUBSTRATE PREPARED WITH POLYGUARD 650 LT LIQUID ADHESIVE OR POLYGUARD CALIFORNIA SEALANT AT A RATE OF 250 - 300 SF/GAL AND ONTO EXISTING POLYGUARD CRM MEMBRANE MINIMUM OF 6"

POLYGUARD 606 TAPE APPLIED TO CLEAN, DRY, FROST FREE SUBSTRATE PREPARED WITH POLYGUARD 650 LT LIQUID ADHESIVE OR POLYGUARD CALIFORNIA SEALANT AT A RATE OF 250 - 300 SF/GAL

WATERSTOP - BY OTHERS

POLYGUARD CRM MEMBRANE FABRIC TOWARD CONCRETE POUR - FOLD BACK TOP FLAP AND PREPARE WITH POLYGUARD 650 LT LIQUID ADHESIVE OR POLYGUARD CALIFORNIA SEALANT AT A RATE OF 50 - 75 SF/GAL PRIOR TO APPLYING OVER POLYGUARD 606 TAPE

**CRV13**

**SECTION @ VERTICAL TERMINATION ULTRA CRM MEMBRANE TO CRM MEMBRANE**

Polyguard Products, Inc.  
P.O. Box 755 - Ennis, TX 75120  
Phone: 214-515-5000  
Web Site - www.polyguard.com

©POLYGUARD PRODUCTS, INC.  
MATERIAL SEPARATED FOR CLARITY

|   |                               |
|---|-------------------------------|
| <small>The information provided is based on data and knowledge considered to be true and accurate and is offered for the users' consideration, investigation and verification, but we do not warrant the results to be obtained. Please read all data sheets, statements, recommendations or suggestions in conjunction with our conditions of sale, which apply to all goods supplied by us.</small> | NOT TO SCALE                  |
|   | EFFECTIVE DATE:<br>10/01/2022 |
|   | SUPERCEDES:<br>05/19/2016     |