

SPRAY A 12" WIDE AREA OF LOW RISE SPRAY ADHESIVE ONTO DRAINBOARD AND ONTO POLYGUARD CR SEAM TAPE ALLOW TO FLASH OFF AND PRESS POLYGUARD CRM MEMBRANE AND POLYGUARD CR SEAM TAPE INTO ADHESIVE ON POLYGUARD POLYFLOW 15

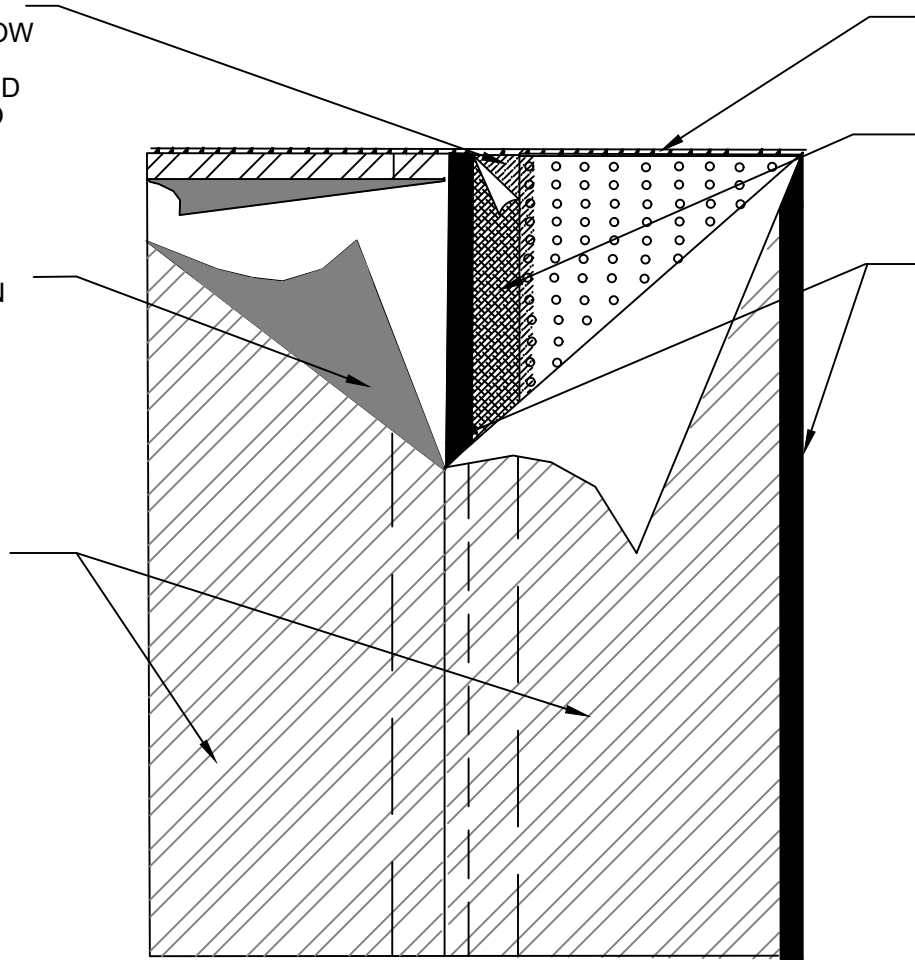
PROTECTIVE PACKAGING FILM REMOVED DURING INSTALLATION

POLYGUARD CR FABRIC TOWARD CONCRETE POUR

POLYGUARD POLYFLOW 15 SHEET MOLDED DRAIN - FABRIC FACING RETENTION SYSTEM

POLYGUARD CR SEAM TAPE APPLIED TO FILM SIDE OF POLYGUARD CRM MEMBRANE SEAM

4" FACTORY SELVEDGE EDGE WITH PROTECTIVE RELEASE FILM COVERING



**OVERVIEW @ 4" SELVEDGE LAP SEAM**

Polyguard Products, Inc.  
P.O. Box 755 - Ennis, TX 75120  
Phone: 214-515-5000  
Web Site - [www.polyguard.com](http://www.polyguard.com)

©POLYGUARD PRODUCTS, INC.  
MATERIAL SEPARATED FOR CLARITY

<small>The information provided is based on data and knowledge considered to be true and accurate and is offered for the users' consideration, investigation and verification, but we do not warrant the results to be obtained. Please read all data sheets, statements, recommendations or suggestions in conjunction with our conditions of sale, which apply to all goods supplied by us.</small>	NOT TO SCALE
	EFFECTIVE DATE: 07/15/2024
	SUPERCEDES: 10/01/2022