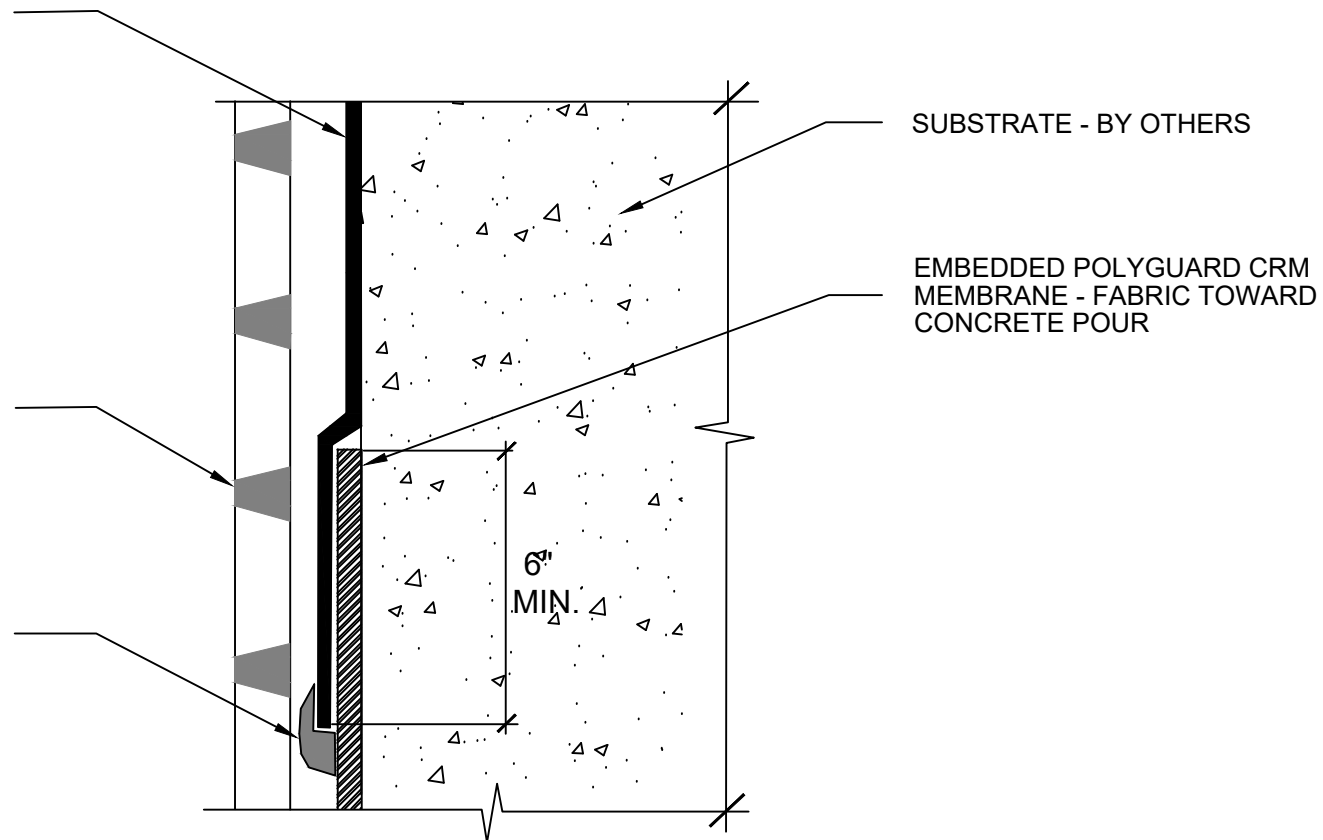


POLYGUARD ULTRA CRM APPLIED TO CLEAN, DRY, FROST FREE SUBSTRATE PREPARED WITH POLYGUARD 650 LT LIQUID ADHESIVE OR POLYGUARD CALIFORNIA SEALANT AT A RATE OF 250 - 300 SF/GAL AND OVER EMBEDDED POLYGUARD CRM MEMBRANE A MINIMUM OF 6"

POLYGUARD POLYFLOW 15 SHEET MOLDED DRAIN FABRIC TOWARD SOIL

90 MILS MINIMUM POLYGUARD CR LIQUID MEMBRANE APPLIED TO TERMINAL EDGE OF POLYGUARD ULTRA CRM MEMBRANE AND ONTO EACH SIDE OF THE EDGE A MINIMUM OF 3/4" PREPARED WITH POLYGUARD CR SEALANT AT A RATE OF 175 - 200 SF/GAL OR APPLY 12" STRIP OF POLYGUARD CR SEAM TAPE CENTERED OVER TERMINATED EDGE



**OVERVIEW @ EMBEDDED CRM MEMBRANE TIE IN TO ULTRA CRM MEMBRANE**

Polyguard Products, Inc.  
P.O. Box 755 - Ennis, TX 75120  
Phone: 214-515-5000  
Web Site - [www.polyguard.com](http://www.polyguard.com)

©POLYGUARD PRODUCTS, INC.  
MATERIAL SEPARATED FOR CLARITY

<small>The information provided is based on data and knowledge considered to be true and accurate and is offered for the users' consideration, investigation and verification, but we do not warrant the results to be obtained. Please read all data sheets, statements, recommendations or suggestions in conjunction with our conditions of sale, which apply to all goods supplied by us.</small>	NOT TO SCALE
	EFFECTIVE DATE: 07/15/2024
	SUPERCEDES: 10/01/2022