

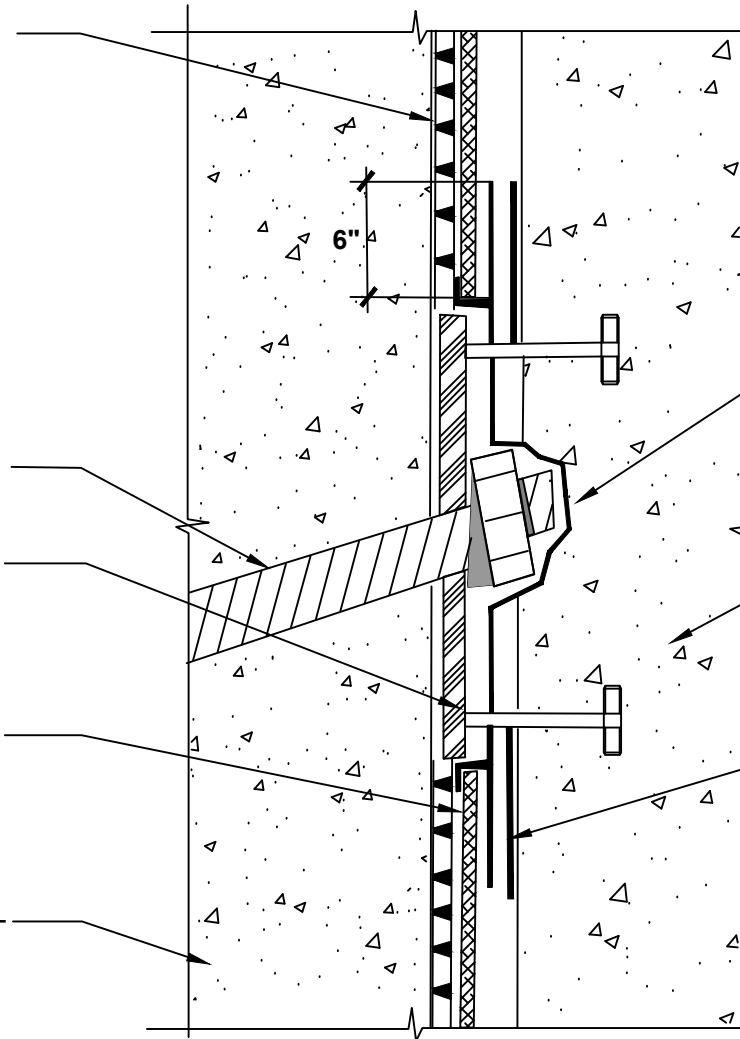
POLYGUARD POLYFLOW 15
DRAINAGE MAT - FABRIC
TOWARD SHOTCRETE
RETENTION SYSTEM

SOIL NAIL - BY OTHERS

STUD PLATE AND NELSON STUD
- BY OTHERS

FIELD SHEET OF CRM MEMBRANE
FABRIC FACING CONCRETE
STRUCTURAL WALL -
ENCAPSULATE EDGE IN WET
POLYGUARD CR LIQUID
MEMBRANE

SHOTCRETE RETENTION SYSTEM -
BY OTHERS



POLYGUARD CR LIQUID MEMBRANE
APPLIED OVER SOIL NAIL AND PLATE
AND ONTO POLYGUARD CRM
MEMBRANE A MINIMUM OF 6" -
PREPARE PLATE AND FABRIC OF
POLYGUARD CRM MEMBRANE WITH
POLYGUARD CR SEALANT AT A RATE
OF 50 - 75 SF/GAL

STRUCTURAL CONCRETE WALL - BY
OTHERS

POLYGUARD FABRIC TAPE APPLIED
OVER CURED POLYGUARD CR LIQUID
MEMBRANE PREPARED WITH
POLYGUARD CR SEALANT AT A RATE
OF 250 - 300 SF/GAL



OVERVIEW @ SOIL NAIL / STUD PLATE CONDITION

Polyguard Products, Inc.
P.O. Box 755 - Ennis, TX 75120
Phone: 214-515-5000
Web Site - www.polyguard.com

©POLYGUARD PRODUCTS, INC.
MATERIAL SEPARATED FOR CLARITY

<small>The information provided is based on data and knowledge considered to be true and accurate and is offered for the users' consideration, investigation and verification, but we do not warrant the results to be obtained. Please read all data sheets, statements, recommendations or suggestions in conjunction with our conditions of sale, which apply to all goods supplied by us.</small>	NOT TO SCALE
	EFFECTIVE DATE: 07/15/2024
	SUPERCEDES: 10/01/2022