

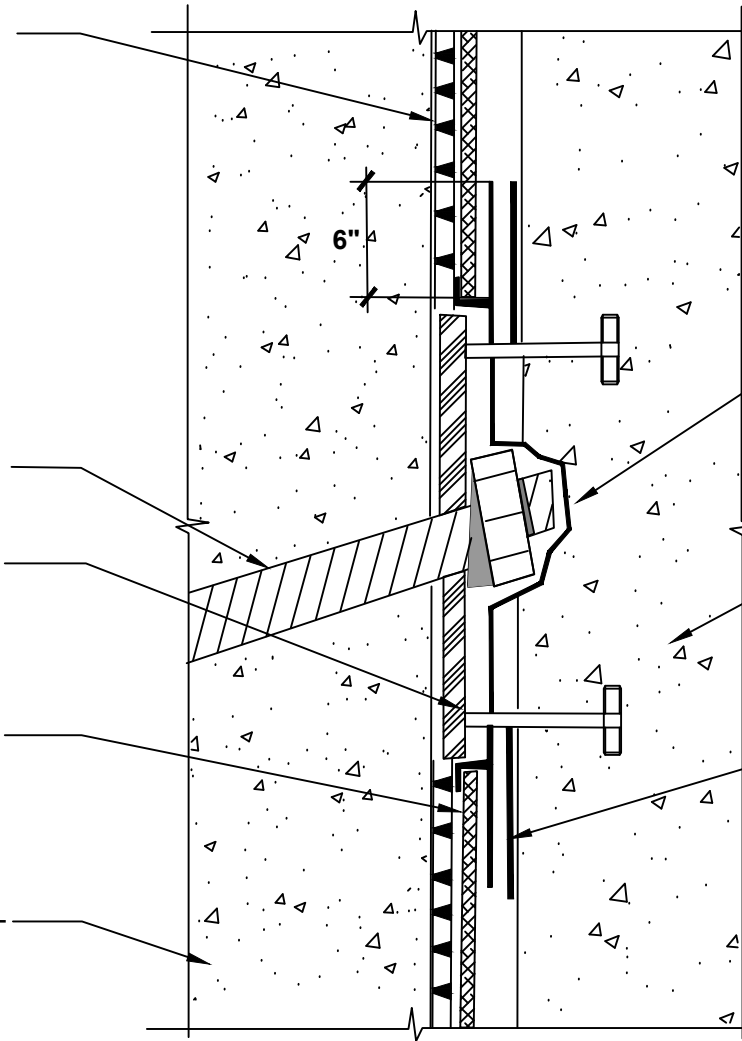
POLYGUARD POLYFLOW 15  
DRAINAGE MAT - FABRIC  
TOWARD SHOTCRETE  
RETENTION SYSTEM

SOIL NAIL - BY OTHERS

STUD PLATE AND NELSON STUD  
- BY OTHERS

FIELD SHEET OF CRM MEMBRANE  
FABRIC FACING CONCRETE  
STRUCTURAL WALL -  
ENCAPSULATE EDGE IN WET  
POLYGUARD CR LIQUID  
MEMBRANE

SHOTCRETE RETENTION SYSTEM -  
BY OTHERS



POLYGUARD CR LIQUID MEMBRANE  
APPLIED OVER SOIL NAIL AND PLATE  
AND ONTO POLYGUARD CRM  
MEMBRANE A MINIMUM OF 6" -  
PREPARE PLATE AND FABRIC OF  
POLYGUARD CRM MEMBRANE WITH  
POLYGUARD CR SEALANT AT A RATE  
OF 50 - 75 SF/GAL

STRUCTURAL CONCRETE WALL - BY  
OTHERS

POLYGUARD FABRIC TAPE APPLIED  
OVER CURED POLYGUARD CR LIQUID  
MEMBRANE PREPARED WITH  
POLYGUARD CR SEALANT AT A RATE  
OF 250 - 300 SF/GAL

**CRV5**

**OVERVIEW @ SOIL NAIL / STUD PLATE CONDITION**

©POLYGUARD PRODUCTS, INC.  
MATERIAL SEPARATED FOR CLARITY

Polyguard Products, Inc.  
P.O. Box 755 - Ennis, TX 75120  
Phone: 214-515-5000  
Web Site - www.polyguard.com

<small>The information provided is based on data and knowledge considered to be true and accurate and is offered for the users' consideration, investigation and verification, but we do not warrant the results to be obtained. Please read all data sheets, statements, recommendations or suggestions in conjunction with our conditions of sale, which apply to all goods supplied by us.</small>	NOT TO SCALE
	EFFECTIVE DATE: 10/01/2022
	SUPERCEDES: 03/14/2017