

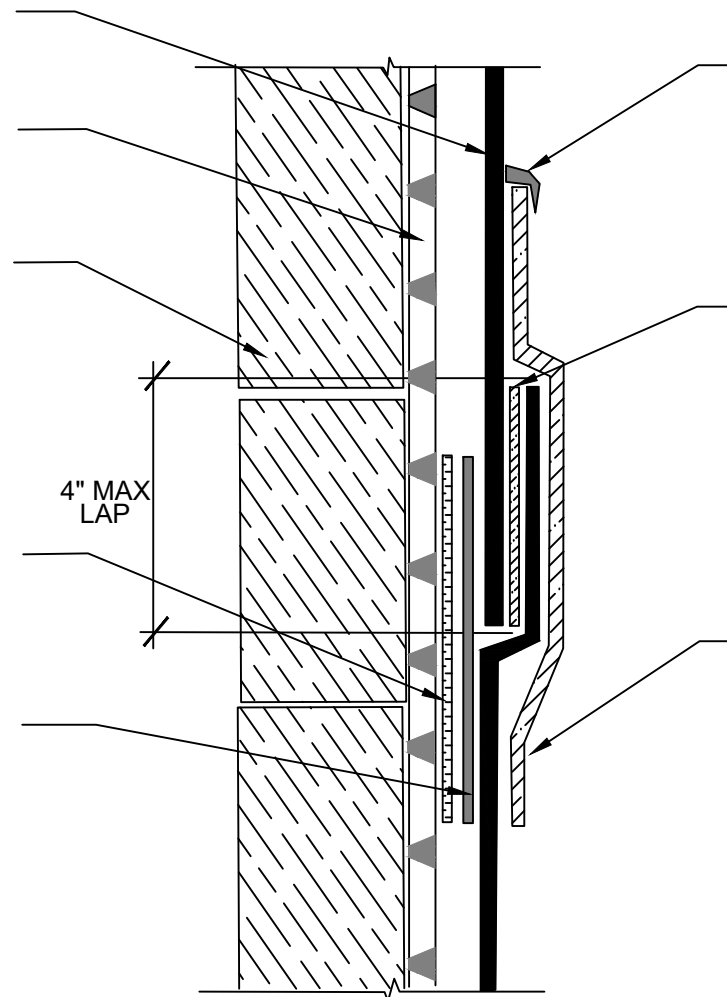
POLYGUARD CRM MEMBRANE FABRIC FACING CONCRETE POUR

POLYGUARD POLYFLOW 15 MOLDED DRAINAGE BOARD - FABRIC FACING RETENTION SYSTEM

RETENTION SYSTEM - WOOD LAGGING SHOWN - BY OTHERS

SPRAY A 12" WIDE AREA OF LOW RISE SPRAY ADHESIVE ONTO DRAINBOARD AND ONTO POLYGUARD CR SEAM TAPE ALLOW TO FLASH OFF AND PRESS POLYGUARD CRM MEMBRANE AND POLYGUARD CR SEAM TAPE INTO ADHESIVE ON POLYGUARD POLYFLOW 15

POLYGUARD CR SEAM TAPE APPLIED TO THE FILM SIDE OF ALL SEAMS OF THE POLYGUARD CRM MEMBRANE AND PRESSED INTO THE LOW RISE SPRAY ADHESIVE THAT HAS BEEN APPLIED TO THE DRAINBOARD



COVERING BEAD OF POLYGUARD DETAIL SEALANT PW OR POLYGUARD LM-95 APPLIED TO FABRIC OF POLYGUARD BLINDSIDE MEMBRANE. PREPARE FABRIC BEING COVERED WITH POLYGUARD 650 LT LIQUID ADHESIVE OR POLYGUARD CALIFORNIA SEALANT AT A RATE OF 50 - 75 SF/GAL

MINIMUM 90 MILS OF POLYGUARD CR LIQUID MEMBRANE APPLIED TO POLYGUARD CRM MEMBRANE MAXIMUM 4" - PREPARE FABRIC WITH POLYGUARD CR SEALANT APPLIED AT A RATE OF 50 -75 SF/GAL

12" STRIP OF POLYGUARD FABRIC TAPE CENTERED AND ADHERED ACROSS THE ENDLAP SEAM - EXTEND TO 6" BEYOND EACH SIDE SEAM OF ENDLAP - PREPARE FABRIC BEING COVERED WITH POLYGUARD 650 LT LIQUID ADHESIVE OR POLYGUARD CALIFORNIA SEALANT APPLIED AT A RATE OF 50 - 75 SF/GAL



SECTION @ CRM MEMBRANE END LAP IN CENTER OF LIFT

Polyguard Products, Inc.
P.O. Box 755 - Ennis, TX 75120
Phone: 214-515-5000
Web Site - www.polyguard.com

©POLYGUARD PRODUCTS, INC.
MATERIAL SEPARATED FOR CLARITY

<p>The information provided is based on data and knowledge considered to be true and accurate and is offered for the users' consideration, investigation and verification, but we do not warrant the results to be obtained. Please read all data sheets, statements, recommendations or suggestions in conjunction with our conditions of sale, which apply to all goods supplied by us.</p>	NOT TO SCALE
	EFFECTIVE DATE: 07/15/2024
	SUPERCEDES: 10/01/2022