

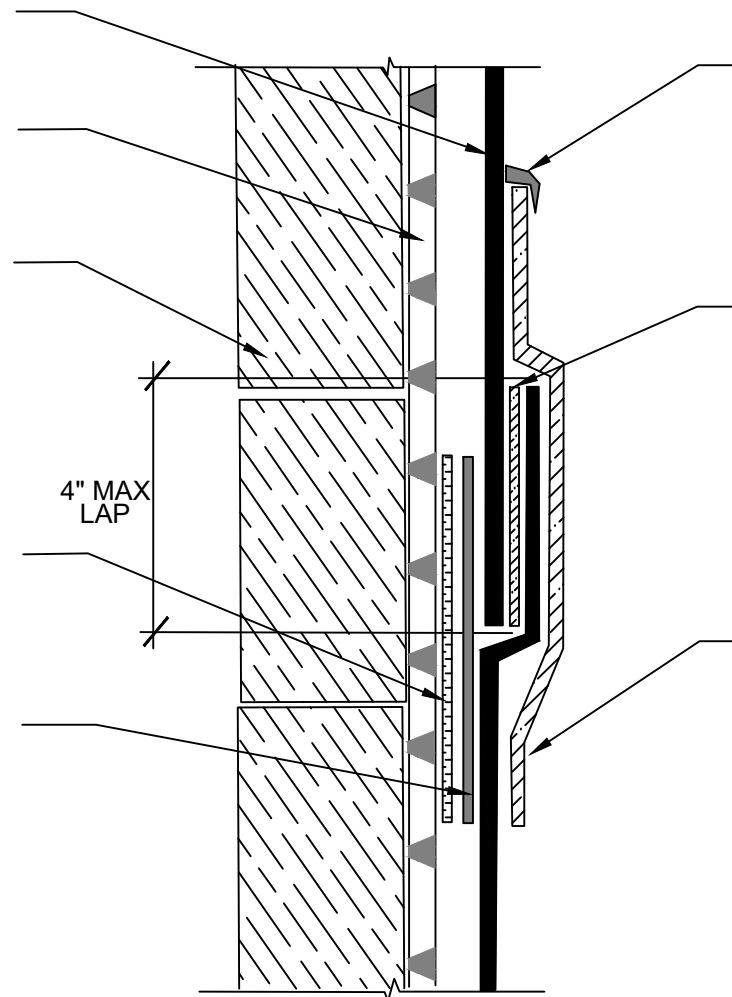
POLYGUARD CRM MEMBRANE FABRIC
FACING CONCRETE POUR

POLYGUARD POLYFLOW 15 MOLDED
DRAINAGE BOARD - FABRIC FACING
RETENTION SYSTEM

RETENTION SYSTEM - WOOD LAGGING
SHOWN - BY OTHERS

SPRAY A 12" WIDE AREA OF LOW RISE
SPRAY ADHESIVE ONTO DRAINBOARD
AND ONTO POLYGUARD CR SEAM
TAPE ALLOW TO FLASH OFF AND
PRESS POLYGUARD CRM MEMBRANE
AND POLYGUARD CR SEAM TAPE
INTO ADHESIVE ON POLYGUARD
POLYFLOW 15

POLYGUARD CR SEAM TAPE APPLIED TO
THE FILM SIDE OF ALL SEAMS OF THE
POLYGUARD CRM MEMBRANE AND
PRESSED INTO THE LOW RISE SPRAY
ADHESIVE THAT HAS BEEN APPLIED TO
THE DRAINBOARD



COVERING BEAD OF POLYGUARD DETAIL
SEALANT PW OR POLYGUARD LM-95
APPLIED TO FABRIC OF POLYGUARD
BLINDSIDE MEMBRANE. PREPARE FABRIC
BEING COVERED WITH POLYGUARD 650 LT
LIQUID ADHESIVE OR POLYGUARD
CALIFORNIA SEALANT AT A RATE OF 50 - 75
SF/GAL

MINIMUM 90 MILS OF POLYGUARD CR
LIQUID MEMBRANE APPLIED TO
POLYGUARD CRM MEMBRANE MAXIMUM 4"
- PREPARE FABRIC WITH POLYGUARD CR
SEALANT APPLIED AT A RATE OF 50 -75
SF/GAL

12" STRIP OF POLYGUARD FABRIC TAPE
CENTERED AND ADHERED ACROSS THE
ENDLAP SEAM - EXTEND TO 6" BEYOND
EACH SIDE SEAM OF ENDLAP - PREPARE
FABRIC BEING COVERED WITH
POLYGUARD 650 LT LIQUID ADHESIVE OR
POLYGUARD CALIFORNIA SEALANT
APPLIED AT A RATE OF 50 - 75 SF/GAL



SECTION @ CRM MEMBRANE END LAP IN CENTER OF LIFT

Polyguard Products, Inc.
P.O. Box 755 - Ennis, TX 75120
Phone: 214-515-5000
Web Site - www.polyguard.com

©POLYGUARD PRODUCTS, INC.
MATERIAL SEPARATED FOR CLARITY

<p>The information provided is based on data and knowledge considered to be true and accurate and is offered for the users' consideration, investigation and verification, but we do not warrant the results to be obtained. Please read all data sheets, statements, recommendations or suggestions in conjunction with our conditions of sale, which apply to all goods supplied by us.</p>	NOT TO SCALE
	EFFECTIVE DATE: 10/01/2022
	SUPERCEDES: 01/09/2017