

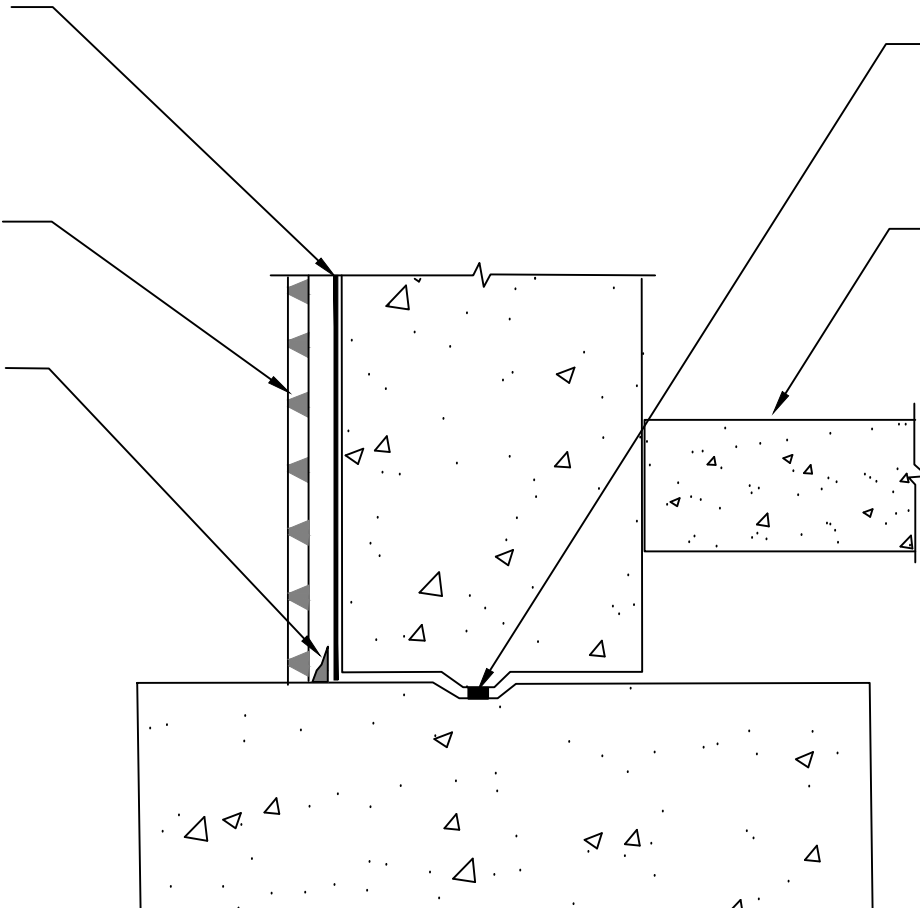
POLYGUARD PRM MEMBRANE  
APPLIED TO SUBSTRATE  
PREPARED WITH POLYGUARD  
650 LT LIQUID ADHESIVE OR  
POLYGUARD CALIFORNIA  
SEALANT AT A RATE OF 250 - 300  
SF/GAL OR POLYGUARD 650 WB  
LIQUID ADHESIVE AT A RATE OF  
350 - 400 SF/GAL

POLYGUARD POLYFLOW 15 /15P  
SHEET MOLDED DRAIN FABRIC  
FACING BACKFILL

POLYGUARD DETAIL SEALANT  
PW OR POLYGUARD LM-95  
APPLIED TO TERMINAL EDGE OF  
MEMBRANE

WATERSTOP PER MANUFACTURES  
RECOMMENDATION - BY OTHERS

TOP OF INTERIOR FLOOR HEIGHT IS  
GREATER THAN 12" ABOVE TOP OF  
FOOTER



**PRM10**

**SECTION @ TOP OF INTERIOR FLOOR GREATER THAN 12" FROM TOP OF FOOTER**

Polyguard Products, Inc.  
P.O. Box 755 - Ennis, TX 75120  
Phone: 214-515-5000  
Web Site - www.polyguard.com

**SPECIAL NOTE: IF ADHESIVE IS REQUIRED FOR  
SEAMS OR ENDLAPS DO NOT USE POLYGUARD  
650 WB LIQUID ADHESIVE**

©POLYGUARD PRODUCTS, INC.  
MATERIAL SEPARATED FOR CLARITY

<small>The information provided is based on data and knowledge considered to be true and accurate and is offered for the users' consideration, investigation and verification, but we do not warrant the results to be obtained. Please read all data sheets, statements, recommendations or suggestions in conjunction with our conditions of sale, which apply to all goods supplied by us.</small>	NOT TO SCALE
	EFFECTIVE DATE: 07/15/2024
	SUPERCEDES: 05/05/2022