

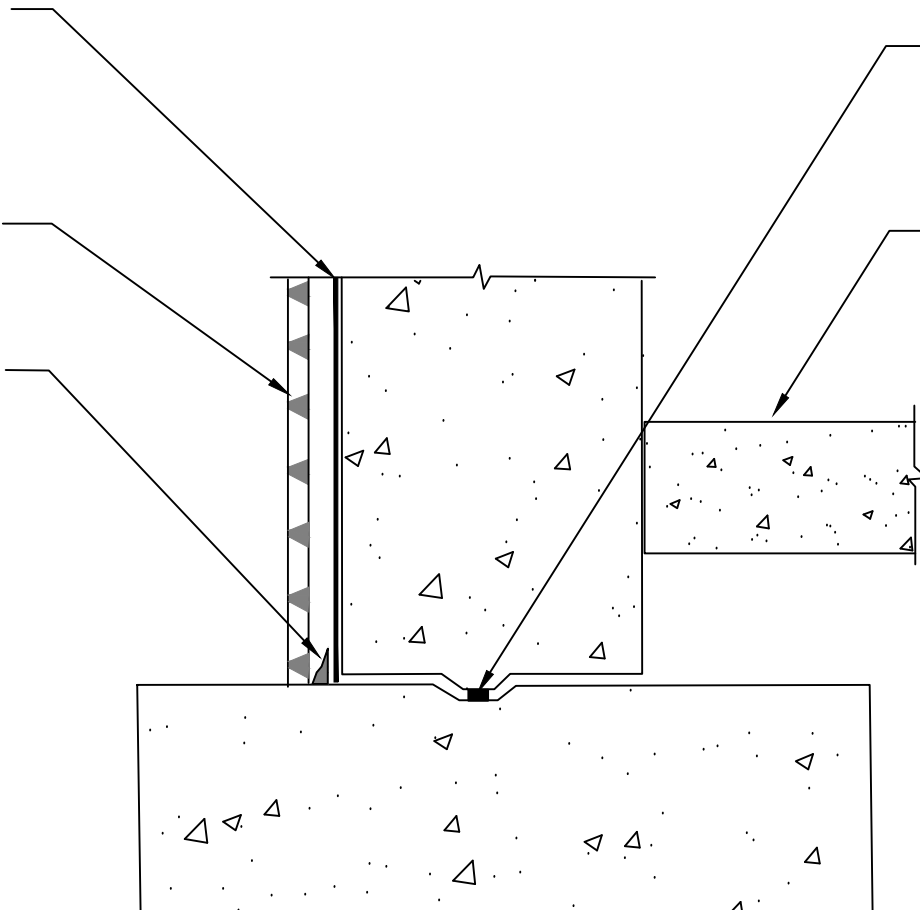
POLYGUARD PRM MEMBRANE
APPLIED TO SUBSTRATE
PREPARED WITH POLYGUARD
650 LT LIQUID ADHESIVE OR
POLYGUARD CALIFORNIA
SEALANT AT A RATE OF 250 - 300
SF/GAL OR POLYGUARD 650 WB
LIQUID ADHESIVE AT A RATE OF
350 - 400 SF/GAL

POLYGUARD POLYFLOW 15 /15P
SHEET MOLDED DRAIN FABRIC
FACING BACKFILL

POLYGUARD DETAIL SEALANT
PW OR POLYGUARD LM-95
APPLIED TO TERMINAL EDGE OF
MEMBRANE

WATERSTOP PER MANUFACTURES
RECOMMENDATION - BY OTHERS

TOP OF INTERIOR FLOOR HEIGHT IS
GREATER THAN 12" ABOVE TOP OF
FOOTER



PRM10

SECTION @ TOP OF INTERIOR FLOOR GREATER THAN 12" FROM TOP OF FOOTER

Polyguard Products, Inc.
P.O. Box 755 - Ennis, TX 75120
Phone: 214-515-5000
Web Site - www.polyguard.com

**SPECIAL NOTE: IF ADHESIVE IS REQUIRED FOR
SEAMS OR ENDLAPS DO NOT USE POLYGUARD
650 WB LIQUID ADHESIVE**

©POLYGUARD PRODUCTS, INC.
MATERIAL SEPARATED FOR CLARITY

<small>The information provided is based on data and knowledge considered to be true and accurate and is offered for the users' consideration, investigation and verification, but we do not warrant the results to be obtained. Please read all data sheets, statements, recommendations or suggestions in conjunction with our conditions of sale, which apply to all goods supplied by us.</small>	NOT TO SCALE
	EFFECTIVE DATE: 10/01/2022
	SUPERCEDES: 05/05/2022