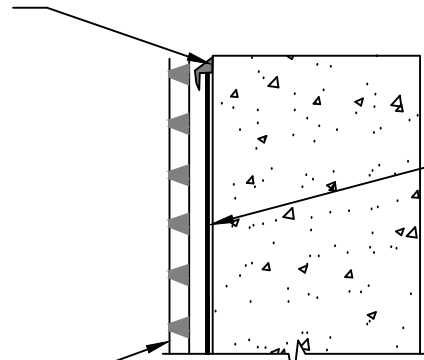


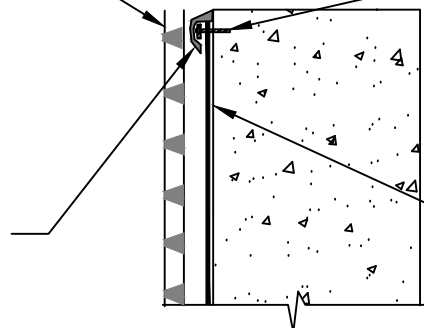
POLYGUARD DETAIL SEALANT OR  
POLYGUARD LM-95 APPLIED TO THE TOP  
TERMINAL EDGE



POLYGUARD PRM MEMBRANE APPLIED TO  
SUBSTRATE PREPARED WITH POLYGUARD 650 LT  
LIQUID ADHESIVE OR POLYGUARD CALIFORNIA  
SEALANT AT A RATE OF 250 -300 SF/GAL OR  
POLYGUARD 650 WB LIQUID ADHESIVE AT A RATE OF  
350 TO 400 SF/GAL

POLYGUARD POLYFLOW 15 / 15P MOLDED  
SHEET DRAIN - FABRIC FACING BACKFILL

1/8" X 1" METAL TERMINATION BAR FASTENED AT 8"  
SPACING AND 2" FROM EACH END - TERM BAR  
RECOMMENDED BY POLYGUARD - BY OTHERS



POLYGUARD DETAIL SEALANT PW OR  
POLYGUARD LM-95 APPLIED TO THE TOP  
OF THE TERMINATION BAR AND  
COVERING MINIMUM 1/8" BEYOND  
PERIMETER OF FASTENER HEADS

POLYGUARD PRM MEMBRANE APPLIED TO SUBSTRATE  
PREPARED WITH POLYGUARD 650 LT LIQUID ADHESIVE  
OR POLYGUARD CALIFORNIA SEALANT AT A RATE OF  
250 - 300 SF/GAL OR POLYGUARD 650 WB LIQUID  
ADHESIVE AT A RATE OF 350 TO 400 SF/GAL



**SECTION @ TOP OF WALL TERMINATION OPTIONS**

Polyguard Products, Inc.  
P.O. Box 755 - Ennis, TX 75120  
Phone: 214-515-5000  
Web Site - [www.polyguard.com](http://www.polyguard.com)

**SPECIAL NOTE: IF ADHESIVE IS REQUIRED FOR  
SEAMS OR ENDLAPS DO NOT USE POLYGUARD  
650 WB LIQUID ADHESIVE**

©POLYGUARD PRODUCTS, INC.  
MATERIAL SEPARATED FOR CLARITY

|   |                               |
|---|-------------------------------|
| <small>The information provided is based on data and knowledge considered to be true and accurate and is offered for the users' consideration, investigation and verification, but we do not warrant the results to be obtained. Please read all data sheets, statements, recommendations or suggestions in conjunction with our conditions of sale, which apply to all goods supplied by us.</small> | NOT TO SCALE                  |
|   | EFFECTIVE DATE:<br>10/01/2022 |
|   | SUPERCEDES:<br>05/05/2022     |