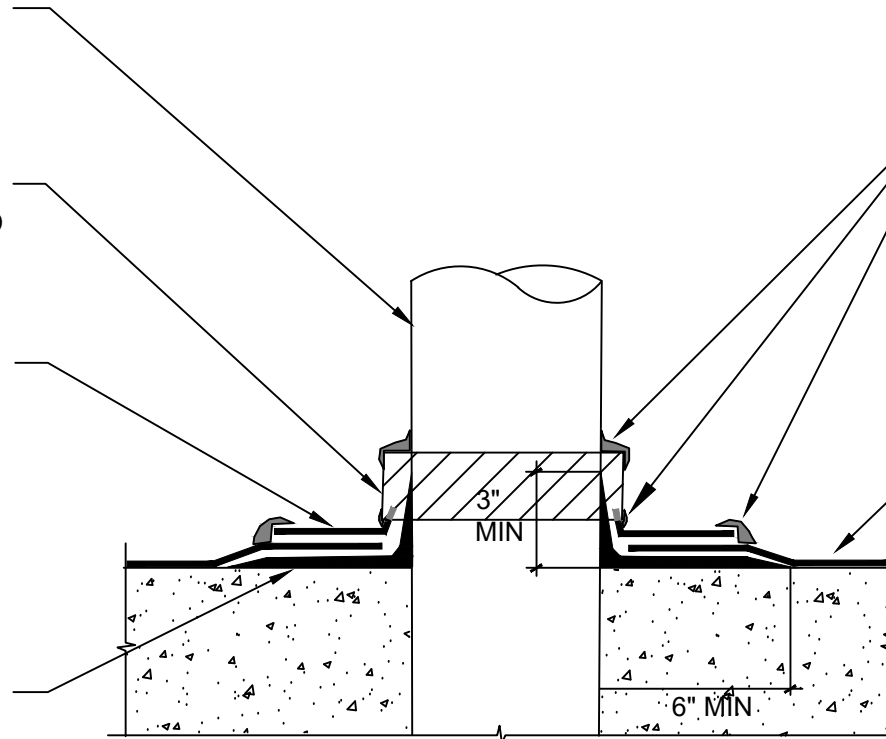


SECURED PENETRATION MEMBER
CLEAN AND ABRAID 3" OF THE
BASE OF PENETRATION
SIDEWALLS. APPLY POLYGUARD
650 LT LIQUID ADHESIVE OR
POLYGUARD CALIFORNIA
SEALANT AT A RATE OF 250 - 300
SF/GALOR POLYGUARD 650 WB
LIQUID ADHESIVE AT A RATE OF
350-400 SF/GAL TO SIDEWALLS

3" PIECE OF POLYGUARD 650
MEMBRANE WRAPPED AROUND
THE PIPE AND TERMINATION OF
TARGET PATCH AND ONTO CURED
POLYGUARD DETAIL SEALANT PW
OR POLYGUARD LM-95

TARGET PATCH OF POLYGUARD
650 MEMBRANE TO CREATE A
TIGHT SEAL AROUND
PENETRATION

POLYGUARD DETAIL SEALANT PW
OR POLYGUARD LM-95 APPLY 6"
ON TO RAW CONCRETE AND 3"
ONTO ABRAIDED AND PRIMED
PENETRATION



POLYGUARD DETAIL SEALANT
PW OR POLYGUARD LM-95
APPLIED TO TERMINAL EDGES
OF TARGET PATCH

FIELD SHEET OF PRM
MEMBRANE ROUGH FIT
AROUND PENETRATION
APPLIED TO SUBSTRATE
PREPARED WITH POLYGUARD
650 LT LIQUID ADHESIVEOR
POLYGUARD CALIFORNIA
SEALANT AT A RATE OF 250 TO
300 SF/GAL OR POLYGUARD 650
WB LIQUID ADHESIVE APPLIED
AT A RATE OF 350 - 400 SF/GAL
AND OVER TOP OF POLYGUARD
DETAIL SEALANT PW OR
POLYGUARD LM-95



SECTION@ HORIZONTAL PENETRATION WATERPROOFING

©POLYGUARD PRODUCTS, INC.
MATERIAL SEPARATED FOR CLARITY

Polyguard Products, Inc.
P.O. Box 755 - Ennis, TX 75120
Phone: 214-515-5000
Web Site - www.polyguard.com

**SPECIAL NOTE: IF ADHESIVE IS REQUIRED FOR
SEAMS OR ENDLAPS DO NOT USE POLYGUARD
650 WB LIQUID ADHESIVE**

<small>The information provided is based on data and knowledge considered to be true and accurate and is offered for the users' consideration, investigation and verification, but we do not warrant the results to be obtained. Please read all data sheets, statements, recommendations or suggestions in conjunction with our conditions of sale, which apply to all goods supplied by us.</small>	NOT TO SCALE
	EFFECTIVE DATE: 07/15/2024
	SUPERCEDES: 10/01/2022