

CONCRETE FOUNDATION WALL - BY OTHERS

POLYGUARD STRETCH FLEX WATERPROOFING MEMBRANE  
APPLIED AT 27 SF/GAL (60 MILS WET)

RIGID INSULATION APPLIED OVER POLYGUARD STRETCH FLEX WITH  
LOW RISE SPRAY ADHESIVE - BY OTHERS

POLYGUARD POLYFLOW 15 / 15P MOLDED SHEET DRAIN FABRIC  
FACING BACKFILL

POLYGUARD DETAIL SEALANT APPLIED 60 MILS A MINIMUM 1 1/2"  
ONTO EXISTING POLYGUARD STRETCH FLEX AND POLYGUARD  
UNDERSLAB MEMBRANE

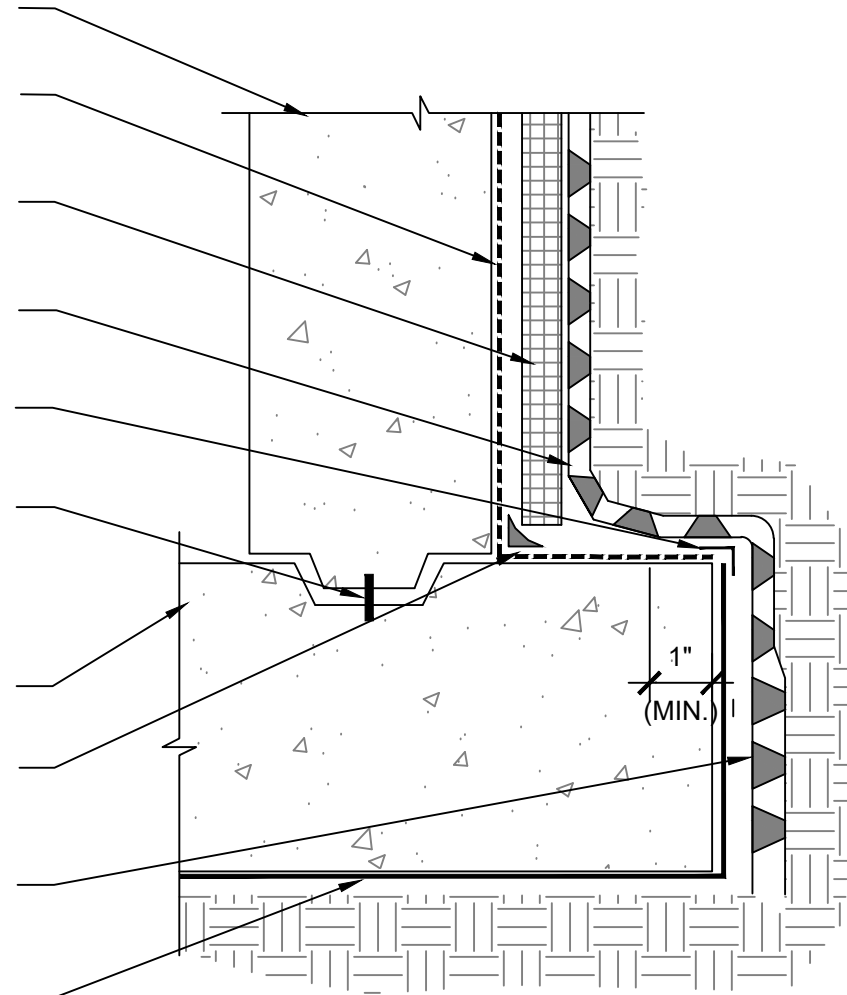
WATERSTOP - BY OTHERS

CONCRETE FOOTER - BY OTHERS

POLYGUARD DETAIL SEALANT PW APPLIED AND TOOLED TO FORM  
A 3/4" CANT

POLYGUARD TOTALFLOW HIGH CAPACITY SHEET MOLDED  
PERIMETER DRAINAGE BOARD (OPTIONAL) BUT MUST USE  
POLYGUARD POLYFLOW 15/15P OR PROTECTION BOARD BY  
OTHERS TO PROTECT THE POLYGUARD STRETCH FLEX

POLYGUARD UNDERSLAB MEMBRANE WITH FABRIC SIDE OUT  
PLACED INTO FORMS PRIOR TO CONCRETE POUR



**SECTION @ STRETCH FLEX TIE-IN TO UNDERSLAB MEMBRANE**

Polyguard Products, Inc.  
P.O. Box 755 - Ennis, TX 75120  
Phone: 214-515-5000  
Web Site - www.polyguard.com

©POLYGUARD PRODUCTS, INC.  
MATERIAL SEPARATED FOR CLARITY

<small>The information provided is based on data and knowledge considered to be true and accurate and is offered for the users' consideration, investigation and verification, but we do not warrant the results to be obtained. Please read all data sheets, statements, recommendations or suggestions in conjunction with our conditions of sale, which apply to all goods supplied by us.</small>	NOT TO SCALE
	EFFECTIVE DATE: 03/20/2023
	SUPERCEDES: 10/01/2022