

CONCRETE FOUNDATION WALL - BY OTHERS

POLYGUARD STRETCH FLEX WATERPROOFING MEMBRANE
APPLIED AT 27 SF/GAL (60 MILS WET)

RIGID INSULATION APPLIED OVER POLYGUARD STRETCH FLEX WITH
LOW RISE SPRAY ADHESIVE - BY OTHERS

POLYGUARD POLYFLOW 15 / 15P MOLDED SHEET DRAIN FABRIC
FACING BACKFILL

POLYGUARD DETAIL SEALANT APPLIED 60 MILS A MINIMUM 1 1/2"
ONTO EXISTING POLYGUARD STRETCH FLEX AND POLYGUARD
UNDERSLAB MEMBRANE

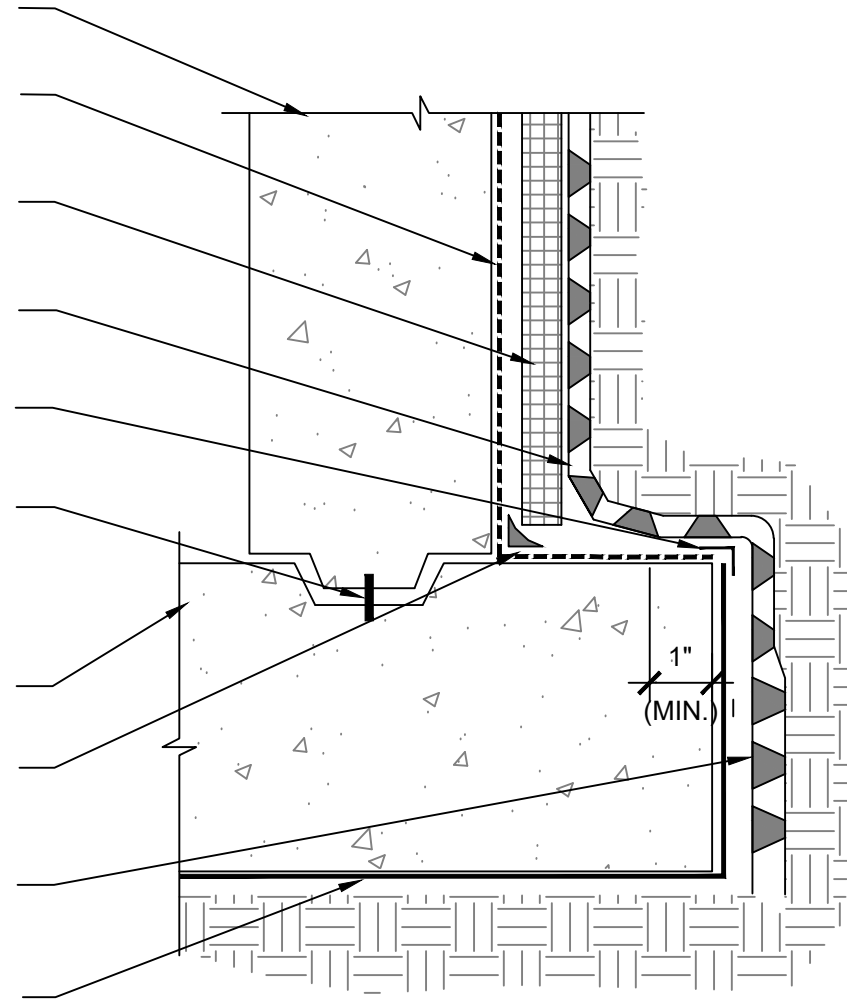
WATERSTOP - BY OTHERS

CONCRETE FOOTER - BY OTHERS

POLYGUARD DETAIL SEALANT PW APPLIED AND TOOLED TO FORM
A 3/4" CANT

POLYGUARD TOTALFLOW HIGH CAPACITY SHEET MOLDED
PERIMETER DRAINAGE BOARD (OPTIONAL) BUT MUST USE
POLYGUARD POLYFLOW 15/15P OR PROTECTION BOARD BY
OTHERS TO PROTECT THE POLYGUARD STRETCH FLEX

POLYGUARD UNDERSLAB MEMBRANE WITH FABRIC SIDE OUT
PLACED INTO FORMS PRIOR TO CONCRETE POUR



SFBG03 SECTION @ STRETCH FLEX TIE-IN TO UNDERSLAB MEMBRANE

©POLYGUARD PRODUCTS, INC.
MATERIAL SEPARATED FOR CLARITY

Polyguard Products, Inc.
P.O. Box 755 - Ennis, TX 75120
Phone: 214-515-5000
Web Site - www.polyguard.com

<small>The information provided is based on data and knowledge considered to be true and accurate and is offered for the users' consideration, investigation and verification, but we do not warrant the results to be obtained. Please read all data sheets, statements, recommendations or suggestions in conjunction with our conditions of sale, which apply to all goods supplied by us.</small>	NOT TO SCALE
	EFFECTIVE DATE: 07/15/2024
	SUPERCEDES: 03/20/2023