

POLYGUARD MEMBRANE: 650, 650 PRM OR 650 WRM APPLIED TO CLEAN, DRY, AND FROST FREE CONCRETE PREPARED WITH POLYGUARD 650 LT LIQUID ADHESIVE OR POLYGUARD CALIFORNIA SEALANT AT A RATE OF 250- 300 SF/GAL

POLYGUARD POLYFLOW 15 / 15P MOLDED SHEET DRAIN FABRIC FACING BACKFILL

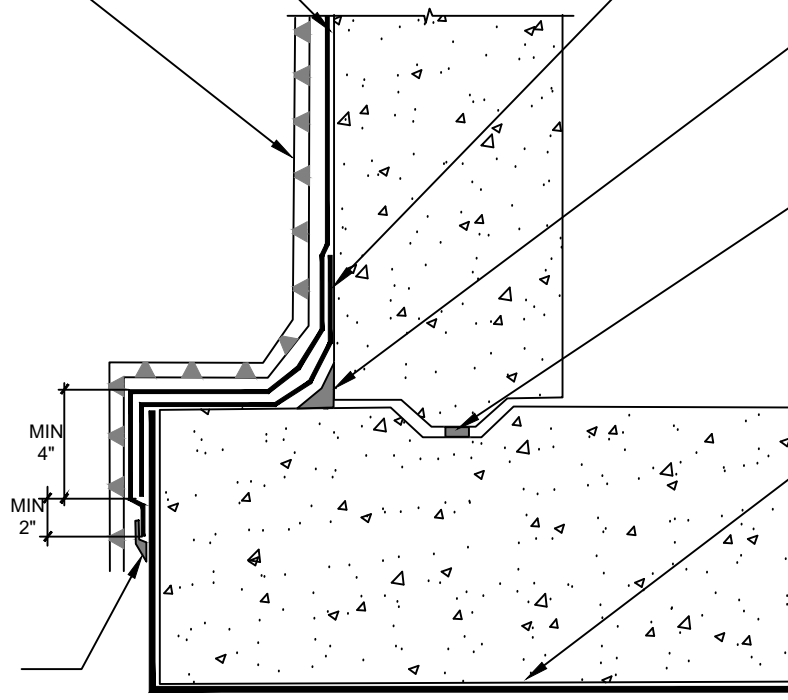
POLYGUARD MEMBRANE: 650, 650 PRM, 650 WRM OR 12" POLYGUARD DETAIL TAPE OR DETAIL TAPE WRM APPLIED TO CLEAN, DRY, AND FROST FREE CONCRETE PREPARED WITH POLYGUARD 650 LT LIQUID ADHESIVE OR POLYGUARD CALIFORNIA SEALANT APPLIED AT A RATE OF 250 - 300 SF/GAL

POLYGUARD DETAIL SEALANT PW OR POLYGUARD LM-95 APPLIED AND TOOLED TO FORM A 3/4" CANT

WATERSTOP - BY OTHERS

EXISTING POLYGUARD UNDERSLAB MEMBRANE

90 MIL MINIMUM THICKNESS OF POLYGUARD DETAIL SEALANT PW OR POLYGUARD LM-95 EXTENDED ONTO A MINIMUM OF 1/2" TO EACH SIDE OF THE TERMINAL EDGE



SECTION @ 650 TIE IN TO EMBEDDED UNDERSLAB MEMBRANE WITH POLYFLOW 15 / 15P

US14

<small>The information provided is based on data and knowledge considered to be true and accurate and is offered for the users' consideration, investigation and verification, but we do not warrant the results to be obtained. Please read all data sheets, statements, recommendations or suggestions in conjunction with our conditions of sale, which apply to all goods supplied by us.</small>	NOT TO SCALE
	EFFECTIVE DATE: 12/16/2024
	SUPERCEDES: 07/15/2024