

POLYGUARD 650 OR POLYGUARD PRM MEMBRANE APPLIED TO CLEAN, DRY, AND FROST FREE CONCRETE PREPARED WITH POLYGUARD 650 LT LIQUID ADHESIVE OR POLYGUARD CALIFORNIA SEALANT AT A RATE OF 250- 300 SF/GAL

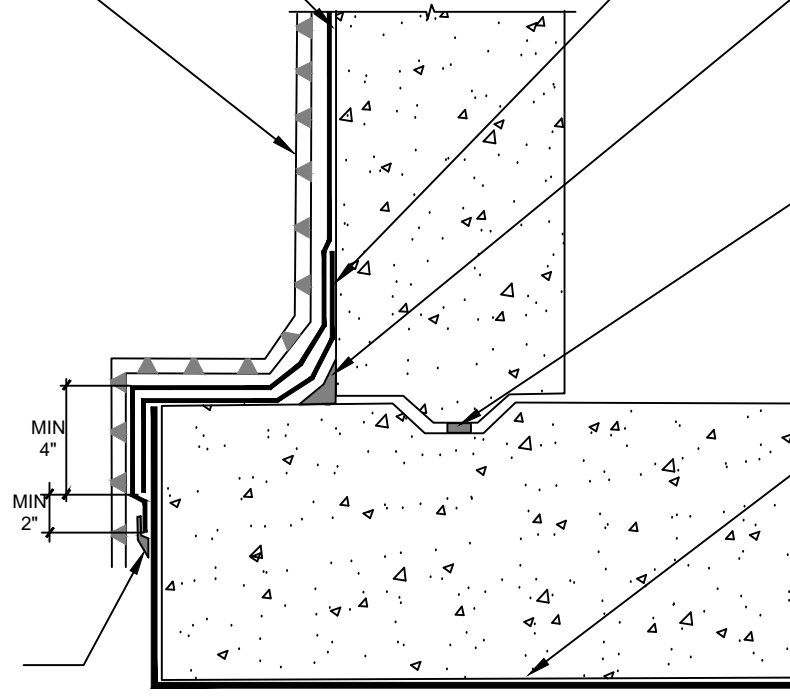
POLYGUARD POLYFLOW 15 / 15P MOLDED SHEET DRAIN FABRIC FACING BACKFILL

POLYGUARD 650 MEMBRANE OR POLYGUARD DETAIL TAPE APPLIED TO CLEAN, DRY, AND FROST FREE CONCRETE PREPARED WITH POLYGUARD 650 LT LIQUID ADHESIVE OR POLYGUARD CALIFORNIA SEALANT APPLIED AT A RATE OF 250 - 300 SF/GAL

POLYGUARD DETAIL SEALANT PW OR POLYGUARD LM-95 APPLIED AND TOOLED TO FORM A 3/4" CANT

WATERSTOP - BY OTHERS

EXISTING POLYGUARD UNDERSLAB MEMBRANE



90 MIL MINIMUM THICKNESS OF POLYGUARD DETAIL SEALANT PW OR POLYGUARD LM-95 EXTENDED ONTO A MINIMUM OF 1/2" TO EACH SIDE OF THE TERMINAL EDGE

**US14**

**SECTION @ 650 OR PRM MEMBRANE TIE IN TO EMBEDDED UNDERSLAB MEMBRANE WITH POLYFLOW 15 / 15P**

Polyguard Products, Inc.  
P.O. Box 755 - Ennis, TX 75120  
Phone: 214-515-5000  
Web Site - [www.polyguard.com](http://www.polyguard.com)

©POLYGUARD PRODUCTS, INC.  
MATERIAL SEPARATED FOR CLARITY

<small>The information provided is based on data and knowledge considered to be true and accurate and is offered for the users' consideration, investigation and verification, but we do not warrant the results to be obtained. Please read all data sheets, statements, recommendations or suggestions in conjunction with our conditions of sale, which apply to all goods supplied by us.</small>	NOT TO SCALE
	EFFECTIVE DATE: 07/15/2024
	SUPERCEDES: 10/01/2022