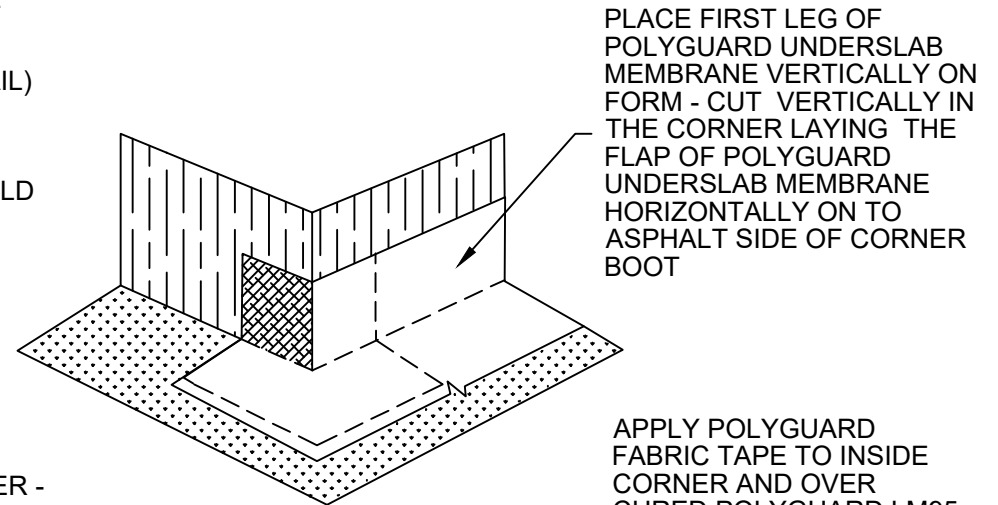
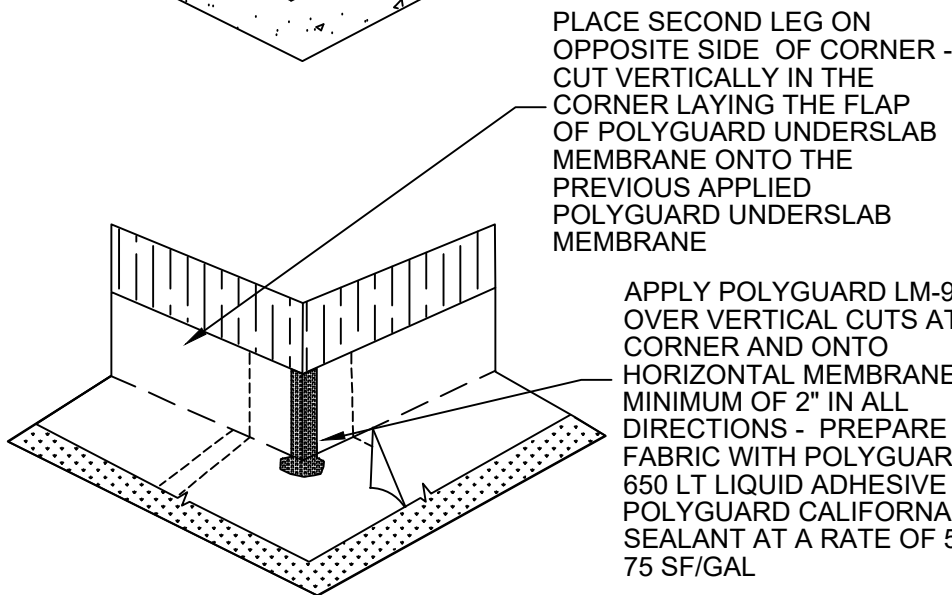


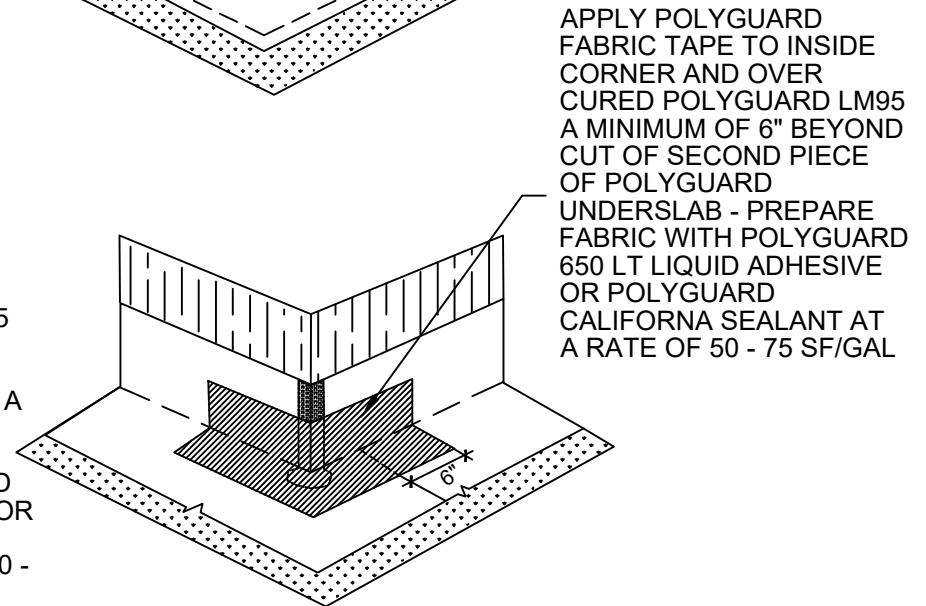
PLACE POLYGUARD OUTSIDE CORNER BOOT (REFERENCE POLYGUARD FIELD MADE OUTSIDE CORNER BOOT DETAIL) ONTO CONCRETE FORM ASPHALT SIDE OUT - KEEP CLEAN FOR ADHESION OF POLYGUARD UNDERSLAB FIELD APPLIED CORNER PIECES



PLACE FIRST LEG OF POLYGUARD UNDERSLAB MEMBRANE VERTICALLY ON FORM - CUT VERTICALLY IN THE CORNER LAYING THE FLAP OF POLYGUARD UNDERSLAB MEMBRANE HORIZONTALLY ON TO ASPHALT SIDE OF CORNER BOOT



PLACE SECOND LEG ON OPPOSITE SIDE OF CORNER - CUT VERTICALLY IN THE CORNER LAYING THE FLAP OF POLYGUARD UNDERSLAB MEMBRANE ONTO THE PREVIOUS APPLIED POLYGUARD UNDERSLAB MEMBRANE



APPLY POLYGUARD LM-95 OVER VERTICAL CUTS AT CORNER AND ONTO HORIZONTAL MEMBRANE A MINIMUM OF 2" IN ALL DIRECTIONS - PREPARE FABRIC WITH POLYGUARD 650 LT LIQUID ADHESIVE OR POLYGUARD CALIFORNIA SEALANT AT A RATE OF 50 - 75 SF/GAL

APPLY POLYGUARD FABRIC TAPE TO INSIDE CORNER AND OVER CURED POLYGUARD LM95 A MINIMUM OF 6" BEYOND CUT OF SECOND PIECE OF POLYGUARD UNDERSLAB - PREPARE FABRIC WITH POLYGUARD 650 LT LIQUID ADHESIVE OR POLYGUARD CALIFORNIA SEALANT AT A RATE OF 50 - 75 SF/GAL

**US23**

**SECTION @ OUTSIDE CORNER (FIELD CUT)**

<small>The information provided is based on data and knowledge considered to be true and accurate and is offered for the users' consideration, investigation and verification, but we do not warrant the results to be obtained. Please read all data sheets, statements, recommendations or suggestions in conjunction with our conditions of sale, which apply to all goods supplied by us.</small>	NOT TO SCALE
	EFFECTIVE DATE: 10/01/2022
	SUPERCEDES: 02/01/2022