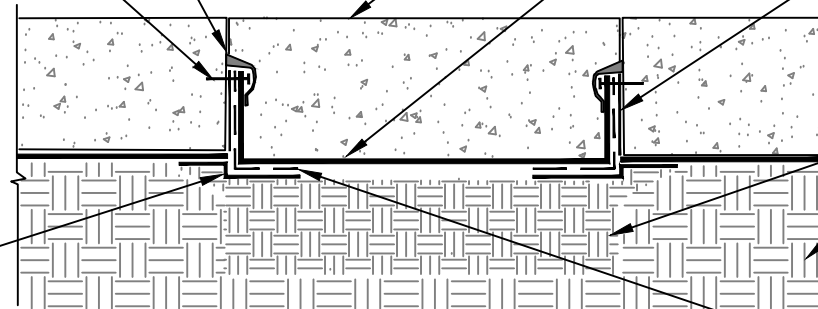


MINIMUM 90 MILS OF POLYGUARD LM-95 APPLIED TO CLEAN, DRY, AND FROST FREE CONCRETE AND THE TOP EDGE OF THE TERMINATION STRIP, OVER EACH FASTENER HEAD AND ONTO 1" OF FABRIC BELOW THE TERMINATION STRIP

1/8" X 1" METAL TERMINATION BAR AND FASTENERS SPACED 2" INWARD FROM EACH END OF TERMINATION STRIP AND NOT MORE THAN 8" SPACING BETWEEN FASTENERS- BY OTHERS

DIG OUT AND EXPOSE POLYGUARD UNDERSLAB MEMBRANE THE ENTIRE PERIMETER OF THE TRENCH A MINIMUM OF 2" PAST SAW CUTS - APPLY A 12" PIECE OF POLYGUARD MEMBRANE: 650, 650 PRM OR 650 WRM TO CLEANED FILM SIDE OF POLYGUARD UNDERSLAB - LEAVING FILM ON EXPOSED SIDE OF MEMBRANE - ANCHOR TO SIDE OF TRENCH TO PROTECT MEMBRANE FROM BACKFILLING DAMAGE. ONCE BACKFILLED THEN LAY TAPED PIECE TO BOTTOM OF TRENCH AND REMOVE FILM FOR ADHESION OF POLYGUARD BOOT AND POLYGUARD UNDERSLAB MEMBRANE

**NOTE: AFTER CONCRETE IS REPLACED, SEAL CROSS SAW CUTS WITH INJECTABLE MATERIAL BY OTHERS**



REPLACEMENT CONCRETE  
NEW PIECE OF POLYGUARD UNDERSLAB MEMBRANE ON BOTTOM OF TRENCH AND ADHERE FILM SIDE OF POLYGUARD UNDERSLAB TO POLYGUARD 606 TAPE

POLYGUARD 606 TAPE APPLIED TO CLEAN, DRY AND FROST FREE CONCRETE SIDE WALL OF TRENCH PREPARED WITH POLYGUARD 650 LT LIQUID ADHESIVE OR POLYGUARD CALIFORNIA SEALANT AT A RATE OF 250 -300 SF/GAL

APPROVED SUBSTRATES

PLACE POLYGUARD US OUTSIDE CORNER BOOT ONTO ASPHALT SIDE OF POLYGUARD MEMBRANE: 650, 650 PRM OR 650 WRM AND INTO CORNER - TO FIELD MAKE INSIDE CORNERS REFERENCE POLYGUARD 650 MEMBRANE BOOT FOR POLYGUARD UNDERSLAB MEMBRANE

**US6**

**SECTION @ SAW CUT SLAB THROUGH EXISTING MEMBRANE**

<small>The information provided is based on data and knowledge considered to be true and accurate and is offered for the users' consideration, investigation and verification, but we do not warrant the results to be obtained. Please read all data sheets, statements, recommendations or suggestions in conjunction with our conditions of sale, which apply to all goods supplied by us.</small>	NOT TO SCALE
	EFFECTIVE DATE: 12/16/2024
	SUPERCEDES: 07/15/2024