

POLYGUARD POLYFLOW 15 / 15P  
MOLDED SHEET DRAIN WITH  
FABRIC FACING BACKFILL

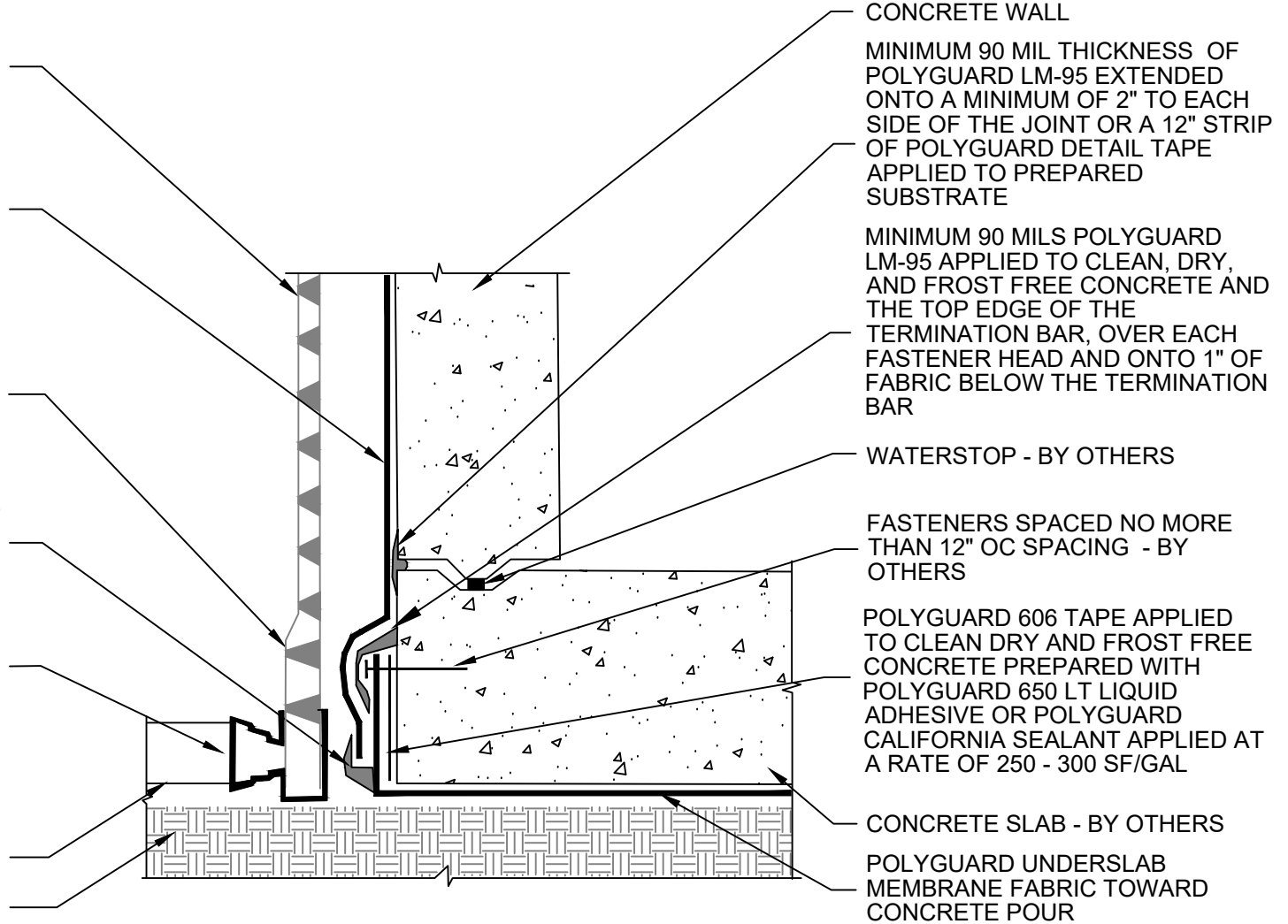
POLYGUARD 650 OR POLYGUARD  
PRM MEMBRANE APPLIED TO  
CLEAN DRY AND FROST FREE  
CONCRETE PREPARED WITH  
POLYGUARD 650 LT LIQUID  
ADHESIVE OR POLYGUARD  
CALIFORNIA SEALANT APPLIED  
AT A RATE OF 250 - 300 SF/GAL

POLYGUARD TOTALFLOW  
PERIMETER HIGH CAPACITY  
SHEET MOLDED DRAINAGE WITH  
FABRIC FACING SOIL

MINIMUM 90 MIL THICKNESS OF  
POLYGUARD DETAIL SEALANT PW  
OR LM 95 - EXTENDED A  
MINIMUM OF 1/2" TO EACH SIDE  
OF THE TERMINAL EDGE

POLYGUARD TOTALFLOW  
OUTLET - END & TEE FITTINGS  
AVAILABLE - TEE OUTLET SHOWN

DRAIN PIPE - BY OTHERS  
APPROVED SUBSTRATE - BY  
OTHERS



CONCRETE WALL

MINIMUM 90 MIL THICKNESS OF  
POLYGUARD LM-95 EXTENDED  
ONTO A MINIMUM OF 2" TO EACH  
SIDE OF THE JOINT OR A 12" STRIP  
OF POLYGUARD DETAIL TAPE  
APPLIED TO PREPARED  
SUBSTRATE

MINIMUM 90 MILS POLYGUARD  
LM-95 APPLIED TO CLEAN, DRY,  
AND FROST FREE CONCRETE AND  
THE TOP EDGE OF THE  
TERMINATION BAR, OVER EACH  
FASTENER HEAD AND ONTO 1" OF  
FABRIC BELOW THE TERMINATION  
BAR

WATERSTOP - BY OTHERS

FASTENERS SPACED NO MORE  
THAN 12" OC SPACING - BY  
OTHERS

POLYGUARD 606 TAPE APPLIED  
TO CLEAN DRY AND FROST FREE  
CONCRETE PREPARED WITH  
POLYGUARD 650 LT LIQUID  
ADHESIVE OR POLYGUARD  
CALIFORNIA SEALANT APPLIED AT  
A RATE OF 250 - 300 SF/GAL

CONCRETE SLAB - BY OTHERS

POLYGUARD UNDERSLAB  
MEMBRANE FABRIC TOWARD  
CONCRETE POUR

**US8**

**SECTION @ 650 OR PRM MEMBRANE TIE IN TO POST TERMINATED UNDERSLAB MEMBRANE -  
PROFILE 1**

Polyguard Products, Inc.  
P.O. Box 755 - Ennis, TX 75120  
Phone: 214-515-5000  
Web Site - www.polyguard.com

©POLYGUARD PRODUCTS, INC.  
MATERIAL SEPARATED FOR CLARITY

<p>The information provided is based on data and knowledge considered to be true and accurate and is offered for the users' consideration, investigation and verification, but we do not warrant the results to be obtained. Please read all data sheets, statements, recommendations or suggestions in conjunction with our conditions of sale, which apply to all goods supplied by us.</p>	NOT TO SCALE
	EFFECTIVE DATE: 10/01/2022
	SUPERCEDES: 02/01/2022