

POLYGUARD POLYFLOW 15 / 15P
MOLDED SHEET DRAIN WITH
FABRIC FACING BACKFILL

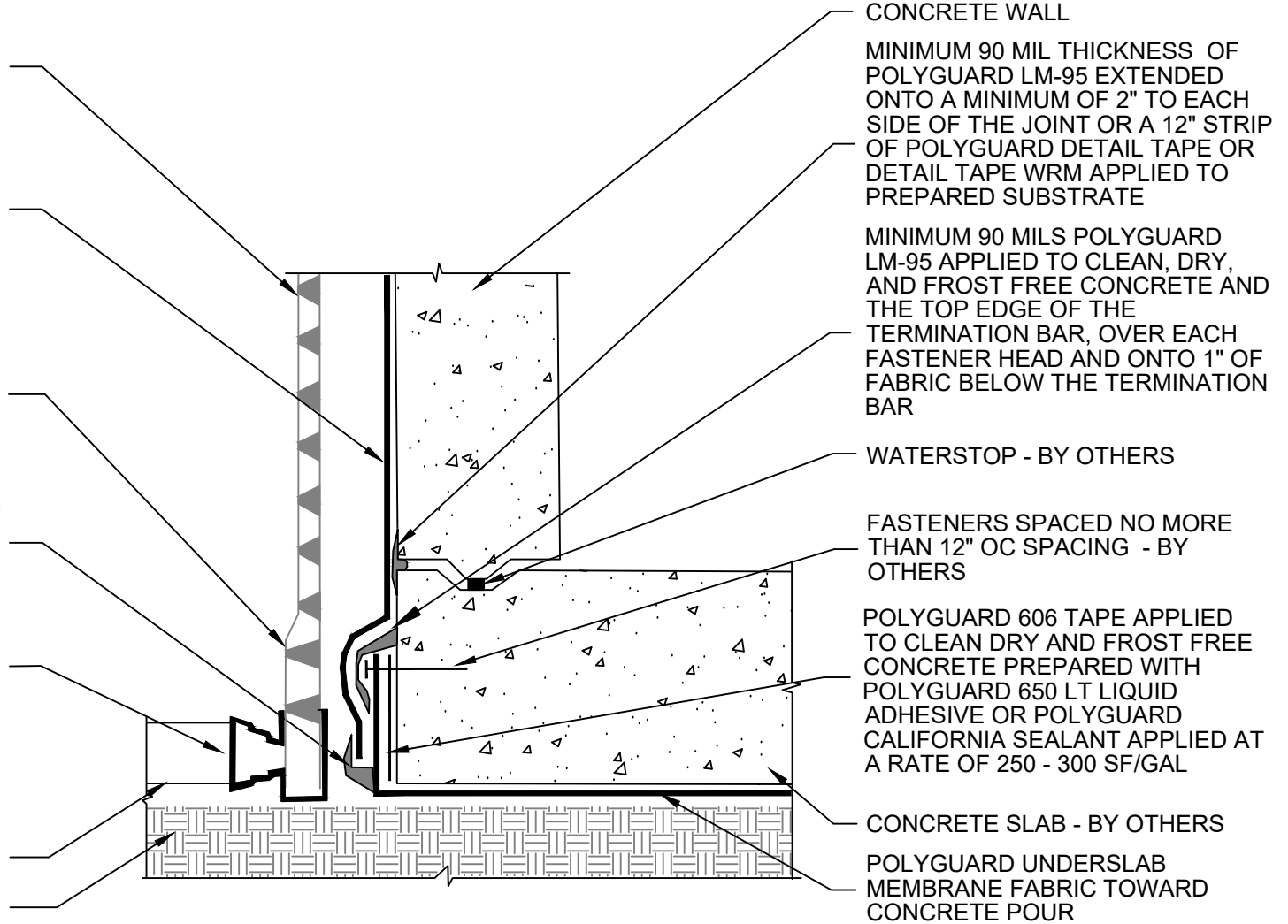
POLYGUARD MEMBRANE: 650, 650
PRM OR 650 WRM APPLIED TO
CLEAN DRY AND FROST FREE
CONCRETE PREPARED WITH
POLYGUARD 650 LT LIQUID
ADHESIVE OR POLYGUARD
CALIFORNIA SEALANT APPLIED
AT A RATE OF 250 - 300 SF/GAL

POLYGUARD TOTALFLOW
PERIMETER HIGH CAPACITY
SHEET MOLDED DRAINAGE WITH
FABRIC FACING SOIL

MINIMUM 90 MIL THICKNESS OF
POLYGUARD DETAIL SEALANT PW
OR LM 95 - EXTENDED A
MINIMUM OF 1/2" TO EACH SIDE
OF THE TERMINAL EDGE

POLYGUARD TOTALFLOW
OUTLET - END & TEE FITTINGS
AVAILABLE - TEE OUTLET SHOWN

DRAIN PIPE - BY OTHERS
APPROVED SUBSTRATE - BY
OTHERS



CONCRETE WALL

MINIMUM 90 MIL THICKNESS OF
POLYGUARD LM-95 EXTENDED
ONTO A MINIMUM OF 2" TO EACH
SIDE OF THE JOINT OR A 12" STRIP
OF POLYGUARD DETAIL TAPE OR
DETAIL TAPE WRM APPLIED TO
PREPARED SUBSTRATE

MINIMUM 90 MILS POLYGUARD
LM-95 APPLIED TO CLEAN, DRY,
AND FROST FREE CONCRETE AND
THE TOP EDGE OF THE
TERMINATION BAR, OVER EACH
FASTENER HEAD AND ONTO 1" OF
FABRIC BELOW THE TERMINATION
BAR

WATERSTOP - BY OTHERS

FASTENERS SPACED NO MORE
THAN 12" OC SPACING - BY
OTHERS

POLYGUARD 606 TAPE APPLIED
TO CLEAN DRY AND FROST FREE
CONCRETE PREPARED WITH
POLYGUARD 650 LT LIQUID
ADHESIVE OR POLYGUARD
CALIFORNIA SEALANT APPLIED AT
A RATE OF 250 - 300 SF/GAL

CONCRETE SLAB - BY OTHERS

POLYGUARD UNDERSLAB
MEMBRANE FABRIC TOWARD
CONCRETE POUR

US8

**SECTION @ 650 OR PRM MEMBRANE TIE IN TO POST TERMINATED UNDERSLAB MEMBRANE -
PROFILE 1**

Polyguard Products, Inc.
P.O. Box 755 - Ennis, TX 75120
Phone: 214-515-5000
Web Site - www.polyguard.com

©POLYGUARD PRODUCTS, INC.
MATERIAL SEPARATED FOR CLARITY

<small>The information provided is based on data and knowledge considered to be true and accurate and is offered for the users' consideration, investigation and verification, but we do not warrant the results to be obtained. Please read all data sheets, statements, recommendations or suggestions in conjunction with our conditions of sale, which apply to all goods supplied by us.</small>	NOT TO SCALE
	EFFECTIVE DATE: 12/16/2024
	SUPERCEDES: 07/15/2024