

POLYGUARD POLYFLOW 15 OR 15P  
SHEET-MOLDED DRAIN WITH FABRIC  
FACING SOIL RETENTION SYSTEM

POLYGUARD UNDERSLAB TRM BLINDSIDE WITH  
FABRIC FACING TOWARDS CONCRETE POUR

POLYGUARD FABRIC TAPE APPLIED TO CLEAN, DRY  
UNDERSLAB TRM PREPARED WITH POLYGUARD  
650 LT LIQUID ADHESIVE OR CALIFORNIA SEALANT  
APPLIED AT A RATE OF 50 - 75 SF / GAL

FASTENERS (BY OTHERS)

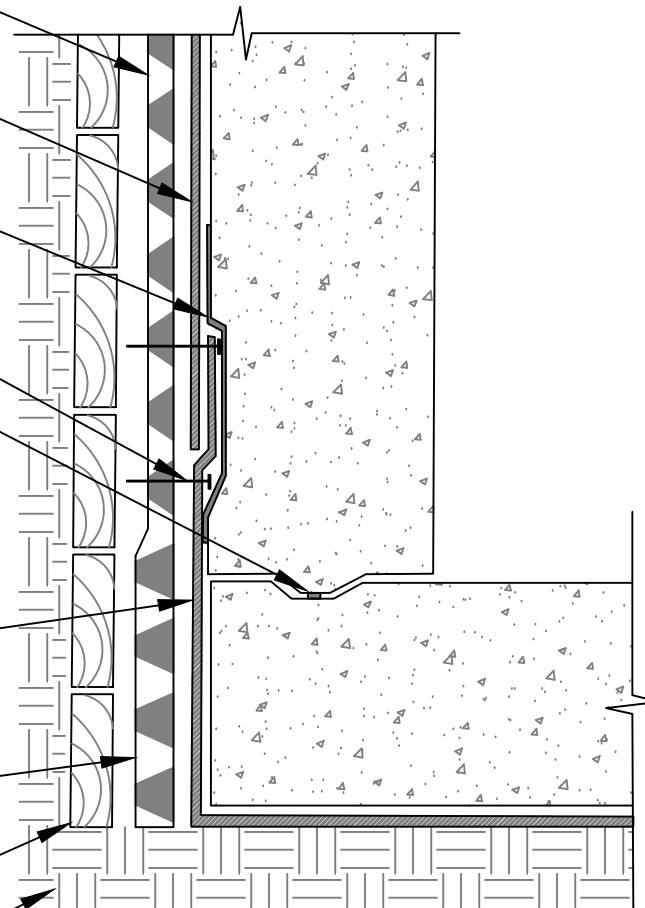
WATERSTOP (BY OTHERS)

POLYGUARD UNDERSLAB TRM WITH FABRIC FACING  
TOWARDS CONCRETE POUR, OVERLAP POLYGUARD  
UNDERSLAB TRM BLINDSIDE A MINIMUM 3" AND A  
MAXIMUM 4" (REFERENCE STANDARD DETAIL UST2)

POLYGUARD TOTALFLOW HIGH-CAPACITY PERIMETER  
SHEET-MOLDED DRAIN WITH FABRIC FACING SOIL  
RETENTION SYSTEM (OUTLET FITTINGS NOT SHOWN)

SOIL RETENTION SYSTEM - TIMBER LAGGING SHOWN

APPROVED SUBSTRATE



**UST1**

**SECTION @ UNDERSLAB TRM - TIE-IN TO UNDERSLAB TRM BLINDSIDE**

MATERIAL SEPARATED FOR CLARITY  
© POLYGUARD PRODUCTS, INC.

<p>The information provided is based on data and knowledge considered to be true and accurate and is offered for the users' consideration, investigation and verification, but we do not warrant the results to be obtained. Please read all data sheets, statements, recommendations or suggestions in conjunction with our conditions of sale, which apply to all goods supplied by us.</p>	NOT TO SCALE
	EFFECTIVE DATE: 12/17/2024
	SUPERCEDES: 12/05/2024