

POLYGUARD POLYFLOW 15 / 15P SHEET-MOLDED DRAINAGE AND PROTECTION BOARD WITH FABRIC FACING SOIL / BACKFILL

POLYGUARD 650 TRM APPLIED TO CLEAN, DRY, FROST-FREE, RAW CONCRETE PREPARED WITH POLYGUARD 650 LT LIQUID ADHESIVE OR CALIFORNIA SEALANT APPLIED AT A RATE OF 250 - 300 SF / GAL, OR OVER POLGUARD 650 WB LIQUID ADHESIVE APPLIED AT A RATE OF 350 - 400 SF / GAL

WATERSTOP (BY OTHERS)

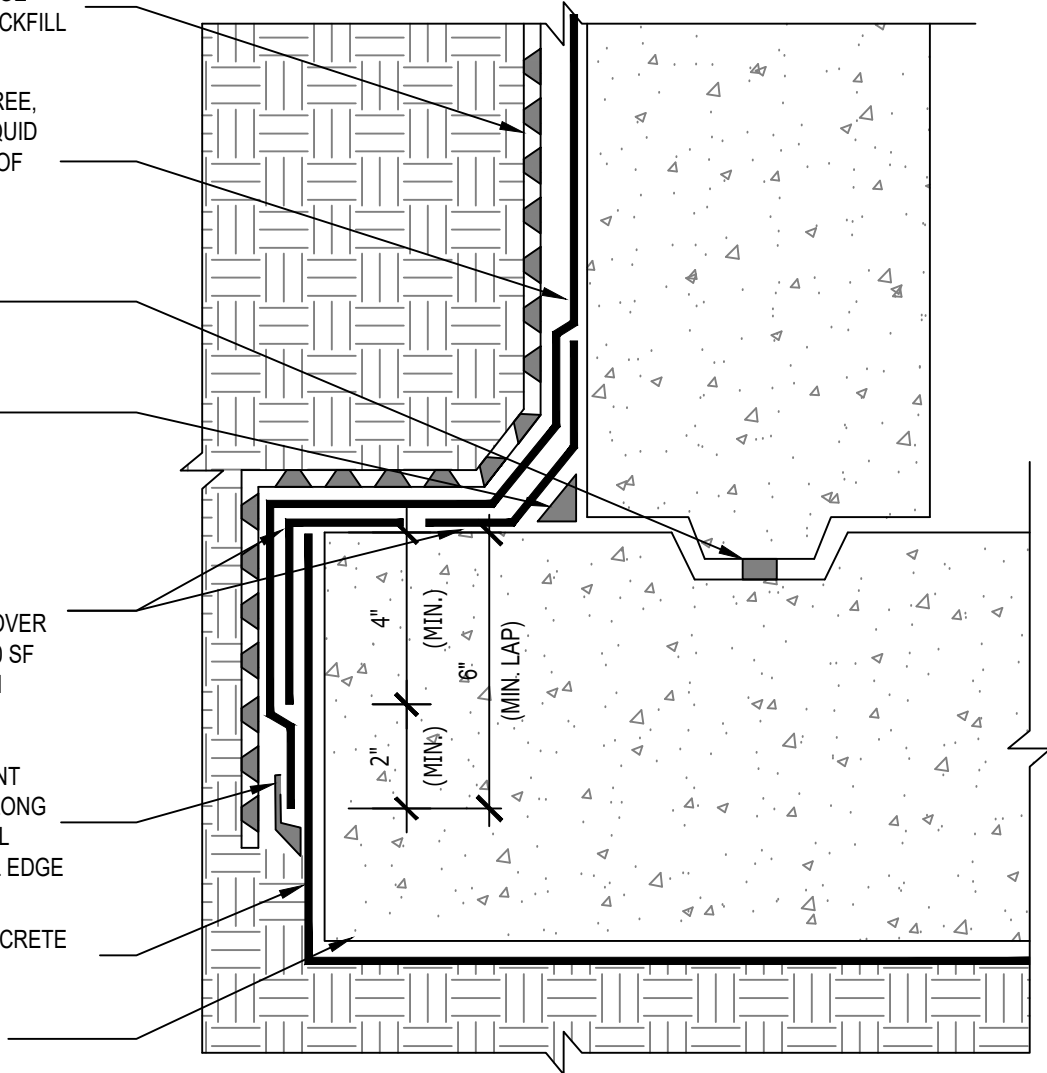
POLYGUARD LM-95 OR DETAIL SEALANT PW APPLIED AND TOOLED OVER CLEAN, DRY, FROST-FREE, RAW CONCRETE TO MINIMUM 3/4" FILLET / CANT

POLYGUARD 650 TRM STRIP APPLIED TO CLEAN, DRY, FROST-FREE, RAW INSIDE AND OUTSIDE CONCRETE CORNERS PREPARED WITH POLYGUARD 650 LT LIQUID ADHESIVE APPLIED AT A RATE OF 250 - 300 SF / GAL, OR OVER 650 WB LIQUID ADHESIVE APPLIED AT A RATE OF 350 - 400 SF / GAL; EXTEND MINIMUM 4" DOWN OVER UNDERSLAB TRM

POLYGUARD LM-95, DETAIL SEALANT PW, OR TRM SEALANT APPLIED AND TOOLED TO MINIMUM 90 MILS OVER AND ALONG CLEAN AND DRY POLYGUARD 650 TRM BOTTOM TERMINAL EDGE, EXTEND MINIMUM 1/2" TO EACH SIDE OF TERMINAL EDGE

POLYGUARD UNDERSLAB TRM WITH FABRIC FACING CONCRETE SLAB POUR, PROVIDE EMBEDDED TOP TERMINATION

PROVIDE ONLY WOOD FORMS FOR CONCRETE FOOTER POSITION AND PLACEMENT, NO EARTH FORMS



UST14

SECTION @ UNDERSLAB TRM - TIE-IN TO 650 TRM AT FOOTER

MATERIAL SEPARATED FOR CLARITY
© POLYGUARD PRODUCTS, INC.

Polyguard Products, Inc.
P.O. Box 755 - Ennis, TX 75120
Phone: 214-515-5000
Web Site - www.polyguard.com

GENERAL NOTE: IF ADHESIVE IS REQUIRED FOR SEAMS OR END LAPS, DO NOT USE POLYGUARD 650 WB LIQUID ADHESIVE.

The information provided is based on data and knowledge considered to be true and accurate and is offered for the users' consideration, investigation and verification, but we do not warrant the results to be obtained. Please read all data sheets, statements, recommendations or suggestions in conjunction with our conditions of sale, which apply to all goods supplied by us.

NOT TO SCALE
EFFECTIVE DATE: 12/17/2024
SUPERCEDES: 12/05/2024