

POLYGUARD POLYFLOW 15 OR 15P SHEET-MOLDED DRAIN WITH FABRIC FACING BACKFILL / SOIL

POLYGUARD 650 TRM APPLIED TO CLEAN, DRY, FROST-FREE, RAW CONCRETE PREPARED WITH POLYGUARD 650 LT LIQUID ADHESIVE OR CALIFORNIA SEALANT APPLIED AT A RATE OF 250 - 300 SF / GAL, OR OVER 650 WB LIQUID ADHESIVE APPLIED AT A RATE OF 350 - 400 SF / GAL

POLYGUARD LM-95 OR DETAIL SEALANT PW APPLIED AND TOOLED ACROSS JOINT TO CONTINUOUS MINIMUM 90 MILS THICK; OR POLYGUARD DETAIL TAPE APPLIED TO CLEAN, DRY, FROST-FREE, RAW SUBSTRATE PREPARED WITH POLYGUARD 650 LT OR CALIFORNIA SEALANT APPLIED AT A RATE OF 250 - 300 SF / GAL, OR OVER 650 WB LIQUID ADHESIVE APPLIED AT A RATE OF 350 - 400 SF / GAL; EXTEND MINIMUM 2" TO EACH SIDE OF JOINT

POLYGUARD TOTALFLOW PERIMETER HIGH-CAPACITY, SHEET-MOLDED DRAINAGE WITH FABRIC FACING BACKFILL / SOIL

FASTENERS, MAXIMUM SPACING 1'-0" O.C. (BY OTHERS)

1/8" X 1" METAL TERMINATION BAR (BY OTHERS) ALIGNED ALONG TERM UNDERSLAB WATER / TERMITE BARRIER MEMBRANE AND 606 DOUBLE-SIDED TAPE TOP EDGE

POLYGUARD TRM SEALANT APPLIED AND TOOLED TO MINIMUM 90 MILS OVER CLEAN, DRY, FROST-FREE, RAW CONCRETE; TERMINATION BAR TOP EDGE; OVER EACH FASTENER HEAD; AND ONTO UNDERSLAB TRM FABRIC MINIMUM 1" BELOW TERMINATION BAR PREPARED WITH POLYGUARD 650 LT LIQUID ADHESIVE OR CALIFORNIA SEALANT APPLIED AT A RATE OF 50 - 75 SF / GAL

POLYGUARD LM-95 OR TRM SEALANT APPLIED AND TOOLED TO MINIMUM 90 MILS, EXTEND MINIMUM 1/2" TO EACH SIDE OF 650 TRM BOTTOM TERMINAL EDGE AS EDGE SEAL

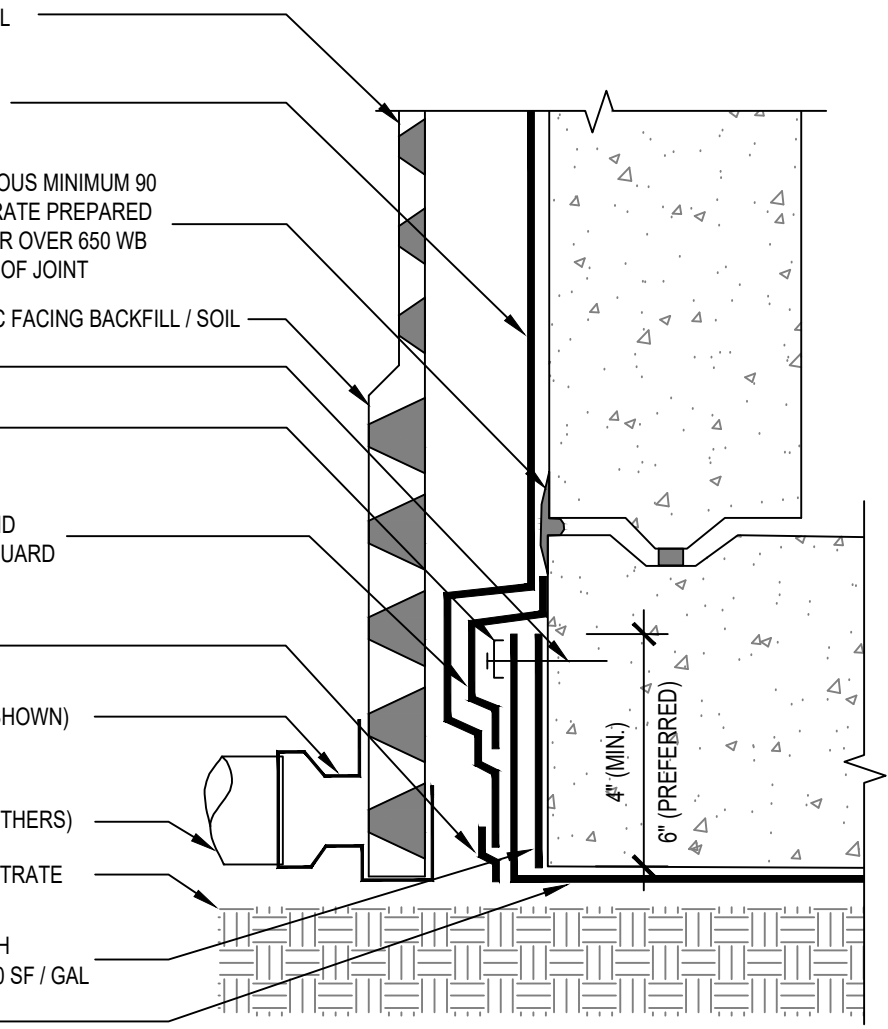
POLYGUARD TOTALFLOW END OUTLET & TEE OUTLET PIPE FITTINGS AVAILABLE (TEE OUTLET SHOWN)

DRAIN PIPE (BY OTHERS)

APPROVED SUBSTRATE

POLYGUARD 606 TAPE APPLIED TO CLEAN, DRY, FROST-FREE, RAW CONCRETE PREPARED WITH POLYGUARD 650 LT LIQUID ADHESIVE OR CALIFORNIA SEALANT APPLIED AT A RATE OF 250 - 300 SF / GAL

POLYGUARD UNDERSLAB TRM WITH FABRIC FACING CONCRETE SLAB POUR



UST8 SECTION @ UNDERSLAB TRM - TIE-IN TO 650 TRM AT FOOTER (PROFILE #1)

Polyguard Products, Inc.
P.O. Box 755 - Ennis, TX 75120
Phone: 214-515-5000
Web Site - www.polyguard.com

GENERAL NOTE: IF ADHESIVE IS REQUIRED FOR SEAMS OR END LAPS, DO NOT USE POLYGUARD 650 WB LIQUID ADHESIVE.

MATERIAL SEPARATED FOR CLARITY
© POLYGUARD PRODUCTS, INC.

The information provided is based on data and knowledge considered to be true and accurate and is offered for the users' consideration, investigation and verification, but we do not warrant the results to be obtained. Please read all data sheets, statements, recommendations or suggestions in conjunction with our conditions of sale, which apply to all goods supplied by us.	NOT TO SCALE
	EFFECTIVE DATE: 12/17/2024
	SUPERCEDES: 12/05/2024