

POLYGUARD MEMBRANE: 650, 650 PRM OR 650 WRM APPLIED TO SUBSTRATE PREPARED WITH POLYGUARD 650 LT LIQUID ADHESIVE OR POLYGUARD CALIFORNIA SEALANT AT A RATE OF 250 - 300 SF/GAL OR POLYGUARD 650 WB LIQUID ADHESIVE AT A RATE OF 350 - 400 SF/GAL

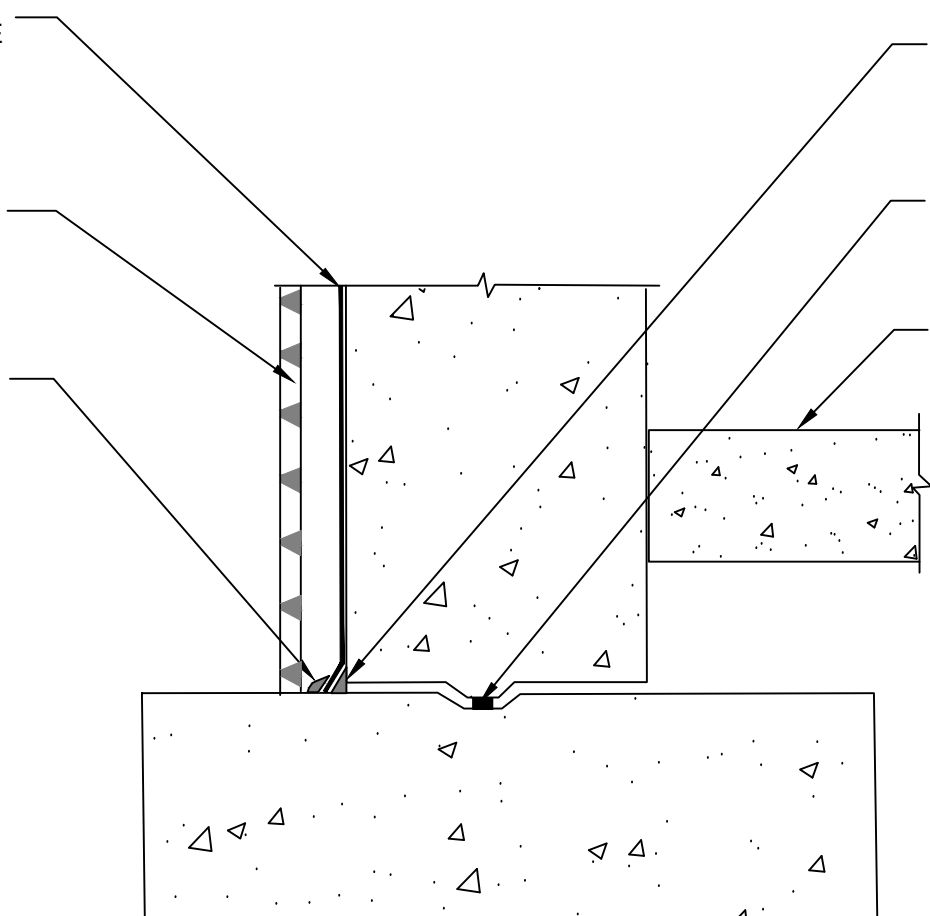
POLYGUARD POLYFLOW 15 /15P SHEET MOLDED DRAIN FABRIC FACING BACKFILL

POLYGUARD DETAIL SEALANT PW OR POLYGUARD LM-95 APPLIED TO TERMINAL EDGE OF MEMBRANE

3/4" FACE OF POLYGUARD DETAIL SEALANT PW OR POLYGUARD LM-95 FILLET /CANT

WATERSTOP PER MANUFACTURES RECOMMENDATION - BY OTHERS

TOP OF INTERIOR FLOOR HEIGHT IS GREATER THAN 12" ABOVE TOP OF FOOTER



WP10

SECTION @ TOP OF INTERIOR FLOOR IS GREATER THAN 12" ABOVE TOP OF FOOTER

Polyguard Products, Inc.
P.O. Box 755 - Ennis, TX 75120
Phone: 214-515-5000
Web Site - www.polyguard.com

SPECIAL NOTE: IF ADHESIVE IS REQUIRED FOR SEAMS OR ENDLAPS DO NOT USE POLYGUARD 650 WB LIQUID ADHESIVE

©POLYGUARD PRODUCTS, INC.
MATERIAL SEPARATED FOR CLARITY

<small>The information provided is based on data and knowledge considered to be true and accurate and is offered for the users' consideration, investigation and verification, but we do not warrant the results to be obtained. Please read all data sheets, statements, recommendations or suggestions in conjunction with our conditions of sale, which apply to all goods supplied by us.</small>	NOT TO SCALE
	EFFECTIVE DATE: 12/16/2024
	SUPERCEDES: 07/15/2024