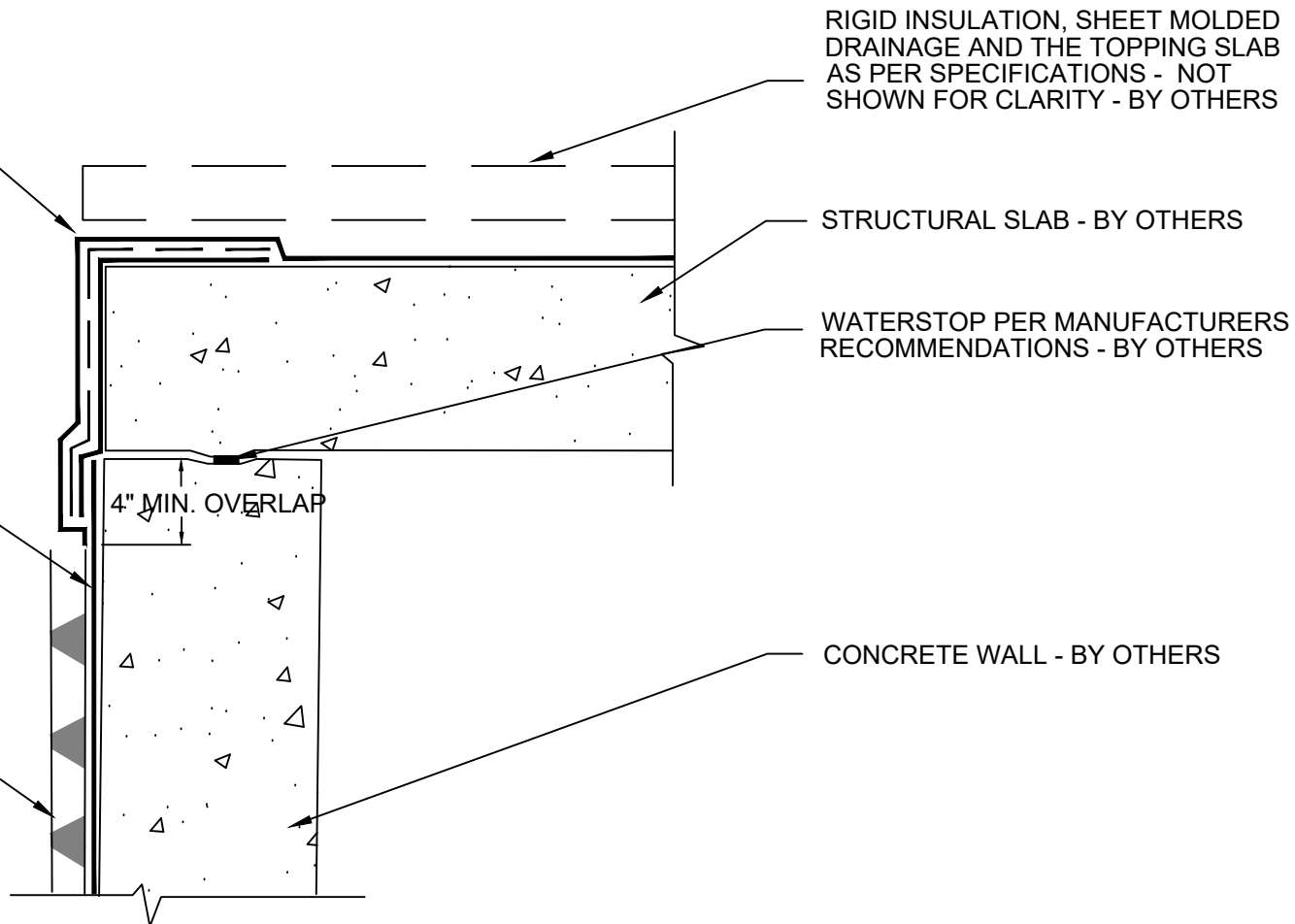


HOT APPLIED RUBBERIZED WATERPROOFING SYSTEM BRUSH ON THE VERTICAL LEG - APPLY NEOPRENE SHEET - COMPLETE HOT APPLICATION PER MANUFACTURES SPECIFICATION - BY OTHERS

POLYGUARD MEMBRANE: 650, 650 PRM OR 650 WRM APPLIED TO SUBSTRATE PREPARED WITH POLYGUARD 650 LT LIQUID ADHESIVE OR POLYGUARD CALIFORNIA SEALANT AT A RATE OF 250 - 300 SF/GAL OR POLYGUARD 650 WB LIQUID ADHESIVE AT A RATE OF 350 TO 400 SF/GAL - REMOVE 4" OF HDPE TO ADHERE THE HOT APPLIED TO THE EXPOSED ASPHALT COMPOUND

POLYGUARD POLYFLOW 15 /15P SHEET MOLDED DRAIN - FABRIC FACING BACKFILL



RIGID INSULATION, SHEET MOLDED DRAINAGE AND THE TOPPING SLAB AS PER SPECIFICATIONS - NOT SHOWN FOR CLARITY - BY OTHERS

STRUCTURAL SLAB - BY OTHERS

WATERSTOP PER MANUFACTURERS RECOMMENDATIONS - BY OTHERS

CONCRETE WALL - BY OTHERS

**WP12**

**SECTION @ HOT APPLIED RUBBER TIE IN TO SELF ADHERED MEMBRANE**

Polyguard Products, Inc.  
P.O. Box 755 - Ennis, TX 75120  
Phone: 214-515-5000  
Web Site - www.polyguard.com

**SPECIAL NOTE: IF ADHESIVE IS REQUIRED FOR SEAMS OR ENDLAPS DO NOT USE POLYGUARD 650 WB LIQUID ADHESIVE**

©POLYGUARD PRODUCTS, INC.  
MATERIAL SEPARATED FOR CLARITY

<small>The information provided is based on data and knowledge considered to be true and accurate and is offered for the users' consideration, investigation and verification, but we do not warrant the results to be obtained. Please read all data sheets, statements, recommendations or suggestions in conjunction with our conditions of sale, which apply to all goods supplied by us.</small>	NOT TO SCALE
	EFFECTIVE DATE: 12/16/2024
	SUPERCEDES: 07/15/2024