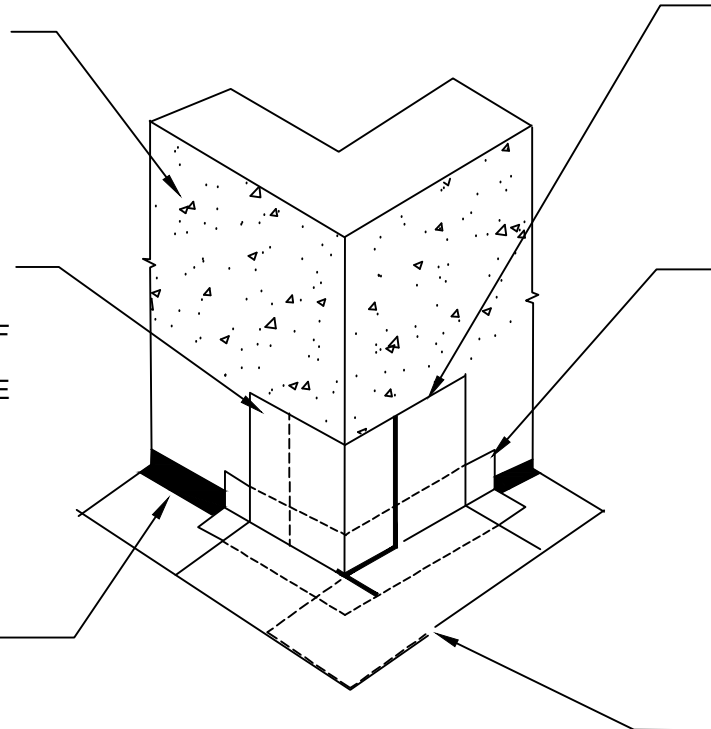


CONCRETE SUBSTRATE - BY OTHERS

PIECE OF POLYGUARD MEMBRANE: 650 OR 650 WRM CUT AND FIT TO OUTSIDE CORNER - APPLIED OVER SUBSTRATE PREPARED WITH POLYGUARD 650 LT LIQUID ADHESIVE OR POLYGUARD CALIFORNIA SEALANT AT A RATE OF 250 - 300 SF/GAL OR POLYGUARD 650 WB LIQUID ADHESIVE AT A RATE OF 350 - 400 SF/GAL

3/4" FILLET OF POLYGUARD DETAIL SEALANT PW OR POLYGUARD LM-95 APPLIED TO INSIDE CORNERS VERTICALLY AND HORIZONTALLY TO RAW CONCRETE - ALLOW POLYGUARD DETAIL SEALANT PW TO CURE FOR 2 HOURS PRIOR TO SHEET APPLICATION



PIECE OF POLYGUARD MEMBRANE: 650 OR 650 WRM CUT AND FIT TO OUTSIDE CORNER - APPLIED OVER SUBSTRATE PREPARED WITH POLYGUARD 650 LT LIQUID ADHESIVE OR POLYGUARD CALIFORNIA SEALANT AT A RATE OF 250 - 300 SF/GAL OR POLYGUARD 650 WB LIQUID ADHESIVE AT A RATE OF 350 - 400 SF/GAL

12" STRIP OF POLYGUARD DETAIL TAPE OR DETAIL TAPE WRM OR CUT PIECE OF POLYGUARD MEMBRANE: 650 OR 650 WRM APPLIED TO INSIDE AND OUTSIDE CORNERS - PREPARE SUBSTRATE WITH POLYGUARD 650 LT LIQUID ADHESIVE OR POLYGUARD CALIFORNIA SEALANT AT A RATE OF 250 - 300 SF/GAL OR POLYGUARD 650 WB LIQUID ADHESIVE AT A RATE OF 350 - 400 SF/GAL

POLYGUARD DETAIL SEALANT PW OR POLYGUARD LM-95 APPLIED TO CUT EDGE AND TERMINATIONS OF POLYGUARD 650 MEMBRANE

WP13

OVERVIEW @ FIELD FORMED SELF ADHERED OUTSIDE CORNER

Polyguard Products, Inc.
P.O. Box 755 - Ennis, TX 75120
Phone: 214-515-5000
Web Site - www.polyguard.com

SPECIAL NOTE: IF ADHESIVE IS REQUIRED FOR SEAMS OR ENDLAPS DO NOT USE POLYGUARD 650 WB LIQUID ADHESIVE

©POLYGUARD PRODUCTS, INC.
MATERIAL SEPARATED FOR CLARITY

<small>The information provided is based on data and knowledge considered to be true and accurate and is offered for the users' consideration, investigation and verification, but we do not warrant the results to be obtained. Please read all data sheets, statements, recommendations or suggestions in conjunction with our conditions of sale, which apply to all goods supplied by us.</small>	NOT TO SCALE
	EFFECTIVE DATE: 12/16/2024
	SUPERCEDES: 07/15/2024