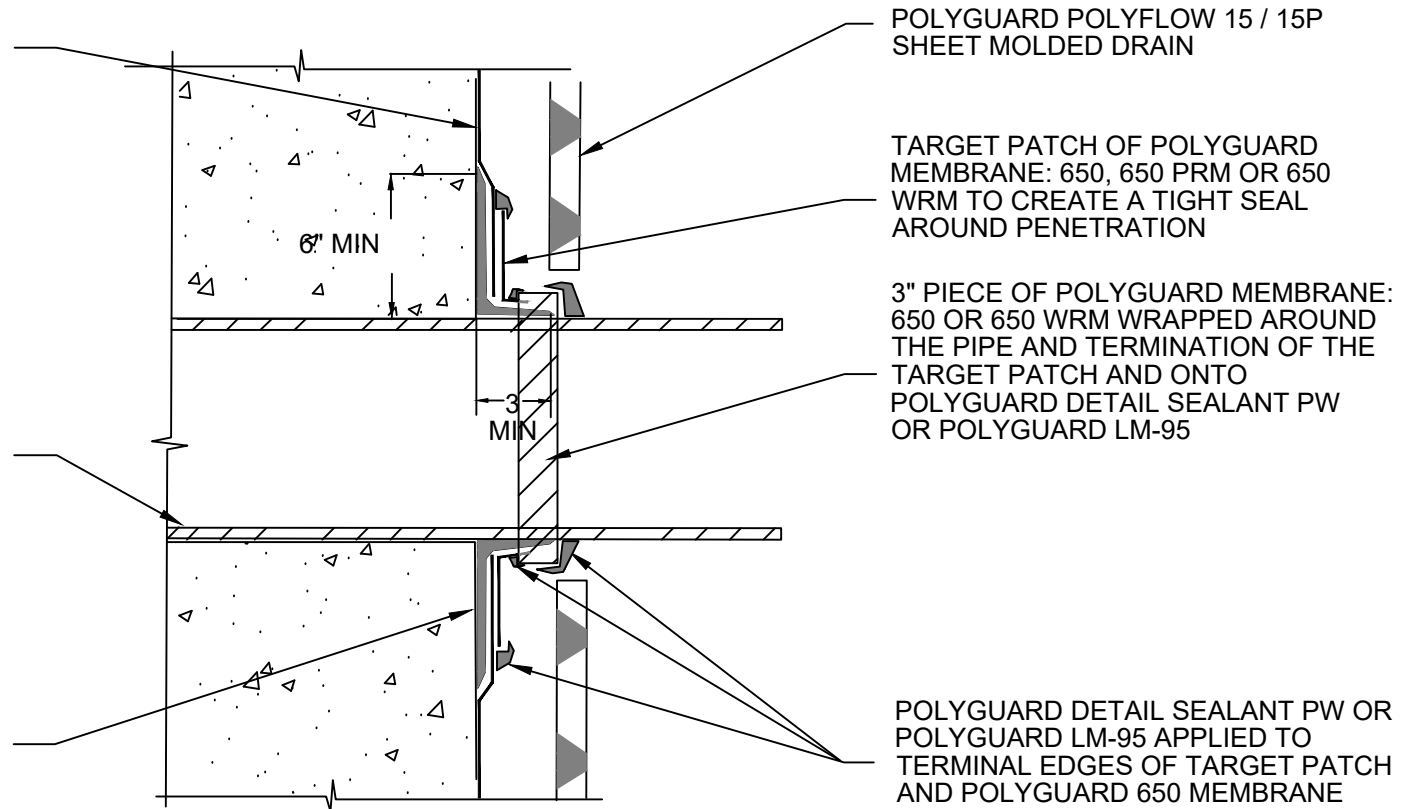


FIELD POLYGUARD MEMBRANE:  
650, 650 PRM OR 650 WRM ROUGH  
FIT AROUND PENETRATION AND  
ONTO SUBSTRATE PREPARED  
WITH POLYGUARD 650 LT LIQUID  
ADHESIVE OR POLYGUARD  
CALIFORNIA SEALANT AT A RATE  
OF 250 - 300 SF/GAL OR  
POLYGUARD 650 WB LIQUID  
ADHESIVE AT A RATE OF 350 - 400  
SF/GAL

SECURED PENETRATION MEMBER  
CLEAN AND ABRASE 3" OF THE  
BASE OF PENETRATION  
SIDEWALLS - APPLY POLYGUARD  
650 LT LIQUID ADHESIVE OR  
POLYGUARD CALIFORNIA SEALANT  
AT A RATE OF 250 -300 SQ/GAL OR  
POLYGUARD 650 WB LIQUID  
ADHESIVE AT A RATE OF 350 - 400  
SF/GAL TO PENETRATION  
SIDEWALL

POLYGUARD DETAIL SEALANT PW  
OR POLYGUARD LM-95 APPLIED 6"  
ONTO RAW CONCRETE AND 3"  
ONTO ABRASED PENETRATION.



POLYGUARD POLYFLOW 15 / 15P  
SHEET MOLDED DRAIN

TARGET PATCH OF POLYGUARD  
MEMBRANE: 650, 650 PRM OR 650  
WRM TO CREATE A TIGHT SEAL  
AROUND PENETRATION

3" PIECE OF POLYGUARD MEMBRANE:  
650 OR 650 WRM WRAPPED AROUND  
THE PIPE AND TERMINATION OF THE  
TARGET PATCH AND ONTO  
POLYGUARD DETAIL SEALANT PW  
OR POLYGUARD LM-95

POLYGUARD DETAIL SEALANT PW OR  
POLYGUARD LM-95 APPLIED TO  
TERMINAL EDGES OF TARGET PATCH  
AND POLYGUARD 650 MEMBRANE

**WP14**

**SECTION @ VERTICAL WALL PENETRATION**

Polyguard Products, Inc.  
P.O. Box 755 - Ennis, TX 75120  
Phone: 214-515-5000  
Web Site - www.polyguard.com

**SPECIAL NOTE: IF ADHESIVE IS REQUIRED FOR  
SEAMS OR ENDLAPS DO NOT USE 650 WB  
LIQUID ADHESIVE**

©POLYGUARD PRODUCTS, INC.  
MATERIAL SEPARATED FOR CLARITY

<small>The information provided is based on data and knowledge considered to be true and accurate and is offered for the users' consideration, investigation and verification, but we do not warrant the results to be obtained. Please read all data sheets, statements, recommendations or suggestions in conjunction with our conditions of sale, which apply to all goods supplied by us.</small>	NOT TO SCALE
	EFFECTIVE DATE: 12/16/2024
	SUPERCEDES: 07/15/2024